



Trajectories of genetics, 150 years after Mendel/Trajectoires de la génétique, 150 ans après Mendel

## The origin and evolution of the sexes: Novel insights from a distant eukaryotic lineage



### *L'origine et l'évolution des sexes : de nouvelles idées à partir d'une lignée eukaryote lointaine*

Laure Mignerot, Susana M. Coelho\*

CNRS, Algal Genetics Group, UMR 8227, Integrative Biology of Marine Models, Sorbonne Universités, UPMC (Université Paris-6, station biologique de Roscoff, place George-Teissier, CS 90074, 29688 Roscoff cedex, France

#### ARTICLE INFO

##### Article history:

Received 5 March 2016

Accepted after revision 14 April 2016

Available online 25 May 2016

##### Keywords:

Evolution

Sex determination

Brown algae

Sex chromosomes

Reproductive system

##### Mots clés :

Évolution

Déterminisme du sexe

Algues brunes

Chromosomes sexuels

Systèmes de reproduction

#### ABSTRACT

Sexual reproduction is an extraordinarily widespread phenomenon that assures the production of new genetic combinations in nearly all eukaryotic lineages. Although the core features of sexual reproduction (meiosis and syngamy) are highly conserved, the control mechanisms that determine whether an individual is male or female are remarkably labile across eukaryotes. In genetically controlled sexual systems, gender is determined by sex chromosomes, which have emerged independently and repeatedly during evolution. Sex chromosomes have been studied in only a handful of classical model organism, and empirical knowledge on the origin and evolution of the sexes is still surprisingly incomplete. With the advent of new generation sequencing, the taxonomic breadth of model systems has been rapidly expanding, bringing new ideas and fresh views on this fundamental aspect of biology. This mini-review provides a quick state of the art of how the remarkable richness of the sexual characteristics of the brown algae is helping to increase our knowledge about the evolution of sex determination.

© 2016 Académie des sciences. Published by Elsevier Masson SAS. This is an open access article under the CC BY-NC-ND license (<http://creativecommons.org/licenses/by-nc-nd/4.0/>).

#### R É S U M É

La reproduction sexuée est un phénomène extrêmement répandu, qui assure la production de nouvelles combinaisons génétiques dans presque toutes les lignées eucaryotes. Bien que les caractéristiques de base de la reproduction sexuée (méiose et syngamie) soient hautement conservées, les mécanismes de contrôle qui déterminent si un individu est mâle ou femelle sont remarquablement labiles chez les eucaryotes. Dans les systèmes sexuels génétiquement contrôlés, le sexe est déterminé par les chromosomes sexuels, qui ont émergé de façon indépendante et à plusieurs reprises au cours de l'évolution. Les chromosomes sexuels ont été étudiés dans seulement une poignée d'organismes modèles classiques, et la connaissance empirique sur l'origine et l'évolution des sexes est encore étonnamment incomplète. Avec l'avènement des nouvelles méthodes de séquençage, la représentativité taxonomique des systèmes modèles s'est rapidement développée,

\* Corresponding author.

E-mail address: [coelho@sb-roscoff.fr](mailto:coelho@sb-roscoff.fr) (S.M. Coelho).

apportant des idées et des points de vue nouveaux sur cet aspect fondamental de la biologie. Cette mini-revue fournit un constat rapide de la façon dont la richesse remarquable des caractéristiques sexuelles des algues brunes contribue à accroître nos connaissances quant à l'évolution des déterminismes du sexe.

© 2016 Académie des sciences. Publié par Elsevier Masson SAS. Cet article est publié en Open Access sous licence CC BY-NC-ND (<http://creativecommons.org/licenses/by-nc-nd/4.0/>).

## 1. Introduction: a myriad of sex determination mechanisms

Sexual reproduction is an extraordinarily widespread phenomenon that assures the production of new genetic combinations in nearly all eukaryotic lineages. Although the core mechanisms of sexual reproduction (meiosis and gamete fusion or syngamy) are highly conserved, the pathways that determine the male and female specificities are remarkably diverse across eukaryotes and appear to have had rapid turnover rates during evolution [1].

Genetic determination of sex is mediated by sex chromosomes, whose key feature is the sex-determining region (SDR) that carries the sex-determining factor(s) and usually does not recombine in the heterogametic sex. The SDR can be as small as a single locus or as large as an entire chromosome. Sex chromosomes are derived from autosomes and have independently evolved many times in different eukaryotic lineages. Sex chromosomes can arise in species with separate sexes in which sex is determined by environmental cues (such as in turtles, where temperature determines the sex of developing embryos) and can also arise in hermaphrodites (that is, individuals with both male and female sex organs). Sex chromosomes are subject to unique evolutionary forces including sex-specific selection, asymmetrical sheltering of deleterious mutations, hemizygoty, or dosage compensation [2]. Besides sex determination, sex chromosomes play a prominent role in several evolutionary processes such as speciation and adaptation [3].

Traditionally, most of our knowledge on the biology and evolution of sex chromosomes stems from a few well-studied model organisms, notably mammals, birds, *Drosophila* and the plant *Silene latifolia*. Animals and plants, however, represent just two out of the 21 major groups of Eukaryotes (Fig. 1A) and the universality of the mechanisms driving the evolution of the sexes is difficult to assess without a broader view that takes into account the scope of the tree of life. In this context, the brown algae, a group of complex multicellular eukaryotes, are extraordinary comparative models to look at how the sexes have originated and evolved in a lineage that has been independently evolving from animals and plants for more than a billion years.

Moreover, while studies so far have focused on diploid sex determination systems (the classical XY or ZW systems, Fig. 1B), haploid phase sex-determination systems (UV systems such as those of mosses and algae) [4] have been less studied. Contrasting the properties of XY/ZW and UV chromosomes, together with comparisons with

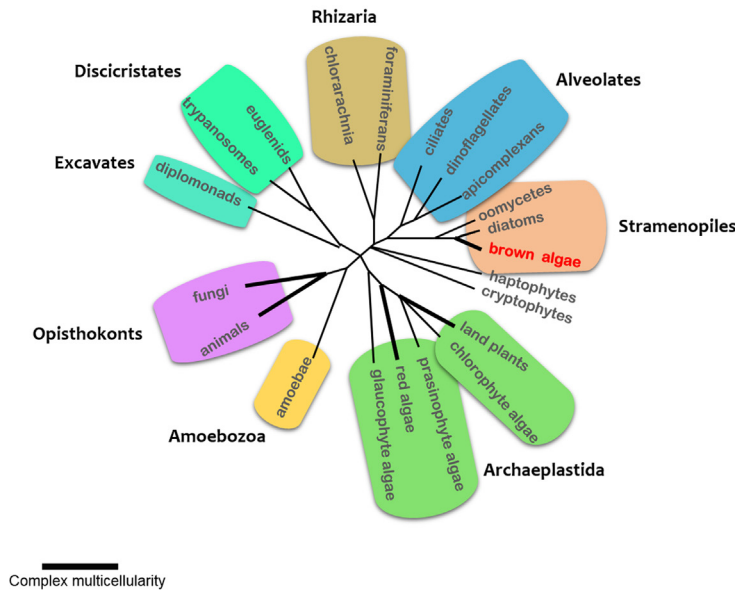
species that lack sex chromosomes entirely, provides an outstanding chance to assess the relative importance of the forces driving the evolution of each system.

## 2. Evolution of sex chromosomes: new insights from UV systems

In recent years, comparative studies of sex chromosomes of different ages from both animals and plants have led to the emergence of a model for the evolution of sex chromosomes [5]. A typical sex chromosome pair derives from a pair of autosomes through the acquisition of genes involved in sex determination. If more than one locus involved in sex determination is located on the chromosome, recombination between loci is suppressed, leading to the establishment of a non-recombining region on the nascent sex chromosome, the sex-determining region or SDR. The formation of this non-recombining region has important consequences for the evolution of this part of the genome: repetitive DNA tends to accumulate, leading to an increase in SDR size and degeneration of genes within the non-recombining region. At a later stage, deletion of non-functional DNA from within the SDR may lead to a decrease in the physical size of the SDR. The evolutionary processes driving the expansion of the SDRs (and corresponding shrinkage of the pseudoautosomal region, PAR) have been the subject of research, mostly theoretical, for many years and the currently accepted view is that this process is driven by the recruitment of genes with differential selective benefits for the two sexes (sexually antagonistic genes) into the SDR [6], to resolve sexual conflicts.

The evolution of sex chromosomes is largely impacted by the genetic mechanism of sex determination. In organisms where sex is expressed in the diploid phase, such as most animals and land plants, one sex is heterogametic (XY or ZW) whilst the other is homogametic (XX or ZZ). In these systems only the Y or W contain non-recombining regions because the X and Z recombine in the homogametic sex. In contrast, in some algae and bryophytes the male and female sexes are genetically determined after meiosis, during the haploid phase of the life cycle (Fig. 1B). This type of UV sexual system exhibits specific evolutionary and genetic properties that have no exact equivalent in diploid systems. A number of verbal predictions regarding UV evolution had been formulated, but they have long lacked empirical support. The U and the V have been predicted to show similar characteristics because they function in different individuals and both are non-recombining; furthermore, degeneration should be

A. Simplified Eukaryotic tree of life.



B. Diversity of types of sexual systems (XY, ZW and UV).

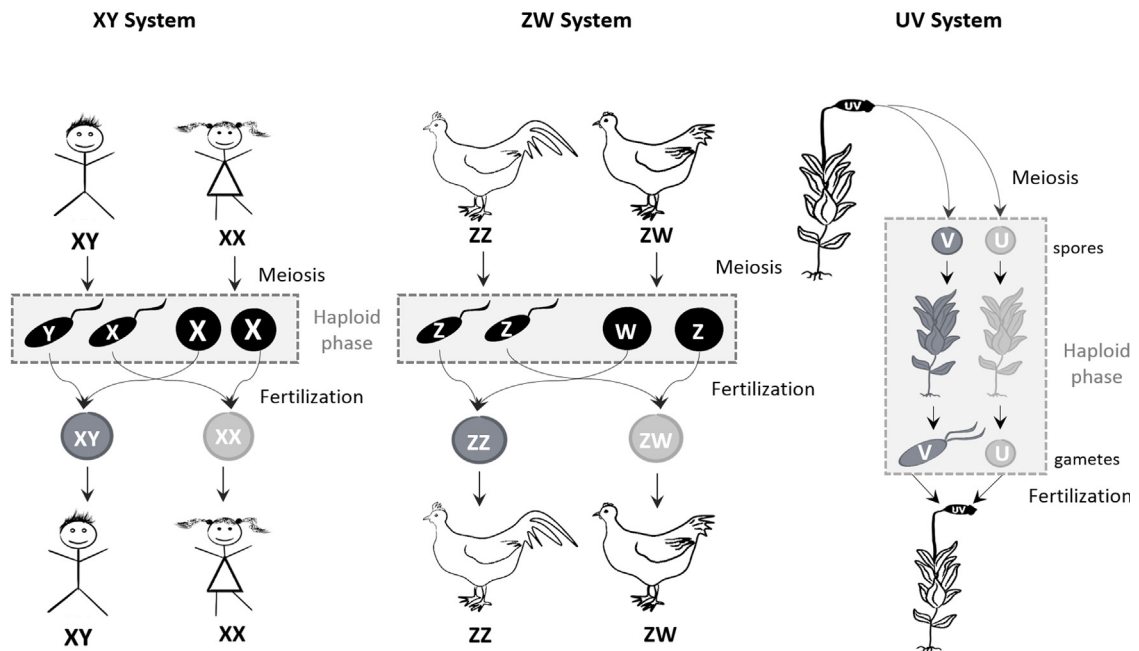


Fig. 1. A. Simplified Eukaryotic tree of life, adapted from [24]. B. Diversity of types of sexual systems (XY, ZW and UV). In organisms with diploid life cycles, sex is determined in the diploid phase of the life cycle, after fertilization. In XY systems, the sex of the embryo depends on the chromosome carried by the sperm cell, X or Y. In ZW it is the female egg that determines the sex of the individual. In organisms such as some algae and mosses, that alternate between gametophyte and sporophyte generations (haploid-diploid life cycles), sex is expressed during the haploid (gametophyte) phase of the life cycle. The sexual system in this case is called UV systems. In contrast to XY and ZW systems, sex in UV systems depends on whether the spores receive a U or a V chromosome after meiosis (not at the fertilisation stage).

modest because purifying selection is expected to act on the *SDR* genes during the haploid phase of the life cycle, and the U and V are expected to experience mainly gene gain [7].

Recent work using the model brown alga *Ectocarpus* (Box 1) has made an important contribution to the empirical validation of predictions in relation to sex chromosomes. The *Ectocarpus* UV system displays some

**Box 1.** *Ectocarpus*, a model organism for the brown algae

The development of *Ectocarpus* (Fig. 2), a small filamentous brown alga (A), as a model brown alga was closely linked to an international effort to sequence the complete male genome of this alga [19] and, more recently, two female *Ectocarpus* strains [8] that, together, have allowed the identification of the U and V sex chromosomes [8]. The advantage of such a model lies in having a haploid-diploid life cycle, which involves alternation between two independent multicellular generations: the haploid gametophyte and the diploid sporophyte. Sex of gametophytes depends on whether they receive a U or a V chromosome after meiosis. Male and female gametes are produced by mitosis in specialised cells on the gametophyte called plurilocular sporangia (B). Further tools currently existing for this model organism include a large EST collection, whole genome tiling arrays, deep sequencing of mRNAs during several stages of the life cycle, small and miRNAs, a genetic map, stramenopile-adapted bioinformatic tools and proteomics and metabolomics methodologies [19–22]. A number of genetic tools have also been developed, including protocols for mutagenesis, phenotypic screening methods, genetic crosses, methods for handling large populations, a large number of genetic markers and defined strains for genetic mapping and a TILLING mutant collection [20,23]. To date, more than 4400 *Ectocarpus* mutant lines have been generated for this resource. A large *Ectocarpus* strain collection (over 2500 strains, not including large segregating populations obtained in laboratory) has been established in Roscoff (Behzin Rosko), and this collection is currently being integrated in the Roscoff Culture Collection making it therefore available for the scientific community. This collection includes strains from all around the world and represents an important resource for studying genetic variation within the genus.

striking similarities with XY and ZW systems, such as low gene density and accumulation of repeated DNA in the non-recombining, sex-determining region. This highlights the universality of some of the processes shaping sex chromosome evolution across distant lineages. The *Ectocarpus* system has, however, had a distinct evolutionary trajectory. Remarkably, although this UV system is very old (> 100 Myr), the SDR has remained small [8,9]. A possible explanation for this feature was suggested by the low number of sex-biased genes, implying that sexual conflict in *Ectocarpus* may be insufficient to drive extensive SDR expansion [8,10]. This result is therefore consistent with the view that sex antagonism may drive SDR expansion. Surprisingly, both the male and female SDR haplotypes showed signs of degeneration despite the action of purifying selection during the haploid phase of the life cycle, which is expected to purge mildly deleterious mutations and therefore prevent degeneration.

Taken together, we can say that studies using the SDR of “exotic” organisms have increased our knowledge on the evolutionary trajectory of UV systems, and have provided, and will certainly continue to provide, a broader

phylogenetic dimension to sex chromosome evolutionary models.

While the genomic and evolutionary characteristics of the sex-specific regions are increasingly well understood, the recombining regions (the ‘pseudoautosomal region’ or PAR) of the sex chromosomes have been less studied. The PARs are expected to behave like autosomes and recombine during meiosis; therefore genes in this region are inherited in an autosomal rather than a strictly sex-linked fashion. Genomic-scale analyses have been carried out for the PARs of a less than a handful of old XY or ZW sexual systems [11]. Recent work using the well assembled PAR of the UV system of *Ectocarpus* showed that although PARs recombine at a rate that is not different from any other region of its genome, this region exhibits a number of structural and evolutionary features that are typically associated with regions of suppressed recombination [10]. The PAR of this UV system has accumulated genes that are differentially expressed during the sporophyte versus gametophyte generation of the life cycle, compared to the rest of the genome, and these generation-specific genes exhibited clear signs of accelerated evolution. Generation-antagonistic forces may therefore affect the evolution of the PARs [10]. This, and the work described above on the sex-determining region of the *Ectocarpus* UV sex chromosomes, has brought to light the critical impact of the life history of the organisms, in particular the type of life cycles, in the evolution of sex chromosomes.

### 3. Beyond *Ectocarpus*: brown algae as models to understand the origin and evolution of sexual systems

In this context, the brown algae are emerging as interesting models for investigating the origins and evolution of sex chromosomes because they exhibit a bewildering variety of life history traits, e.g. reproductive systems, types of life cycle and sex chromosome systems in a single group, and there appears to have been considerable switching between variants of these different features on an evolutionary timescale. The maintenance of this range of variability in a single group is actually quite unique among the eukaryotes, and clearly points to a complex evolutionary history of the underlying sex-determination systems.

The brown algae represent a unique group for studies of the evolution of the sexes, particularly with regard to the evolution of gamete size sexual dimorphism as this group exhibits a high level of variability for this trait, ranging from isogamous, through anisogamous, to oogamous systems [12]. Anisogamy has evolved several times in this group and somewhat surprisingly, oogamy seems to be the ancestral state in brown algae [13]. This opens the intriguing possibility that oogamy may evolve towards isogamy, despite the fact that transitions from oogamy towards isogamy are difficult to explain from a theoretical point of view [14]. The diversity of levels of gamete dimorphism and the multiple transitions between gamy levels within the brown algae are highly interesting in the context of recent views on the evolution of gamete size dimorphism and its consequences for the evolution of the SDRs. Evidence has been reported for linkage between

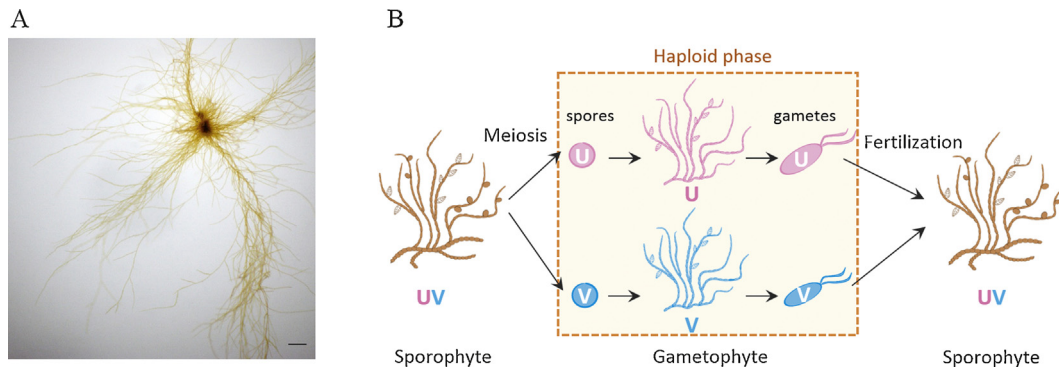


Fig. 2. A. *Ectocarpus* gametophyte. B. The haploid-diploid life cycle of *Ectocarpus*.

the mating type (MT) locus and a gene(s) controlling gamete size in the green alga *Chlamydomonas*, and it has been suggested that the MT locus in a related oogamous species underwent significant expansion correlated with the evolution of gamete size sexual dimorphism [15]. Yet, the molecular basis of gamete size control and its link to sex determination remains unclear. The brown algae, thus, may represent great comparative systems to complement work done in the green lineage.

Differences in gamete size in anisogamous and oogamous brown algal species may influence other reproductive characteristics. In particular, gamete size may be one of the factors that determine whether a gamete is capable of undergoing asexual reproduction through parthenogenesis should it fail to encounter a gamete of the opposite sex. In isogamous, anisogamous and oogamous brown algal species there are marked differences between the relative parthenogenetic capacities of male and female gametes [13,16]. A trend is apparent: usually both male and female gametes of isogamous brown algal species are capable of parthenogenesis whereas only the female gametes of anisogamous species are parthenogenetic (i.e. in the latter parthenogenesis is a sexually dimorphic trait). Neither the male nor the female gametes undergo parthenogenesis in oogamous species. Overall, these tendencies suggest that gamete size may influence parthenogenetic capacity up to a point, but that in oogamous species the large female gamete is specialised for zygote production and is no longer capable of initiating parthenogenetic development [12].

The brown algae are the Eukaryotic lineage that exhibits the broadest diversity of types of life cycle and a widest range of different sexual systems. For example, sexuality is expressed during the diploid phase of the life cycle in brown algae with diploid life cycles (dioecy) such as the fucoids, whereas it is the haploid gametophyte generation that exhibits sexuality (dioecy) in algae such as *Ectocarpus* that have haploid-diploid life cycles [12]. The selective pressures leading to the evolution of these different systems are distinct: whilst dioecy might evolve from monoecy to limit inbreeding (due, in the latter, to the fertilisation of female gametes by male gametes produced by the same organism), this is unlikely to be the case for

dioecy because deleterious mutations should be efficiently purged during the extensive haploid phase of the life cycle. Similarly, genetic sex determination is expected to operate differently, with XY or ZW systems occurring in dioecious species but UV systems occurring in dioicous species. When the different types of brown algal life cycle are mapped onto a phylogenetic tree, the distribution pattern suggests that there has been considerable switching between different life cycle strategies and sex chromosome systems during the evolution of this group [13,16], and that dioecy was the ancestral state in the brown algae, and the transition to dioecy presumably required an intermediate state of co-sexuality (e.g., monoecy) with epigenetic sex differentiation (as opposed to genetic sex determination). Phylogenetic comparative methods will be valuable to fully characterise and reveal correlations between these life cycle and reproductive traits and their relationships with the evolution of sex chromosomes across the brown algal lineage.

#### 4. Master sex-determining genes across lineages

Sex chromosomes harbour the master-switch gene that determines gender. A few master sex determination genes have been identified across the eukaryotes [17]. The transcription factor DMRT1 is involved in sex determination in deeply divergent taxa such as *Drosophila*, *C. elegans*, medaka fish and frogs. High-mobility group (HMG)-domain proteins have been implicated in gender determination in both vertebrates and fungi, and the mating type (MT) locus of the green alga *Volvox* also contains a HMG-domain gene [18]. Remarkably, a HMG-domain gene has been identified in the SDR of *Ectocarpus* and this gene represents therefore a strong candidate for the sex-determining gene in this species. If this gene acts as the master sex determination gene in *Ectocarpus*, which is very distantly related to previously identified species with HMG sex-determining genes (more than a billion years of independent evolutionary history), this will raise very important questions about the evolution of sex-determination gene networks across the Eukaryotes, suggesting shared or convergent mechanisms in brown algae, fungi and animals.



## Disclosure of interest

The authors declare that they have no competing interest.

## Acknowledgements

Work in the Algal Genetics group is supported by the CNRS, the ANR (project Bi-cycle ANR-10-BLAN-1727 and project Idealg ANR-10-BTBR-04-01), the Interreg program France (Channel)-England (project Marinexus), the UPMC and the European Research Council (grant agreement 638240). LM had a PhD grant (ARED) from the Région Bretagne.

## References

- [1] L.W. Beukeboom, N. Perrin, The evolution of sex determination, n.d.
- [2] B. Charlesworth, D. Charlesworth, The degeneration of Y chromosomes, *Philos. Trans. R. Soc. B Biol. Sci.* 355 (2000) 1563–1572.
- [3] D.C. Presgraves, Sex chromosomes and speciation in *Drosophila*, *Trends Genet.* 24 (2008) 336, <http://dx.doi.org/10.1016/j.tig.2008.04.007>.
- [4] D. Bachtrog, M. Kirkpatrick, J.E. Mank, S.F. McDaniel, J.C. Pires, W. Rice, et al., Are all sex chromosomes created equal? *Trends Genet.* 27 (2011) 350–357, <http://dx.doi.org/10.1016/j.tig.2011.05.005>.
- [5] D. Bachtrog, J.E. Mank, C.L. Peichel, M. Kirkpatrick, S.P. Otto, T.-L. Ashman, et al., Sex determination: why so many ways of doing it? *PLOS Biol.* 12 (2014) e1001899, <http://dx.doi.org/10.1371/journal.pbio.1001899>.
- [6] C.Y. Jordan, D. Charlesworth, The potential for sexually antagonistic polymorphism in different genome regions, *Evol. Int. J. Org. Evol.* 66 (2012) 505–516, <http://dx.doi.org/10.1111/j.1558-5646.2011.01448.x>.
- [7] J.J. Bull, *Evolution of sex determining mechanisms*, Benjamin/Cummings Pub. Co, 1983.
- [8] S. Ahmed, J.M. Cock, E. Pessia, R. Luthringer, A. Cormier, M. Robuchon, et al., A haploid system of sex determination in the brown Alga *Ectocarpus* sp., *Curr. Biol.* 24 (2014) 1945–1957, <http://dx.doi.org/10.1016/j.cub.2014.07.042>.
- [9] A. Lipinska, A. Cormier, R. Luthringer, A.F. Peters, E. Corre, C.M.M. Gachon, et al., Sexual dimorphism and the evolution of sex-biased gene expression in the brown alga *ectocarpus*, *Mol. Biol. Evol.* 32 (2015) 1581–1597, <http://dx.doi.org/10.1093/molbev/msv049>.
- [10] R. Luthringer, A.P. Lipinska, D. Roze, A. Cormier, N. Macaisne, A.F. Peters, et al., The pseudoautosomal regions of the U/V sex chromosomes of the brown Alga *Ectocarpus* exhibit unusual features, *Mol. Biol. Evol.* 32 (2015) 2973–2985, <http://dx.doi.org/10.1093/molbev/msv173>.
- [11] L. Smeds, T. Kawakami, R. Burri, P. Bolivar, A. Husby, A. Qvarnström, et al., Genomic identification and characterization of the pseudoautosomal region in highly differentiated avian sex chromosomes, *Nat. Commun.* 5 (2014) 5448, <http://dx.doi.org/10.1038/ncomms6448>.
- [12] R. Luthringer, A. Cormier, S. Ahmed, A.F. Peters, J.M. Cock, S.M. Coelho, Sexual dimorphism in the brown algae, *Perspect. Phycol.* 1 (2014) 11–25, <http://dx.doi.org/10.1127/2198-011X/2014/0002>.
- [13] T. Silberfeld, J.W. Leigh, H. Verbruggen, C. Cruaud, B. de Reviers, F. Rousseau, A multi-locus time-calibrated phylogeny of the brown algae (Heterokonta, Ochrophyta, Phaeophyceae): investigating the evolutionary nature of the “brown algal crown radiation”, *Mol. Phylogenet.*

- Evol.* 56 (2010) 659–674, <http://dx.doi.org/10.1016/j.ympcv.2010.04.020>.
- [14] T. Togashi, J.L. Bartelt, J. Yoshimura, K. Tainaka, P.A. Cox, Evolutionary trajectories explain the diversified evolution of isogamy and anisogamy in marine green algae, *Proc. Natl. Acad. Sci. USA* 109 (2012) 13692–13697, <http://dx.doi.org/10.1073/pnas.1203495109>.
- [15] P.J. Ferris, E.V. Armbrust, U.W. Goodenough, Genetic structure of the mating-type locus of *Chlamydomonas reinhardtii*, *Genetics* 160 (2002) 181–200.
- [16] J.M. Cock, O. Godfroy, N. Macaisne, A.F. Peters, S.M. Coelho, Evolution and regulation of complex life cycles: a brown algal perspective, *Curr. Opin. Plant Biol.* 17 (2014) 1–6, <http://dx.doi.org/10.1016/j.pbi.2013.09.004>.
- [17] A. Herpin, M. Scharf, Plasticity of gene-regulatory networks controlling sex determination: of masters, slaves, usual suspects, newcomers, and usurpaters, *EMBO Rep.* 16 (2015) 1260–1274, <http://dx.doi.org/10.15252/embr.201540667>.
- [18] P. Ferris, B.J.S.C. Olson, P.L. De Hoff, S. Douglass, D. Casero, S. Prochnik, et al., Evolution of an expanded sex-determining locus in *Volvox*, *Science* 328 (2010) 351–354, <http://dx.doi.org/10.1126/science.1186222>.
- [19] J.M. Cock, L. Sterck, P. Rouzé, D. Scornet, A.E. Allen, G. Amoutzias, et al., The *Ectocarpus* genome and the independent evolution of multicellularity in brown algae, *Nature* 465 (2010) 617–621, <http://dx.doi.org/10.1038/nature09016>.
- [20] O. Godfroy, A.F. Peters, S.M. Coelho, J.M. Cock, Genome-wide comparison of ultraviolet and ethyl methanesulphonate mutagenesis methods for the brown alga *Ectocarpus*, *Mar. Genomics* 24 (Pt 1) (2015) 109–113, <http://dx.doi.org/10.1016/j.margen.2015.03.007>.
- [21] S. Heesch, G.Y. Cho, A.F. Peters, G. Le Corguillé, C. Falentin, G. Boutet, et al., A sequence-tagged genetic map for the brown alga *Ectocarpus siliculosus* provides large-scale assembly of the genome sequence, *New Phytol.* 188 (2010) 42–51, <http://dx.doi.org/10.1111/j.1469-8137.2010.03273.x>.
- [22] J.E. Tarver, A. Cormier, N. Pinzón, R.S. Taylor, W. Carré, M. Strittmatter, et al., microRNAs and the evolution of complex multicellularity: identification of a large, diverse complement of microRNAs in the brown alga *Ectocarpus*, *Nucleic Acids Res.* (2015) gkv578, <http://dx.doi.org/10.1093/nar/gkv578>.
- [23] S.M. Coelho, D. Scornet, S. Rousvoal, N. Peters, L. Dartevelle, A.F. Peters, et al., Genetic crosses between *Ectocarpus* strains, *Cold Spring Harb. Protoc.* 2012 (2012) 262–265, <http://dx.doi.org/10.1101/pdb.prot067942>.
- [24] J.M. Cock, S.M. Coelho, Algal models in plant biology, *J. Exp. Bot.* 62 (2011) 2425–2430, <http://dx.doi.org/10.1093/jxb/err117>.

## Glossary

- Isogamy*: production of gametes of opposite sexes morphologically similar in terms of shape and size
- Anisogamy*: production of gametes of different size and/or form, usually the female gamete being larger than the male gamete
- Oogamy*: a form of anisogamy that involves the production of a small motile male gamete and a large non-motile female gamete
- Gametophyte*: the gamete-producing generation of a plant life cycle
- Sporophyte*: the spore-producing generation of a plant life cycle
- Monoicous and monoecious*: refers to species that have both male and female organs in the same individual
- Dioicous and dioecious*: refers to species where there is distinct male and female individual organism. The term “monoicous” and “dioicous” are used to describe organisms where the sex is expressed during the gametophyte generation whereas the terms “monoecious” and “dioecious” are used for organisms where the sex is expressed during the sporophyte generation.
- Heterogametic sex*: the sex that carries two different sex chromosomes (male, in XY systems, and female in the case of ZW systems)