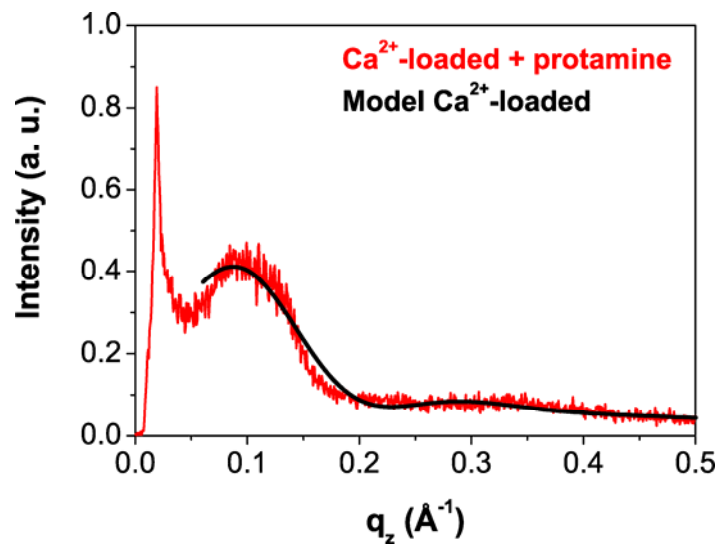


Supporting Information 2 (Oliveira et al.)



GIXOS curve and the reconstructed electron density profile of the LPS Ra monolayer on Ca²⁺-loaded buffer after the protamine injection (green). The measured curve can be well represented with the best-fit result of the same monolayer without protamine (black), indicating that protamine molecules entering the Ca²⁺-enriched region is too small to alter the electron density profile.