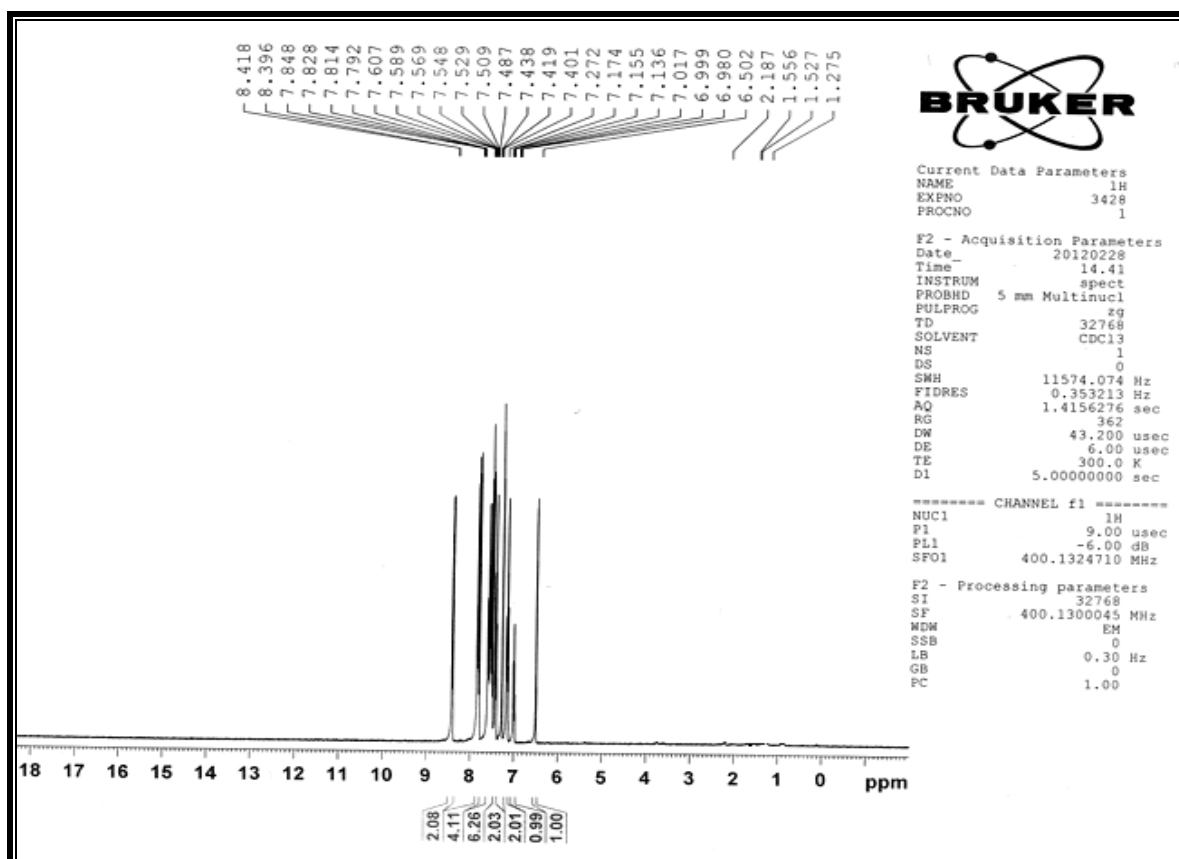
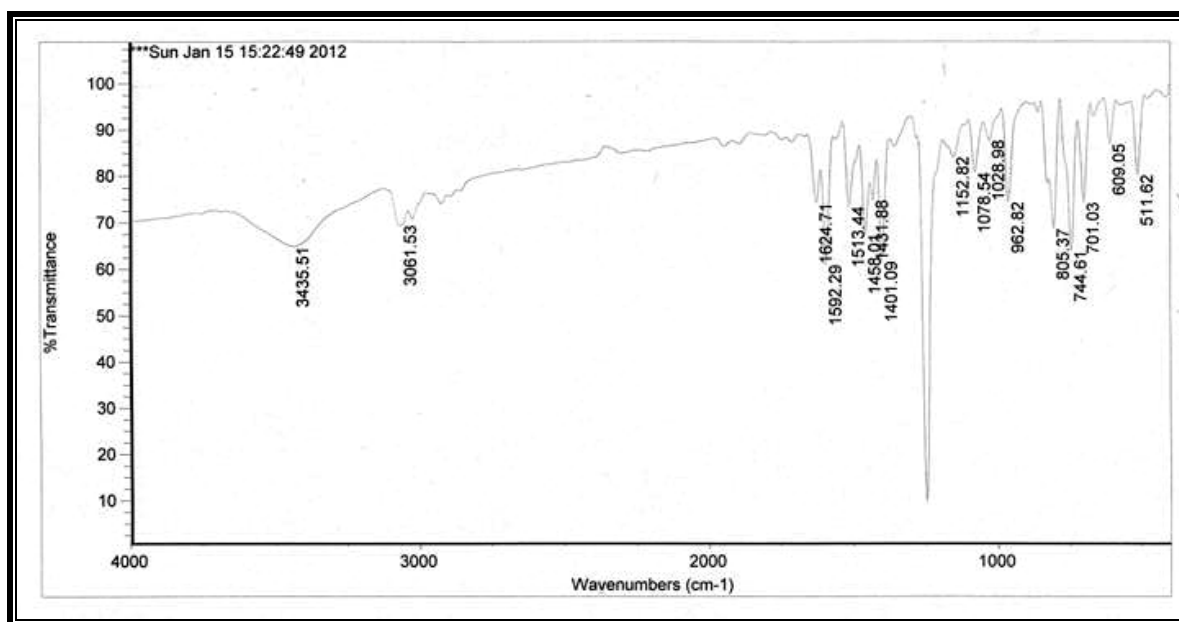
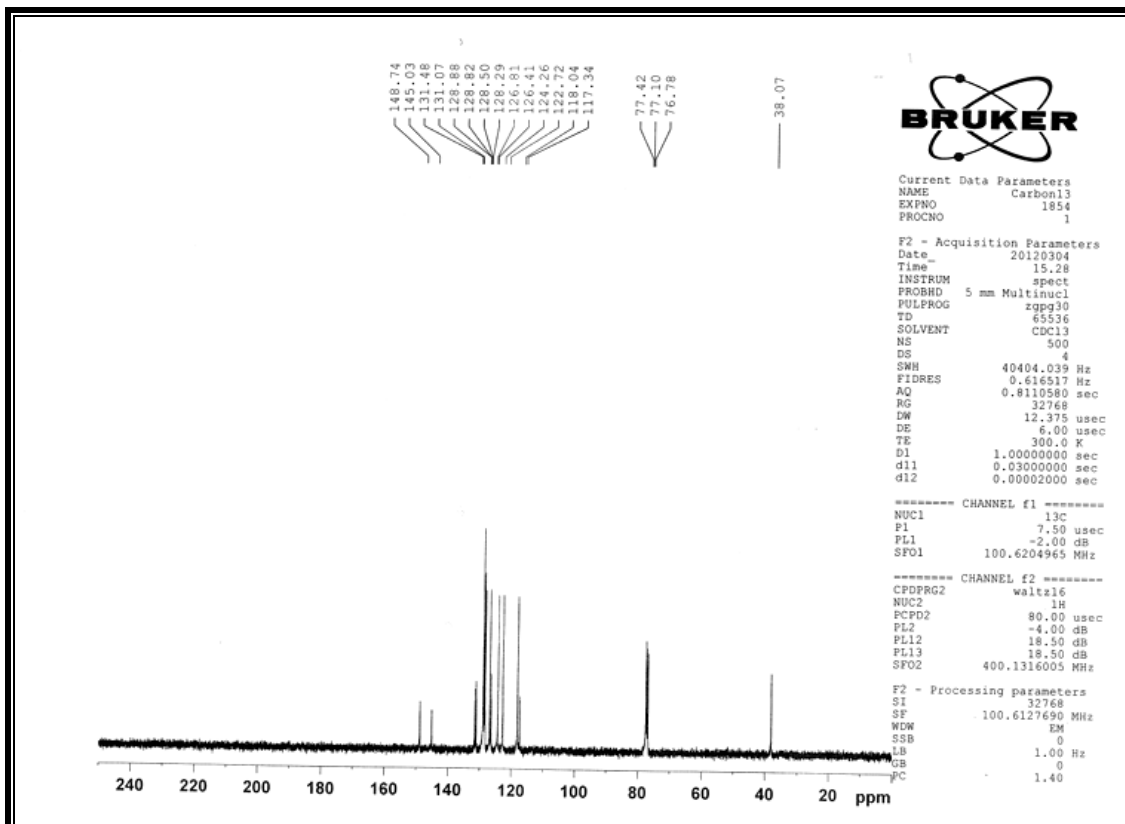
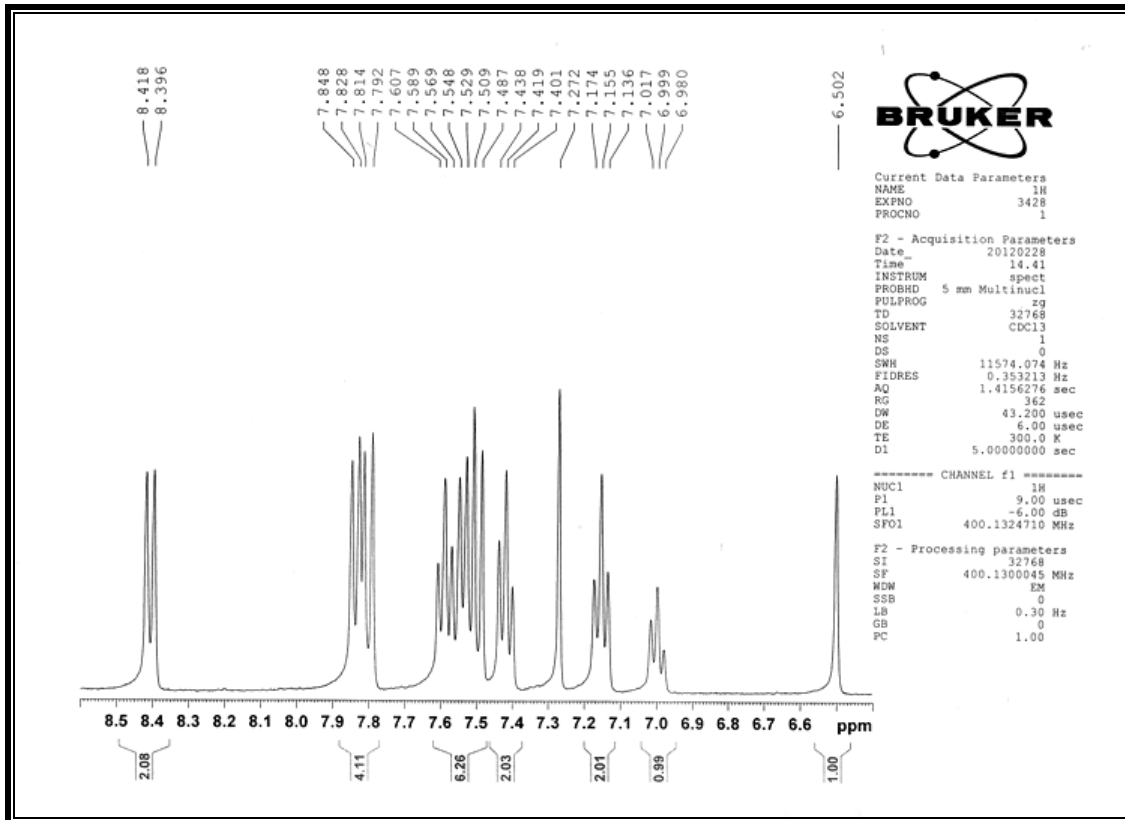
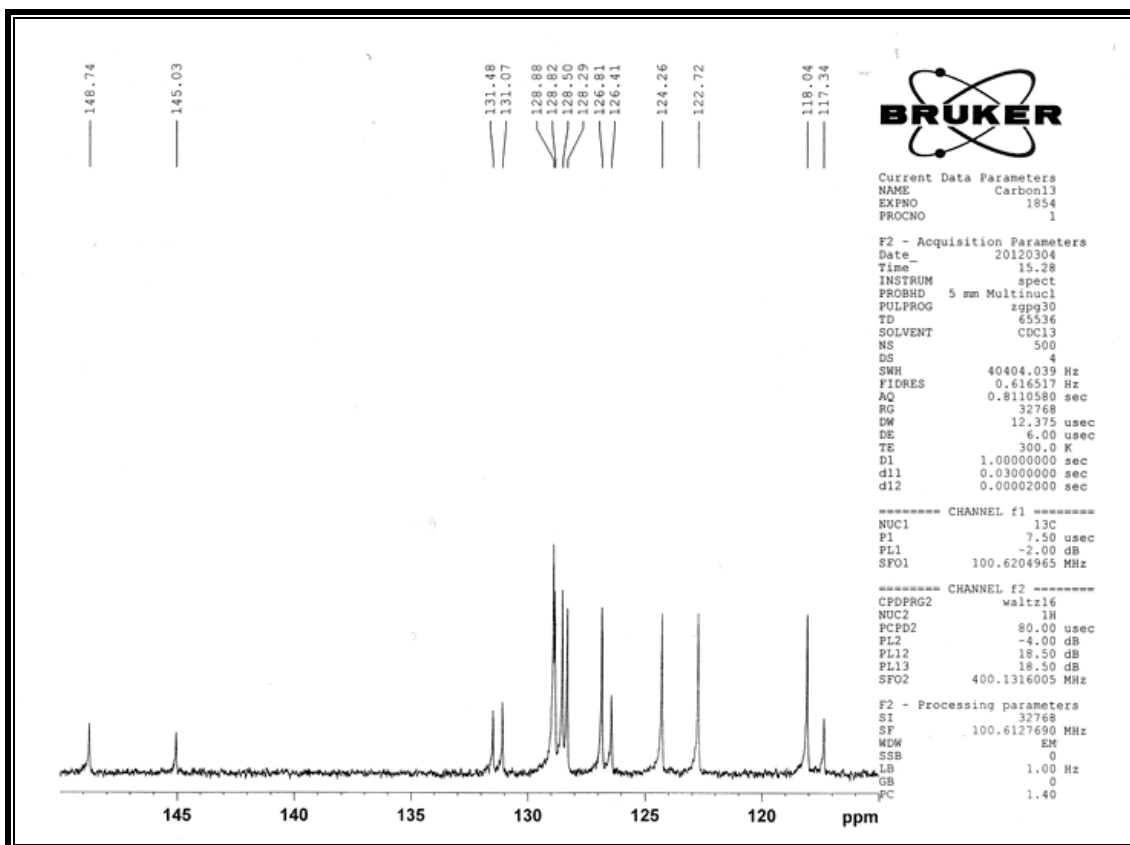


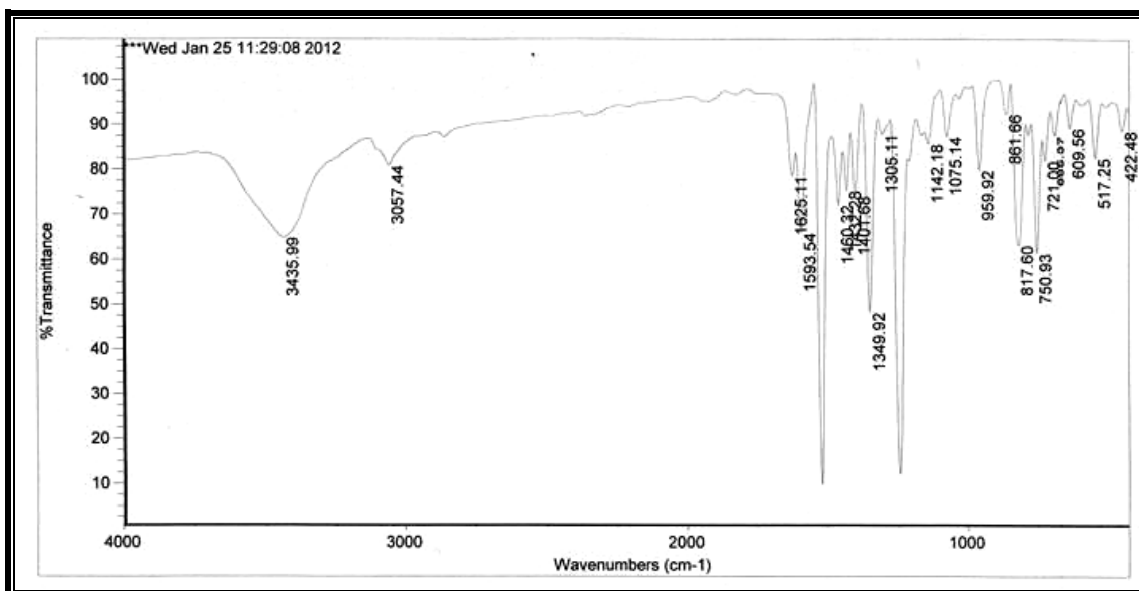
14-(phenyl)14H-dibenzo[a,j]xanthene:

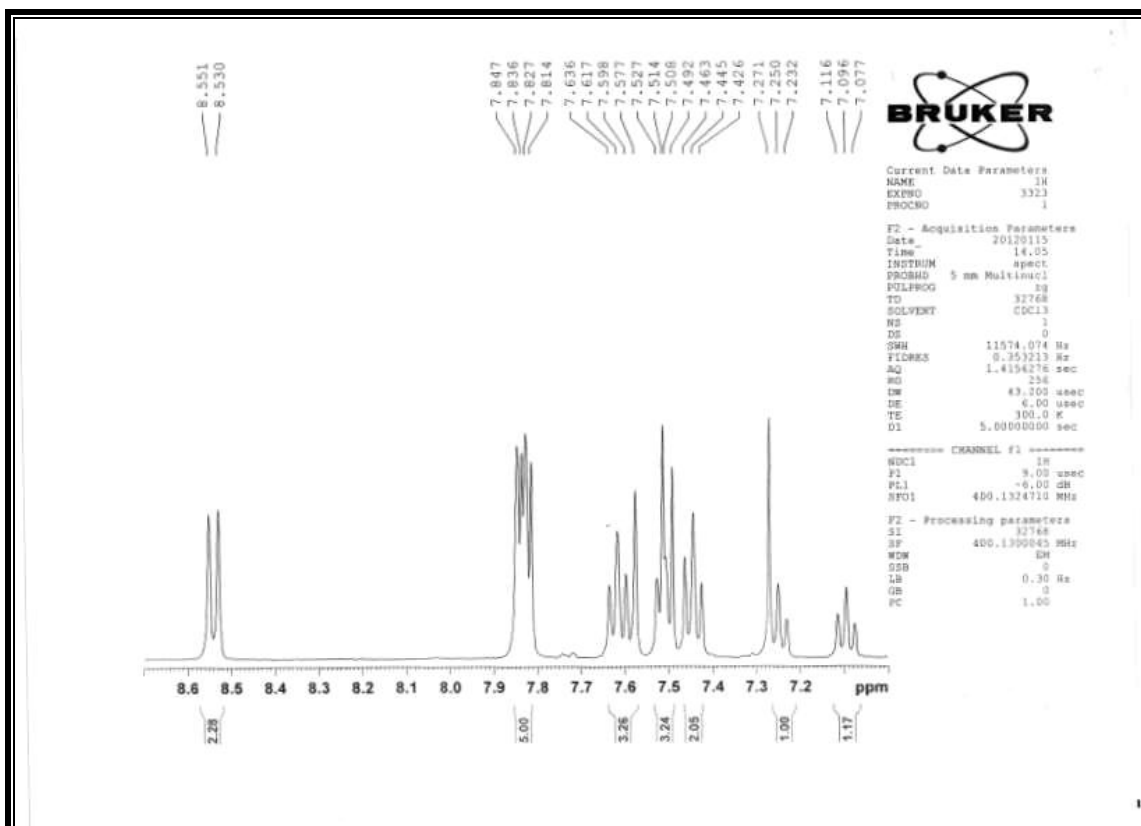
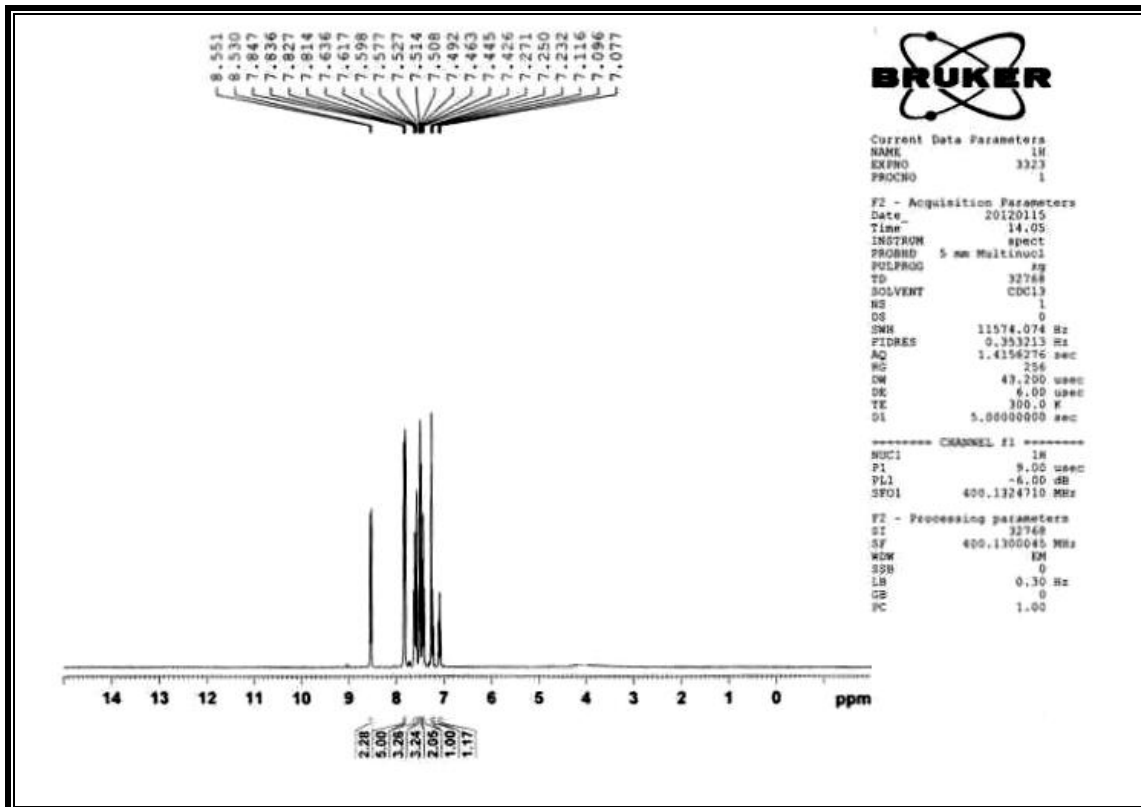




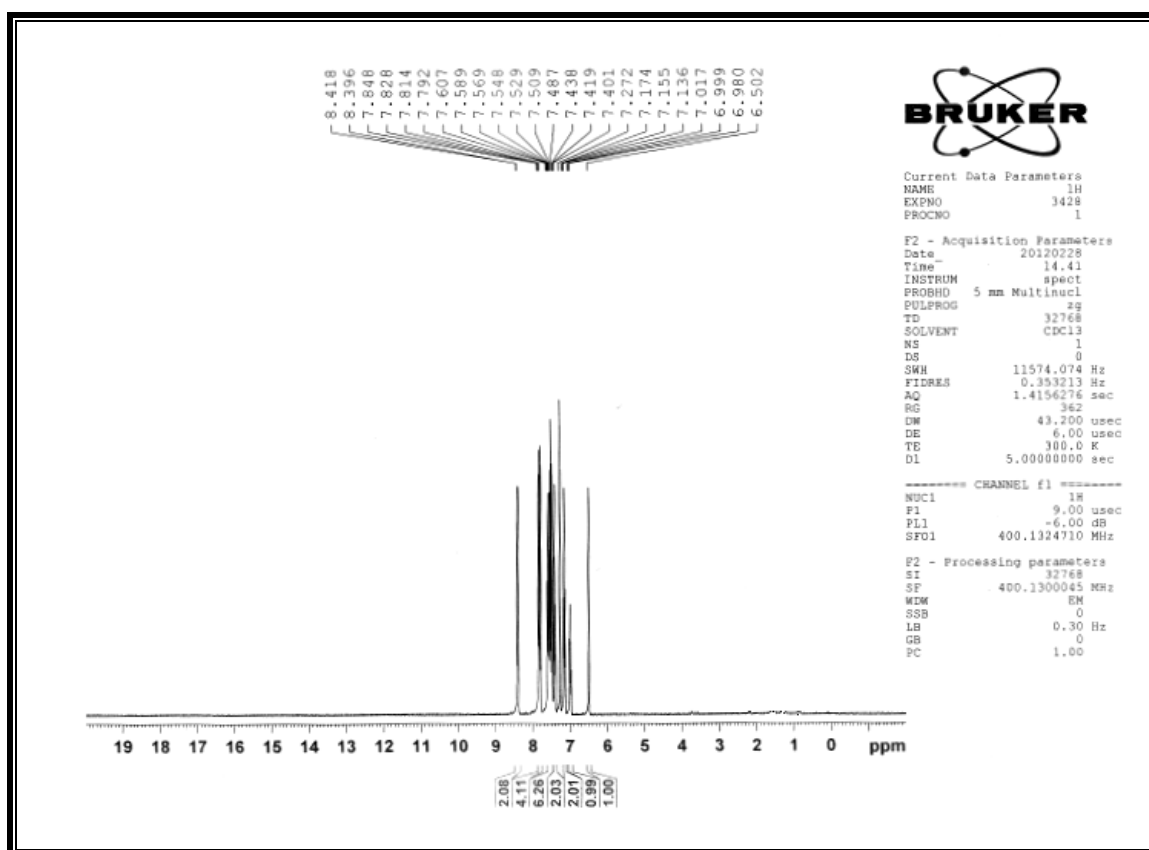
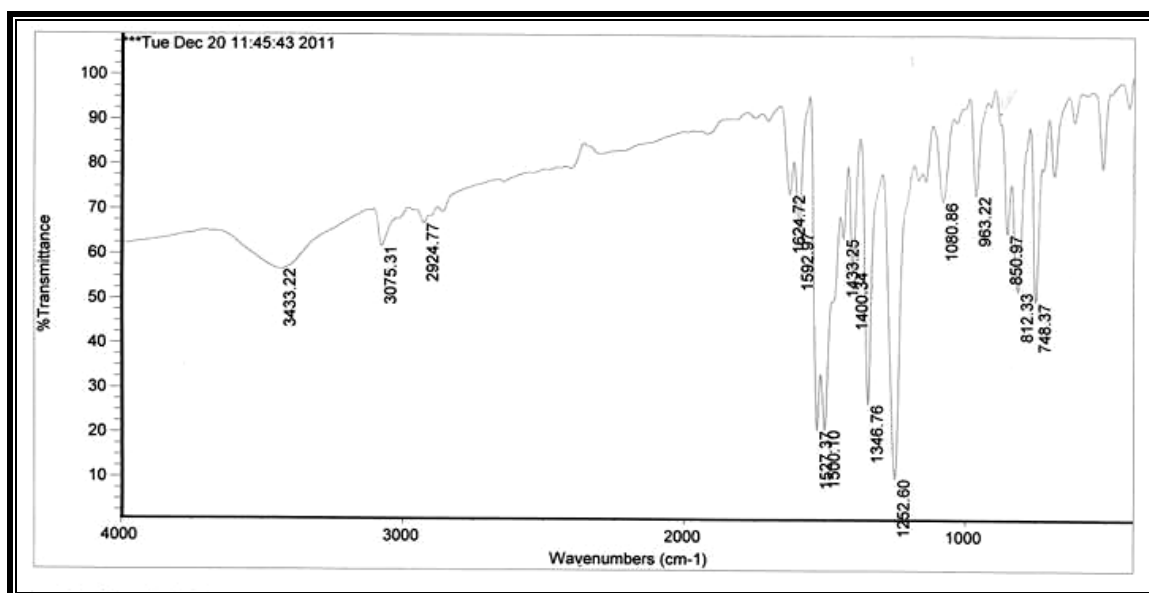


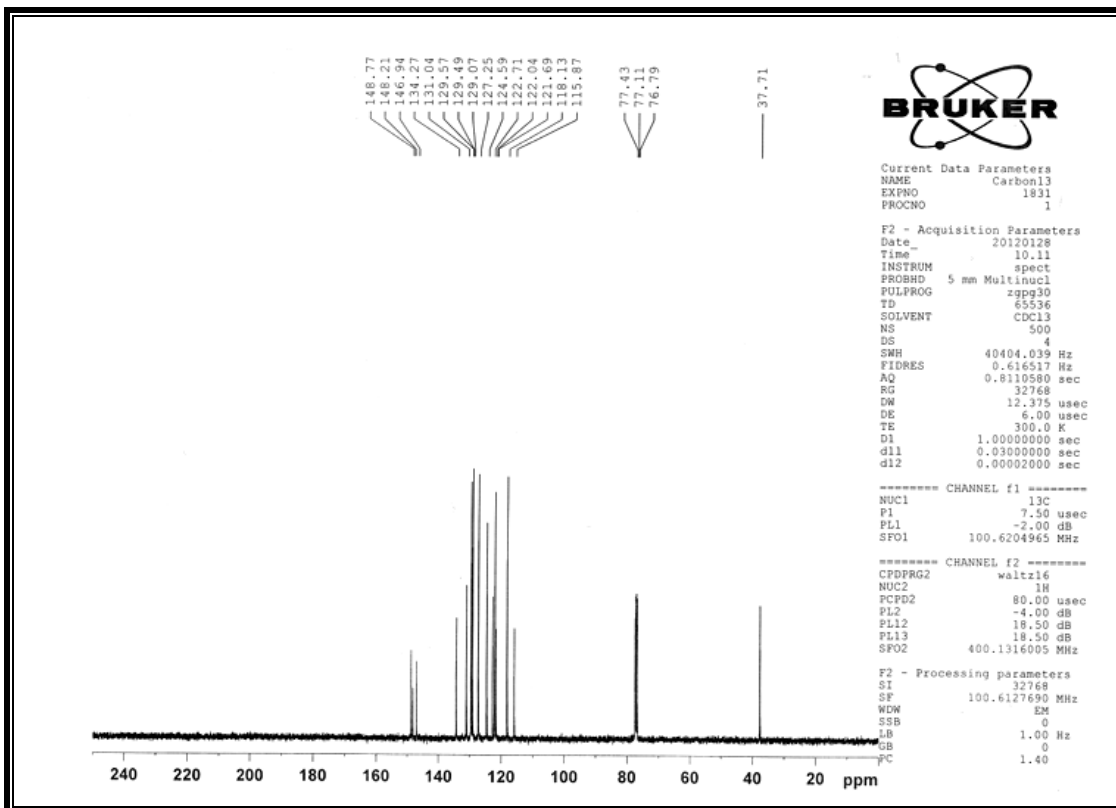
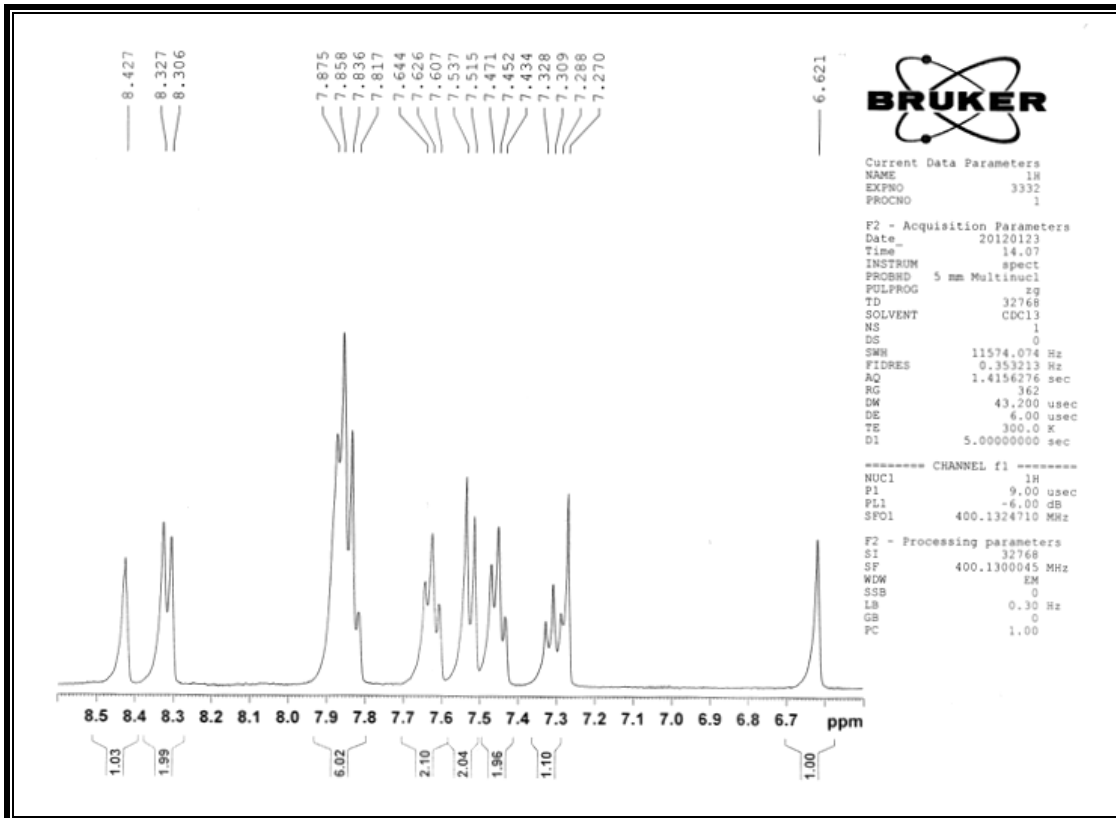
14-(2-nitrophenyl)-14H-dibenzo[a,j]xanthene:

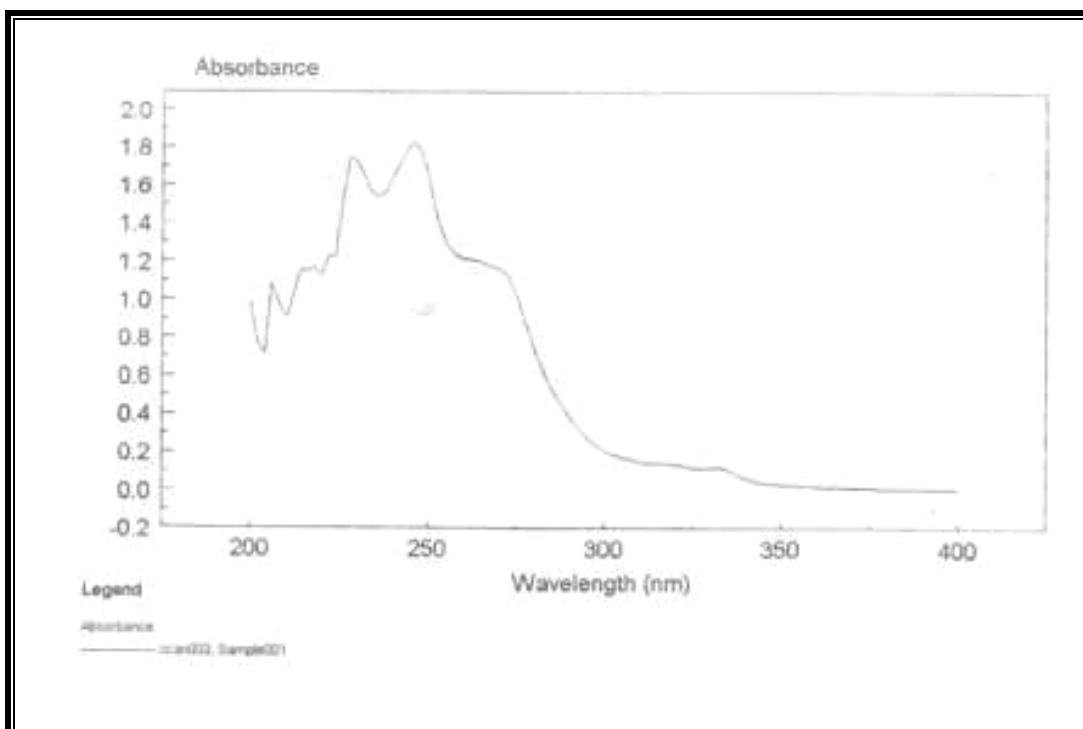
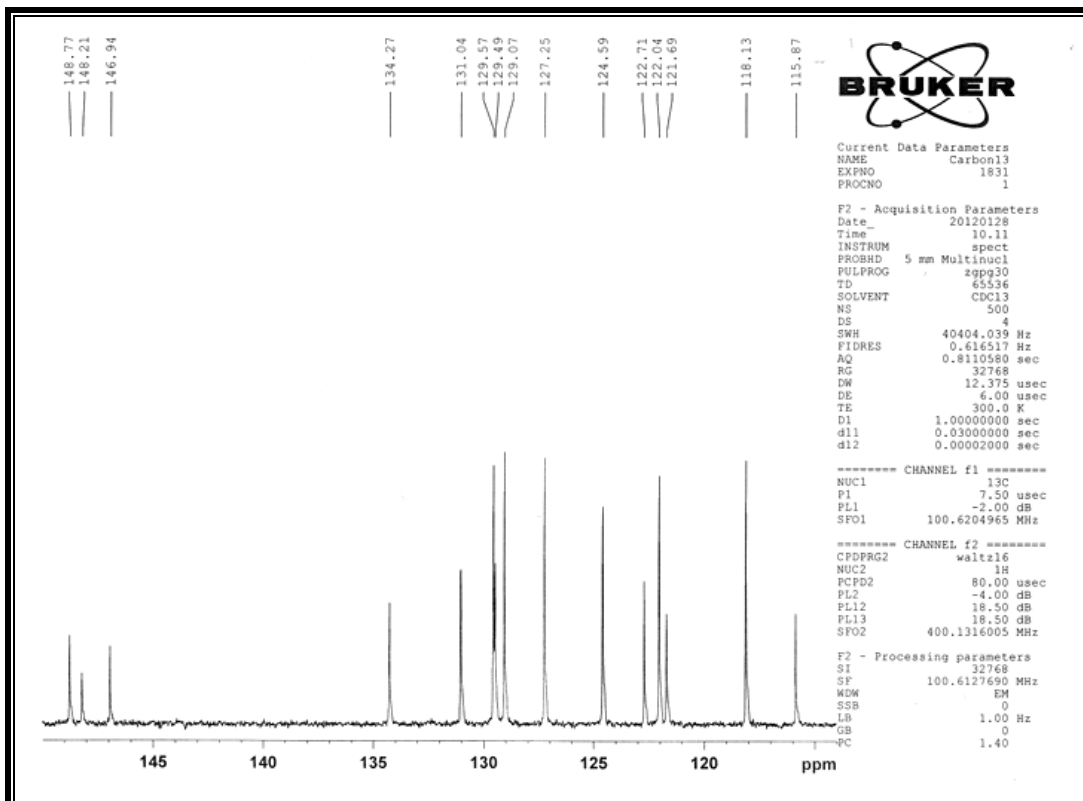




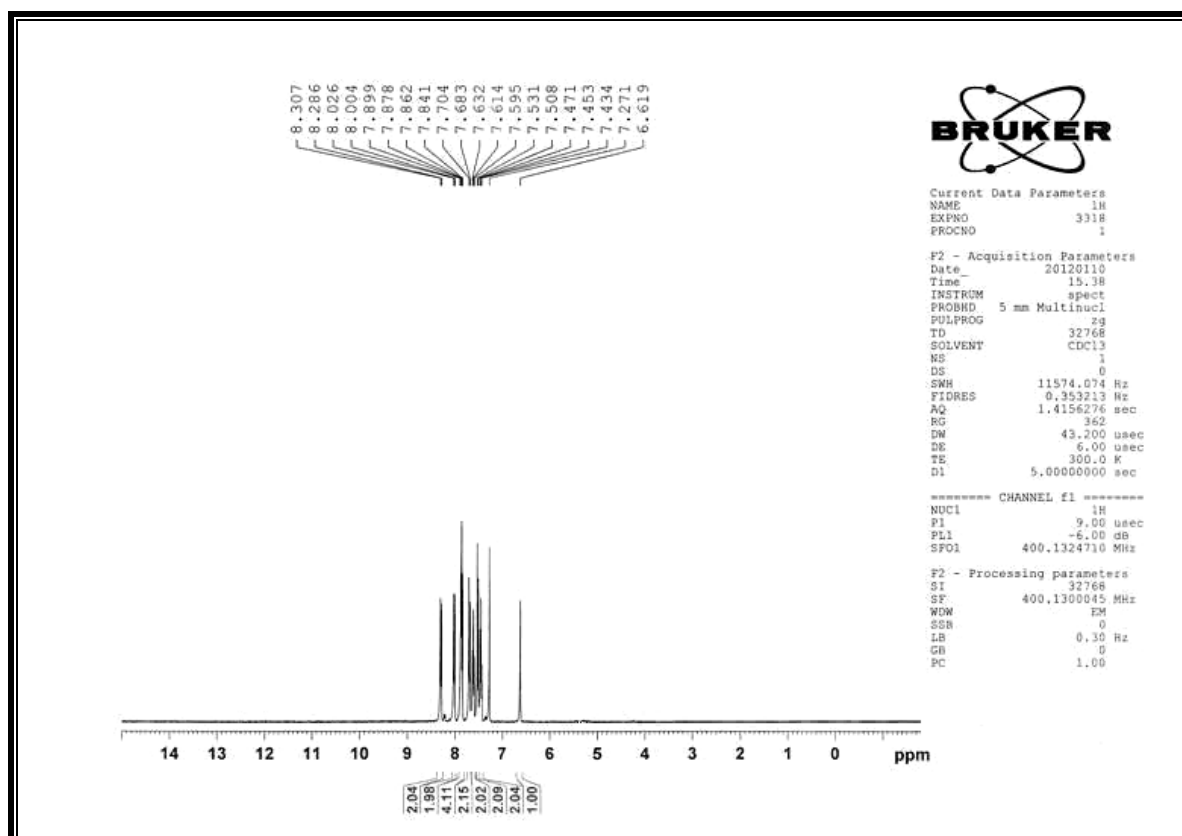
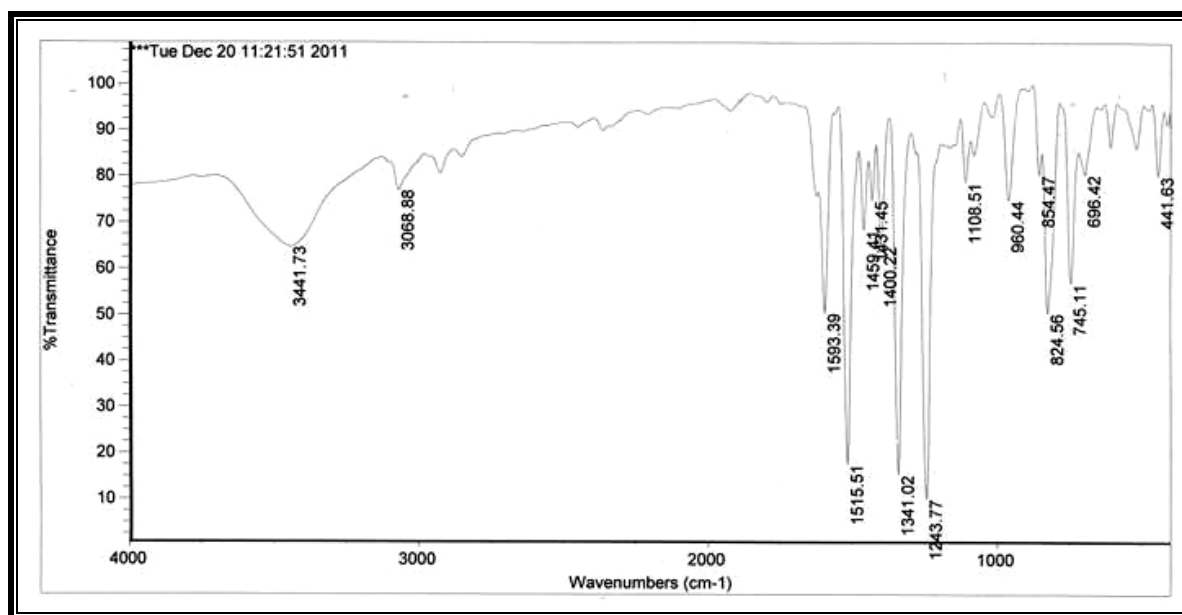
14-(3-nitrophenyl)14H-dibenzo[a,j]xanthene:

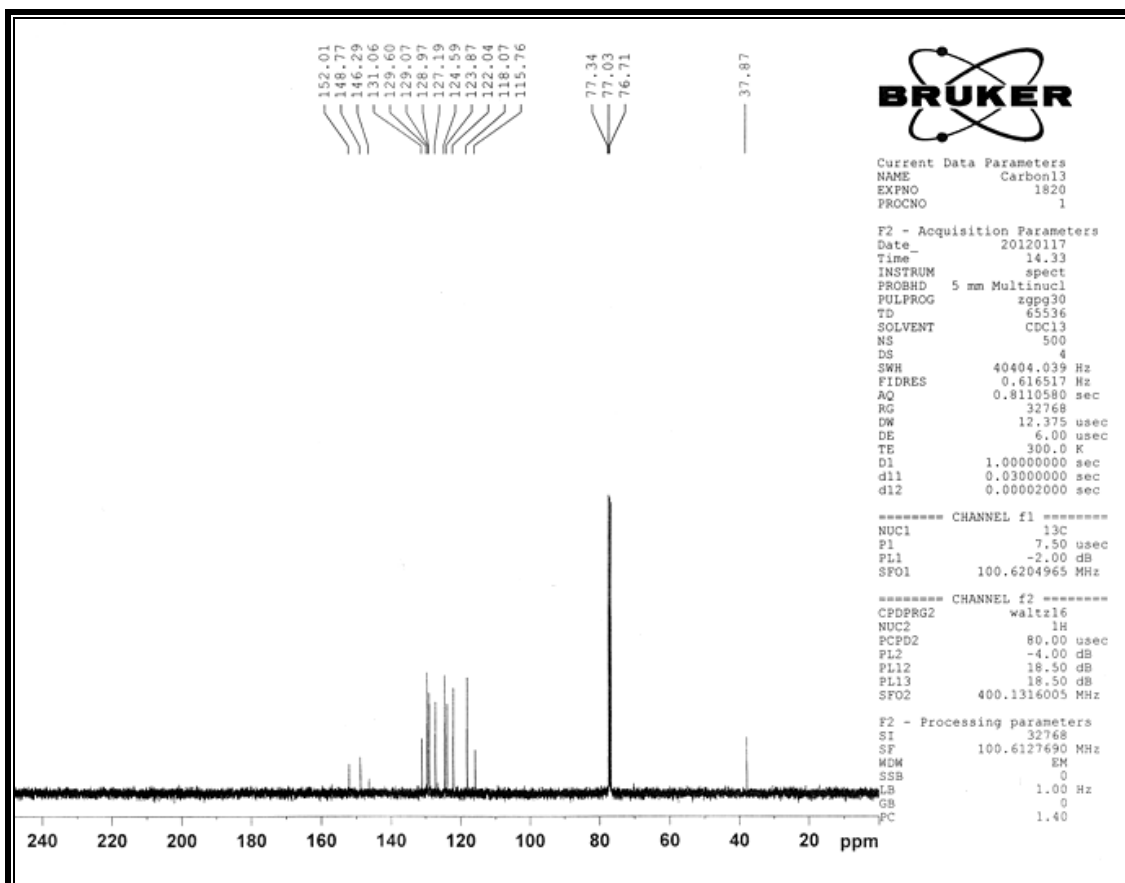
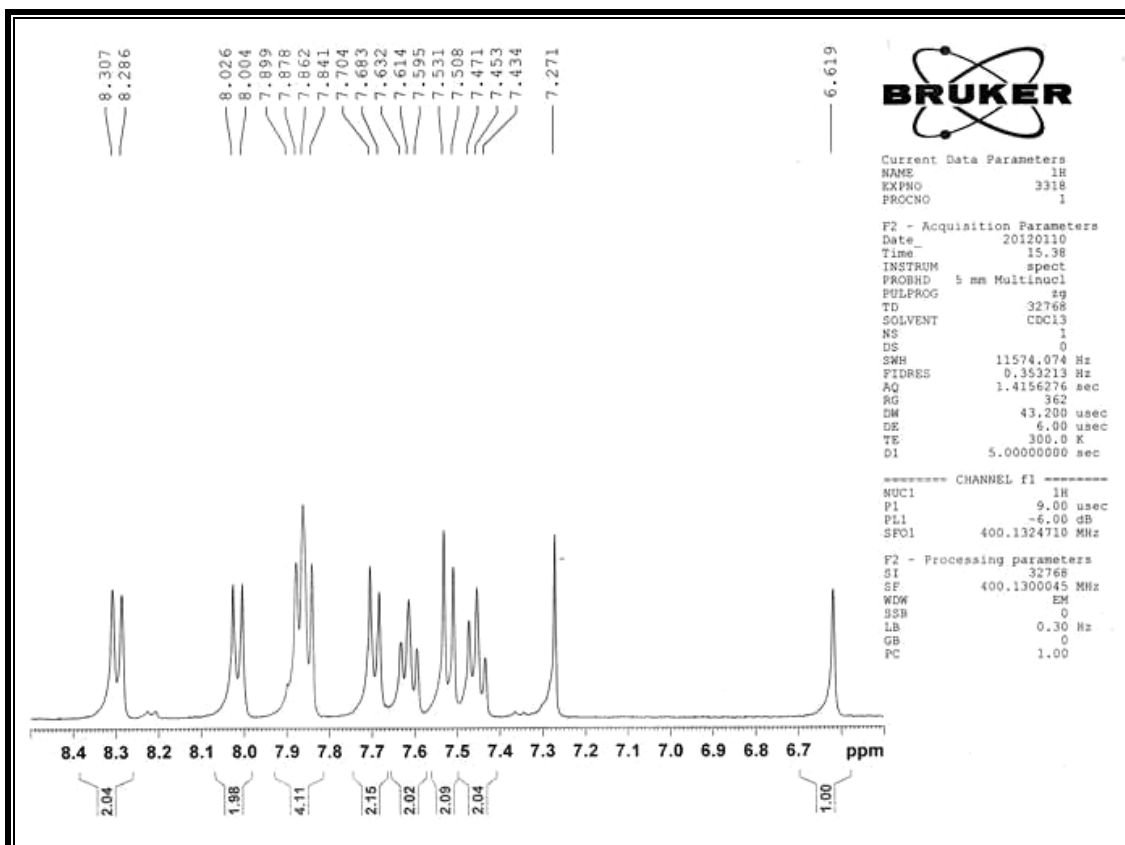




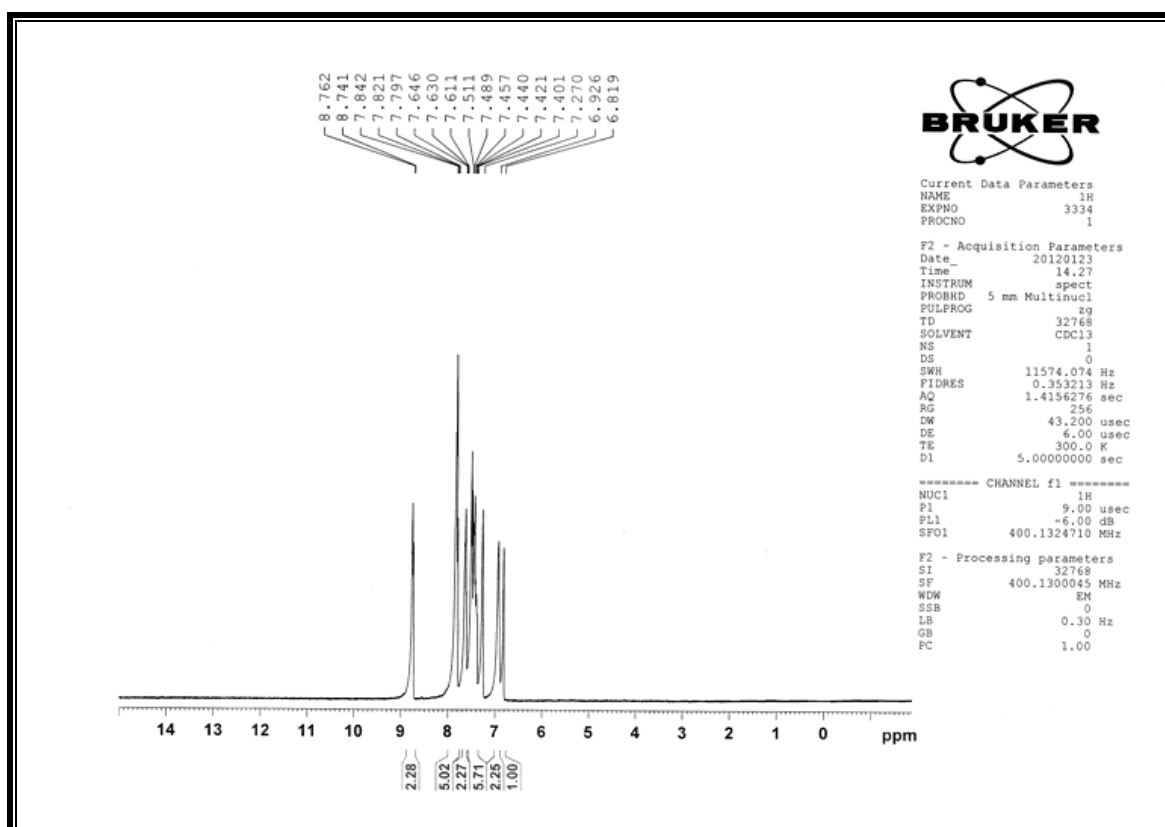
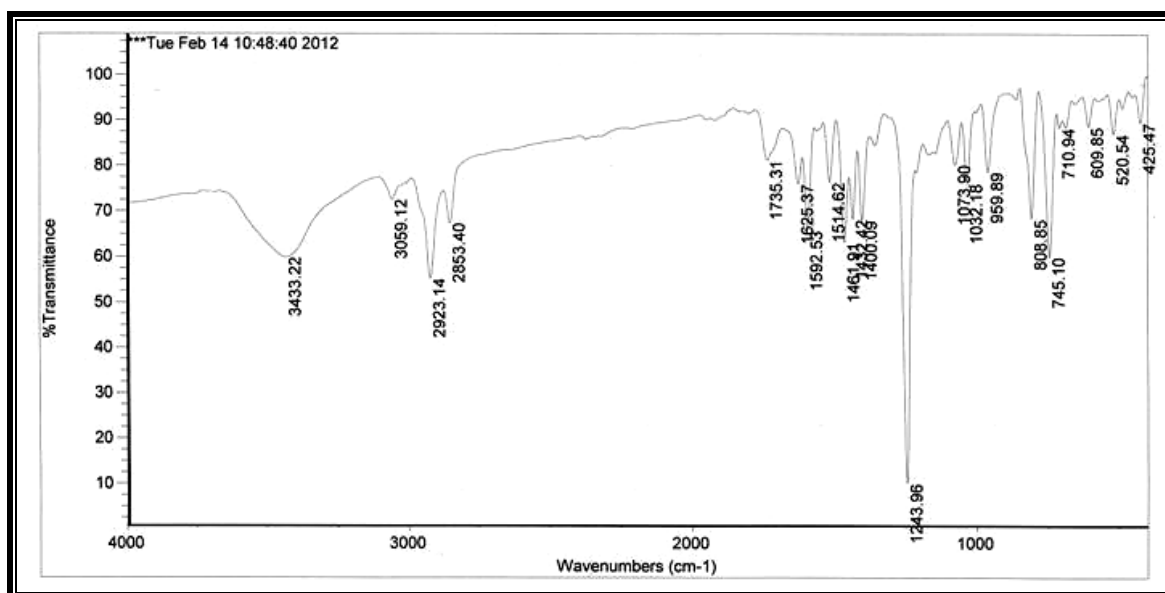


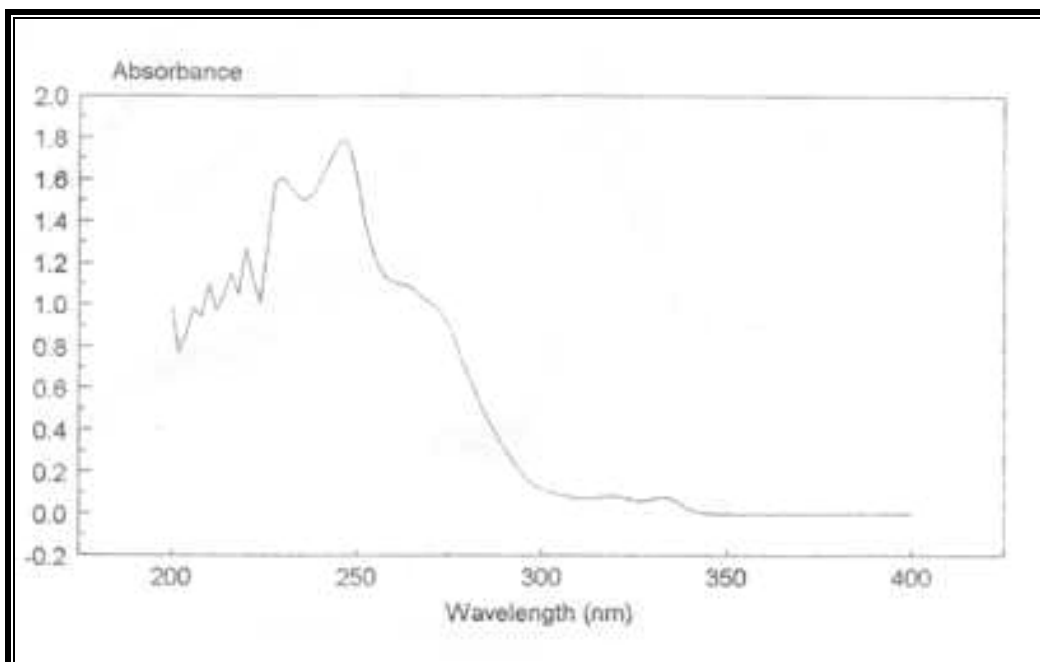
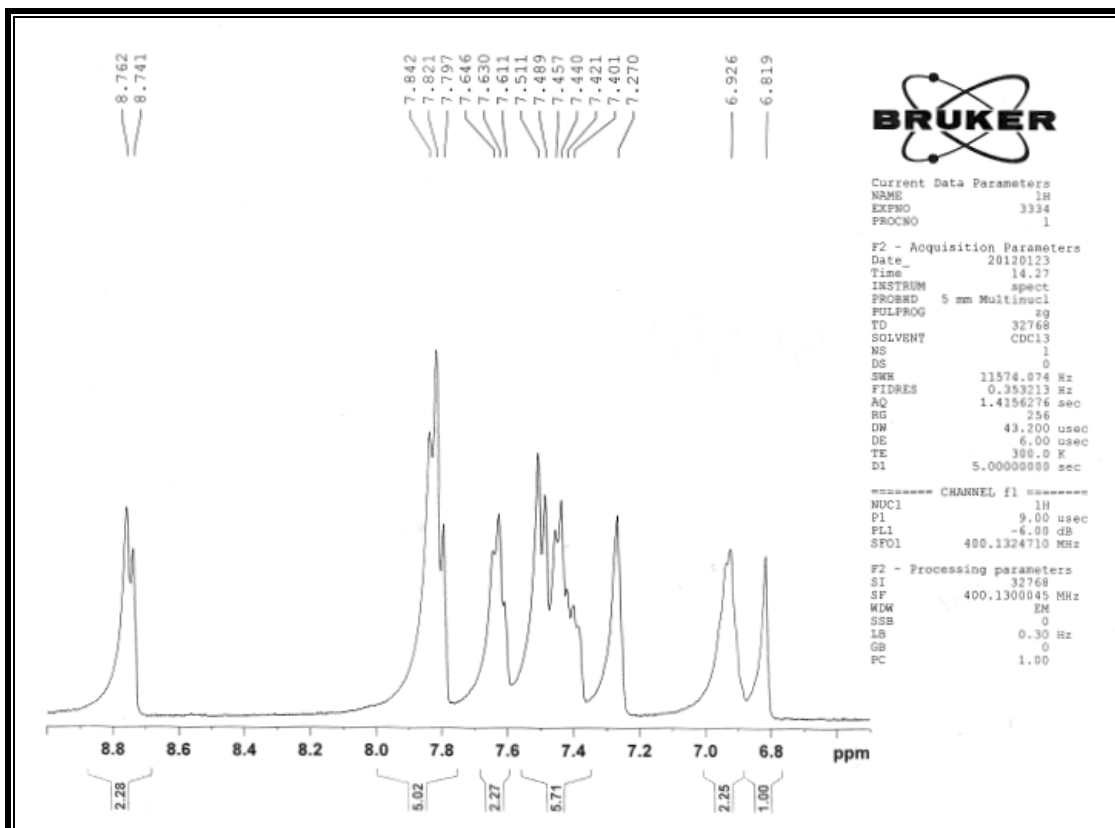
14-(4-nitrophenyl)14H-dibenzo[a,j]xanthene:



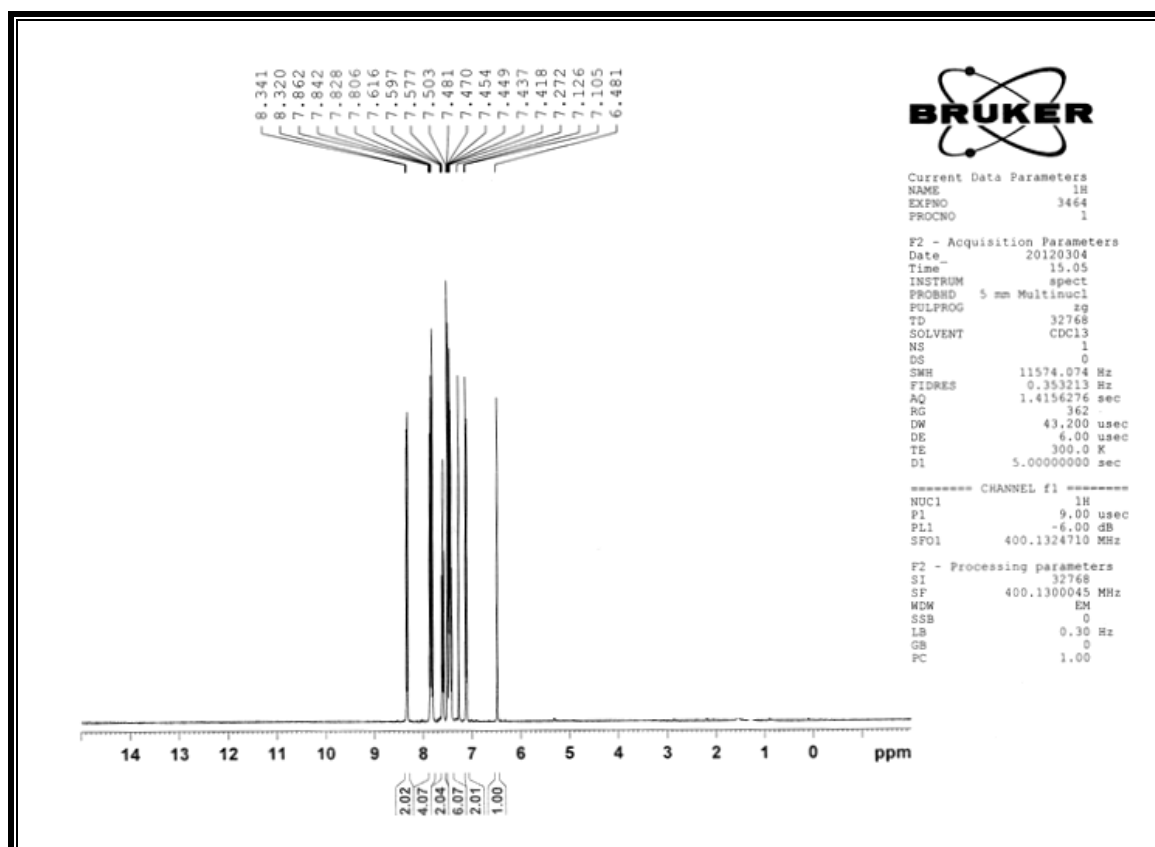
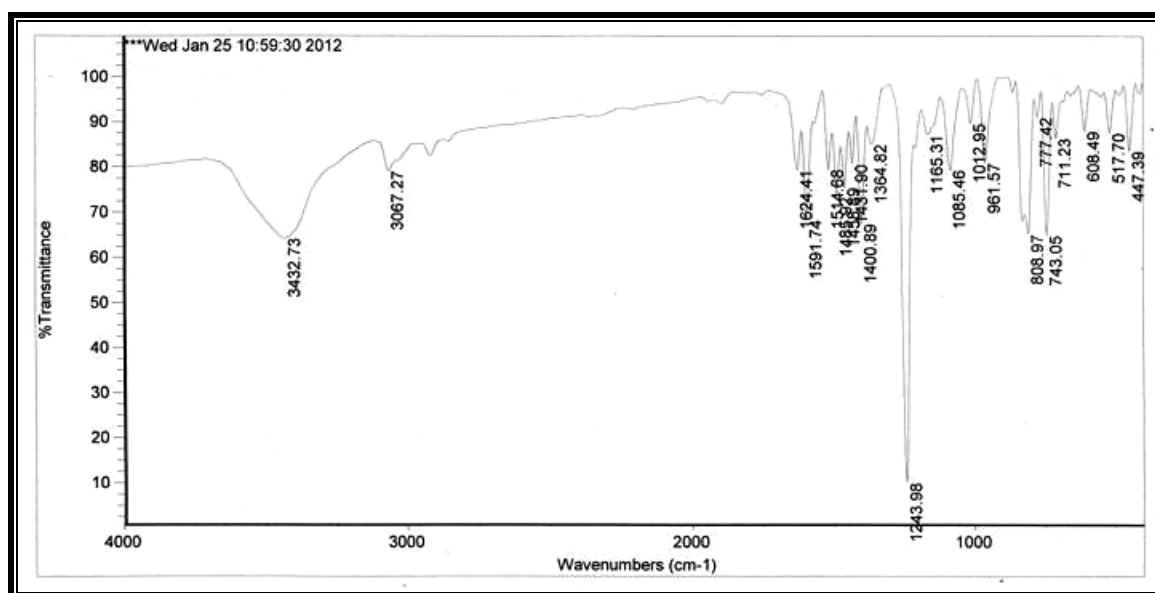


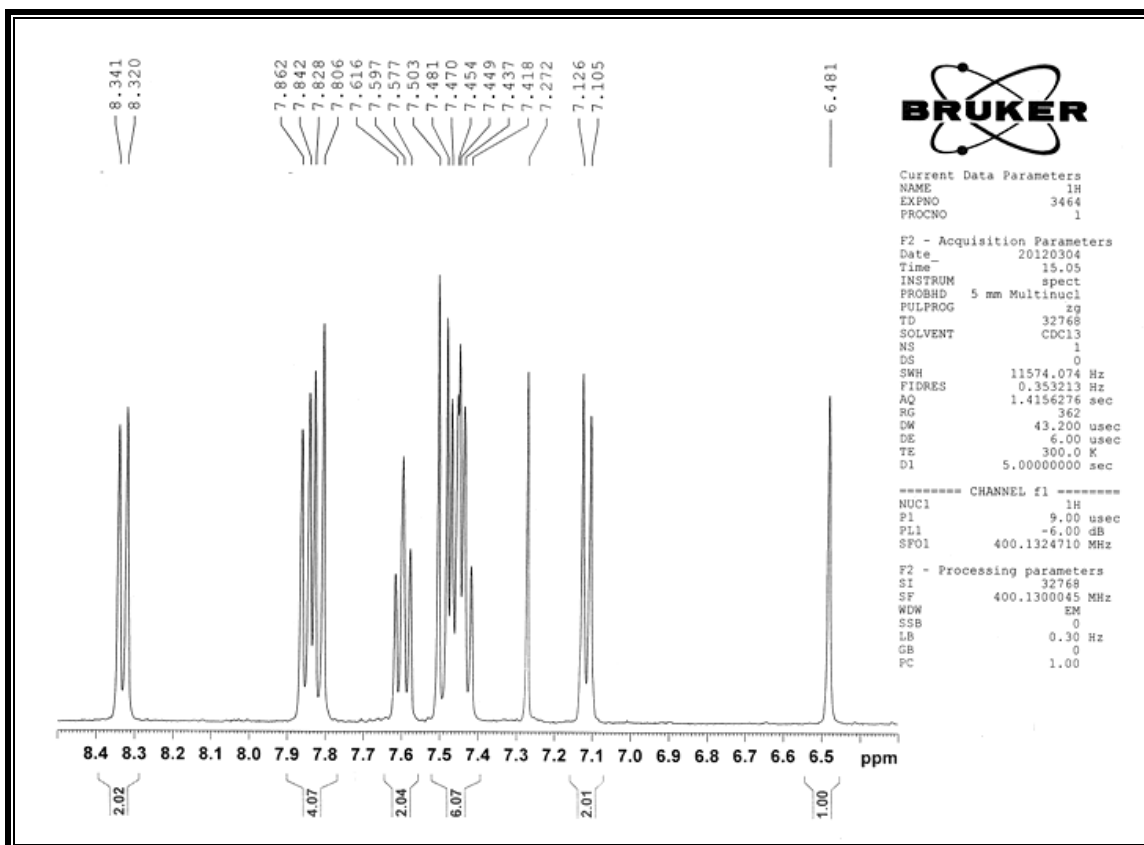
14-(2-chlorophenyl)14H-dibenzo[a,j]xanthene:



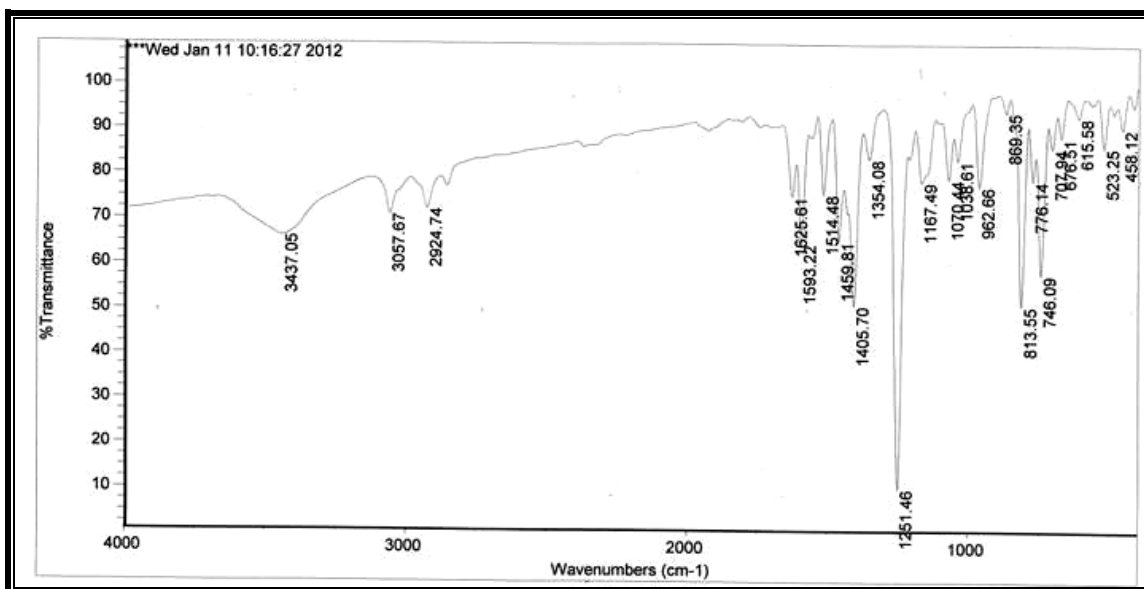


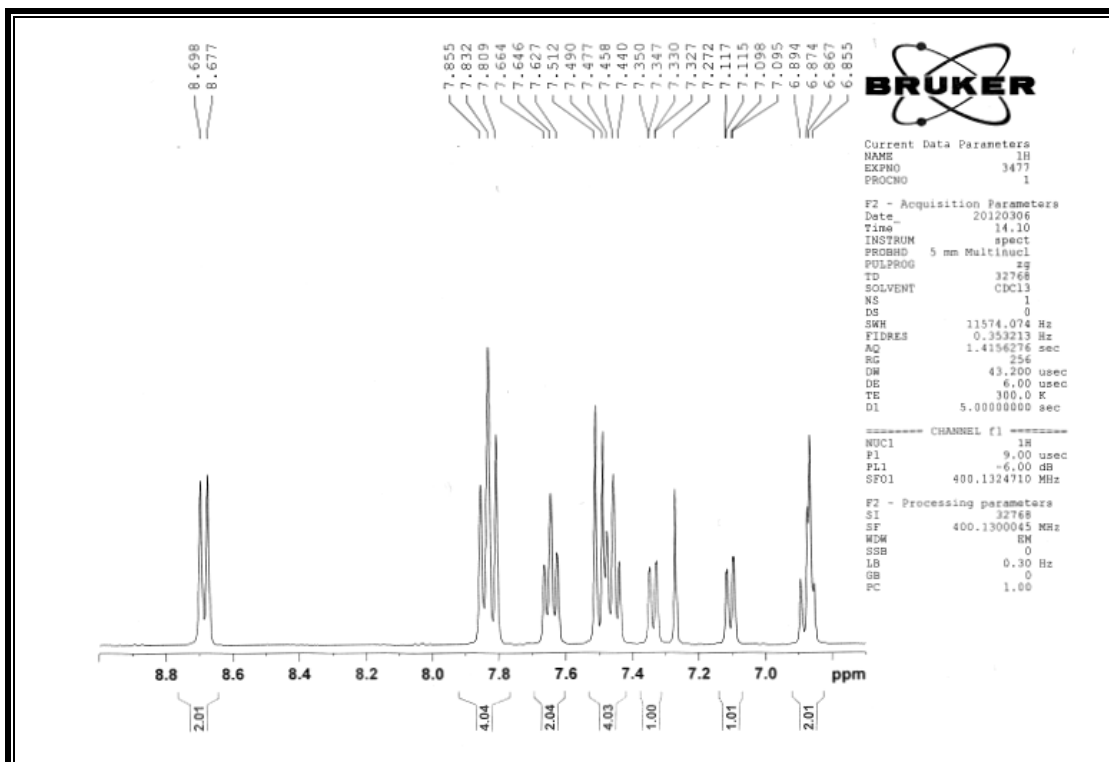
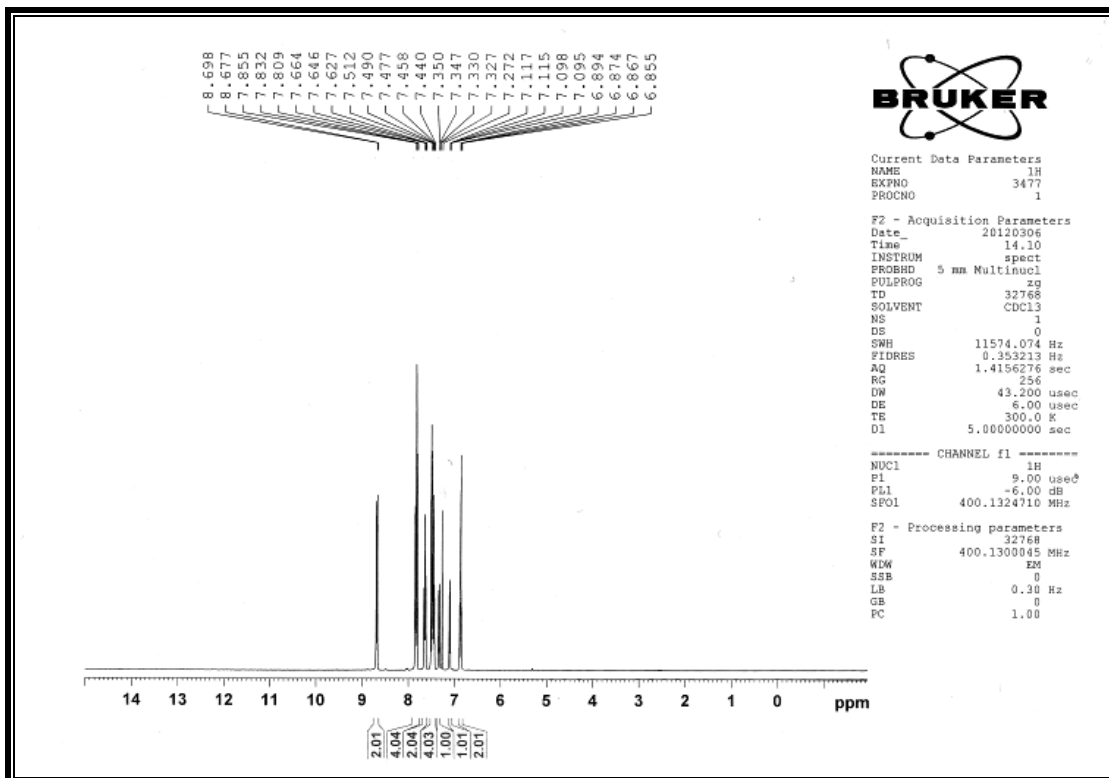
14-(4-chlorophenyl)14H-dibenzo[a,j]xanthene:



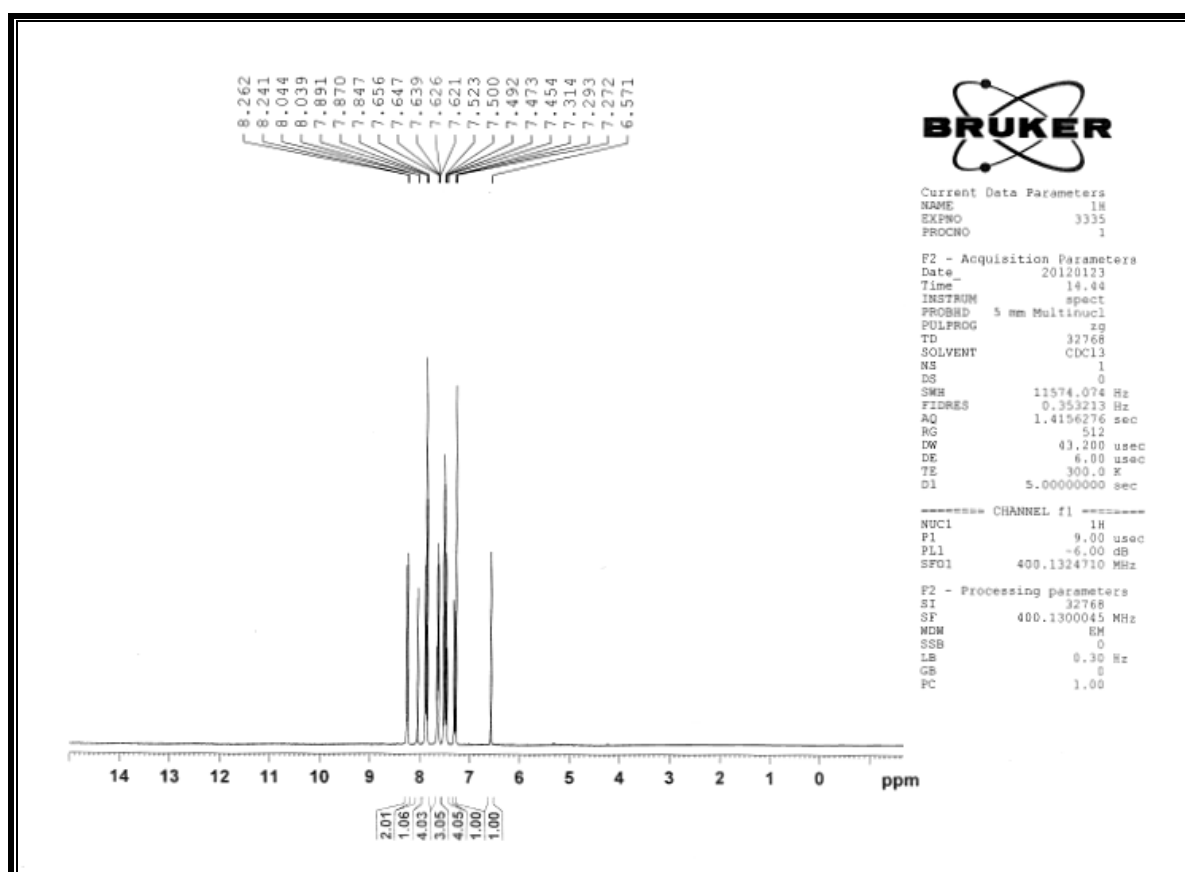
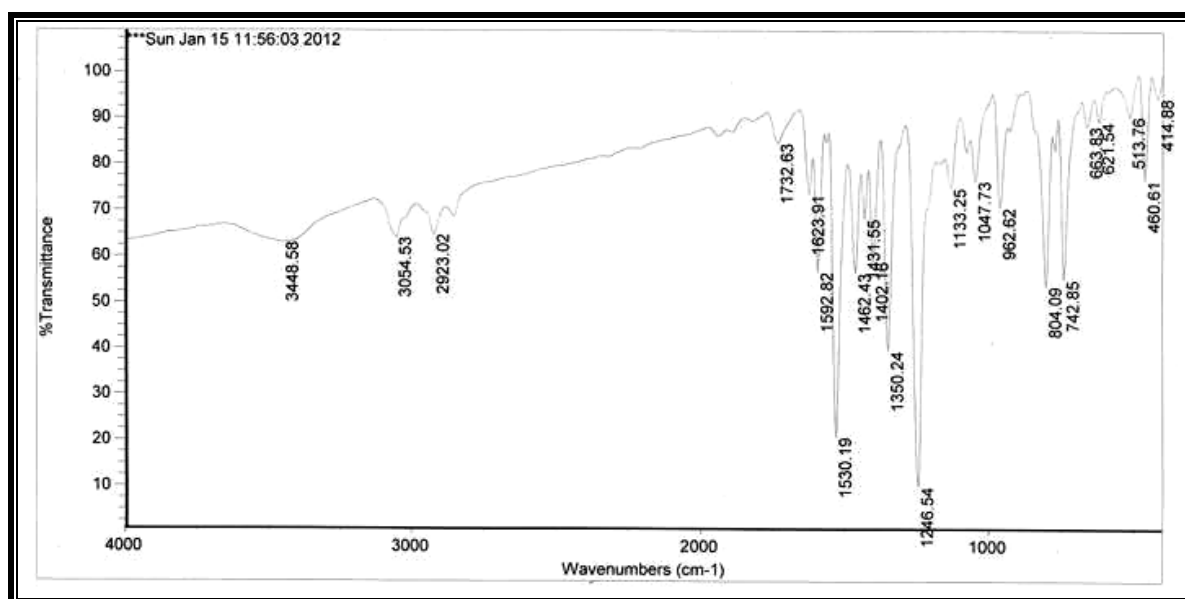


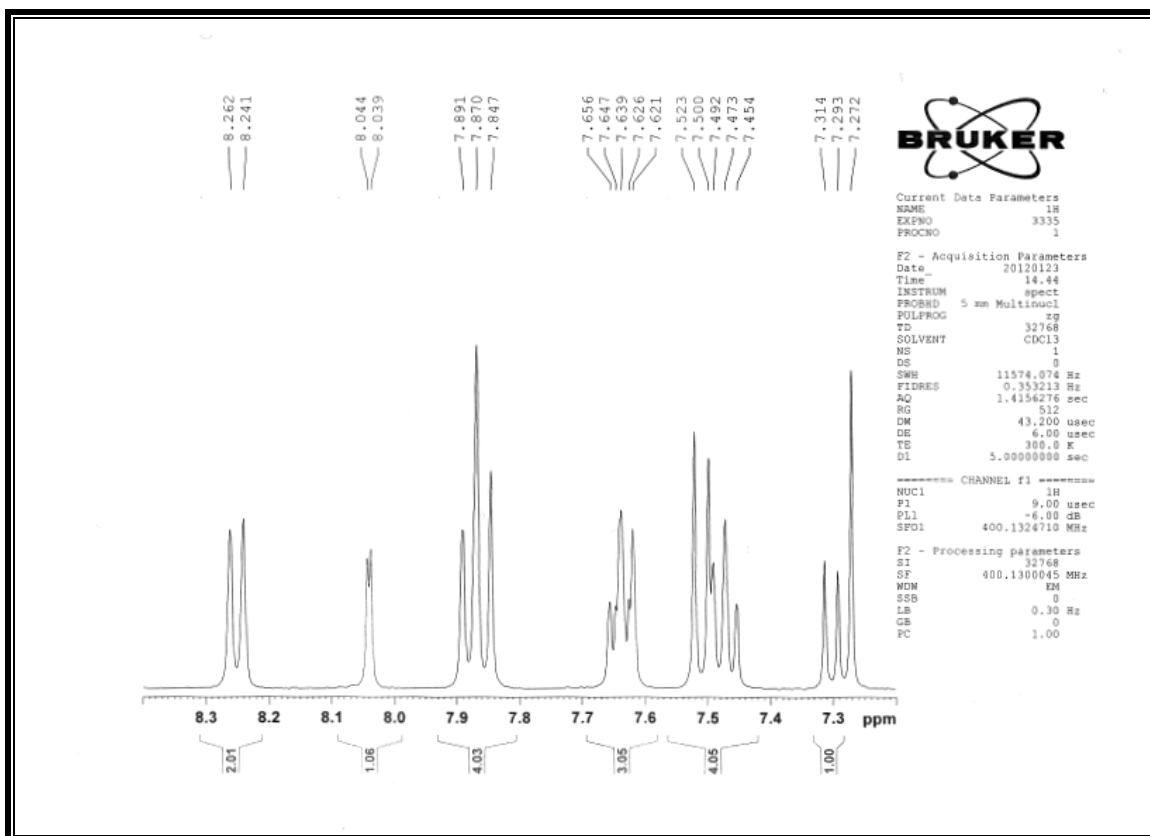
14-(2,3-dichlorophenyl)-14H-dibenzo[a,j]xanthene:



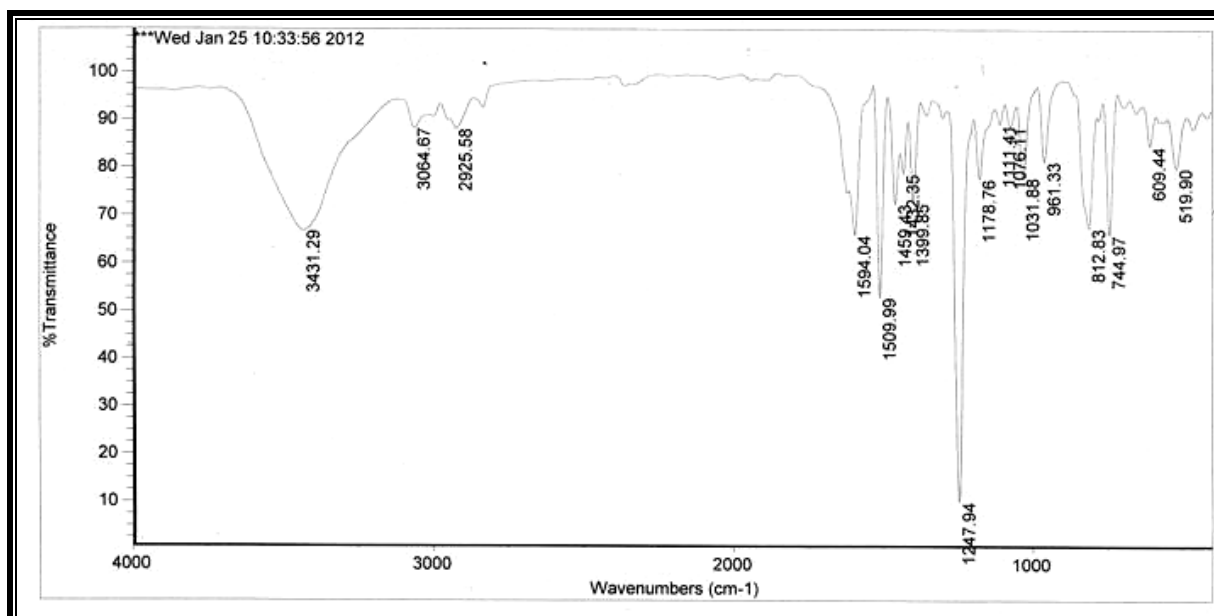


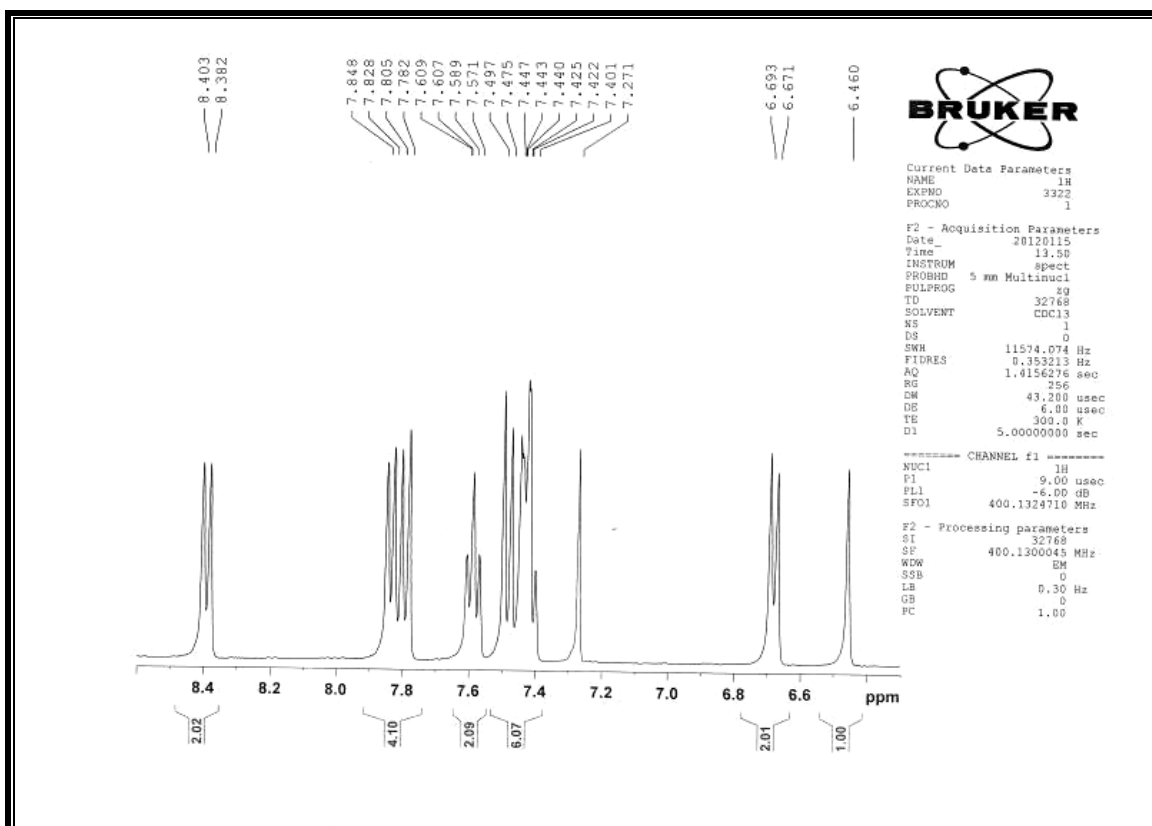
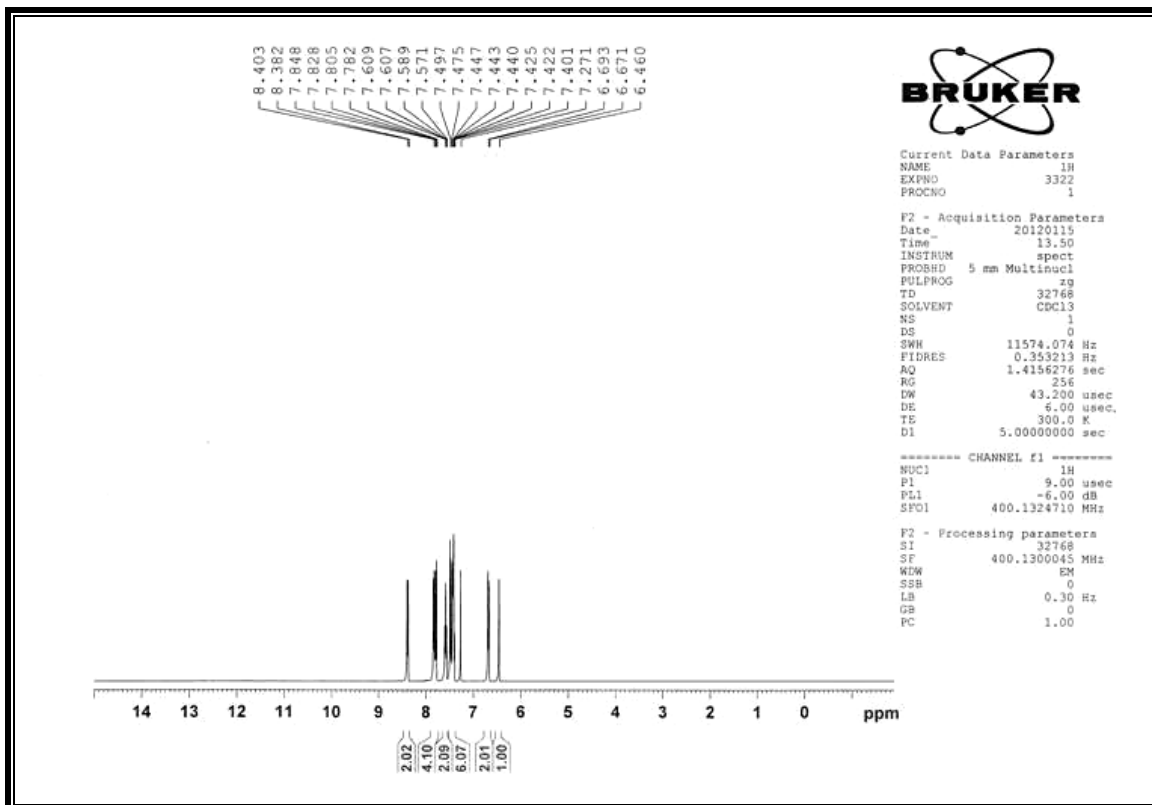
14-(4-chloro-3-nitrophenyl)14H-dibenzo[a,j]xanthene:



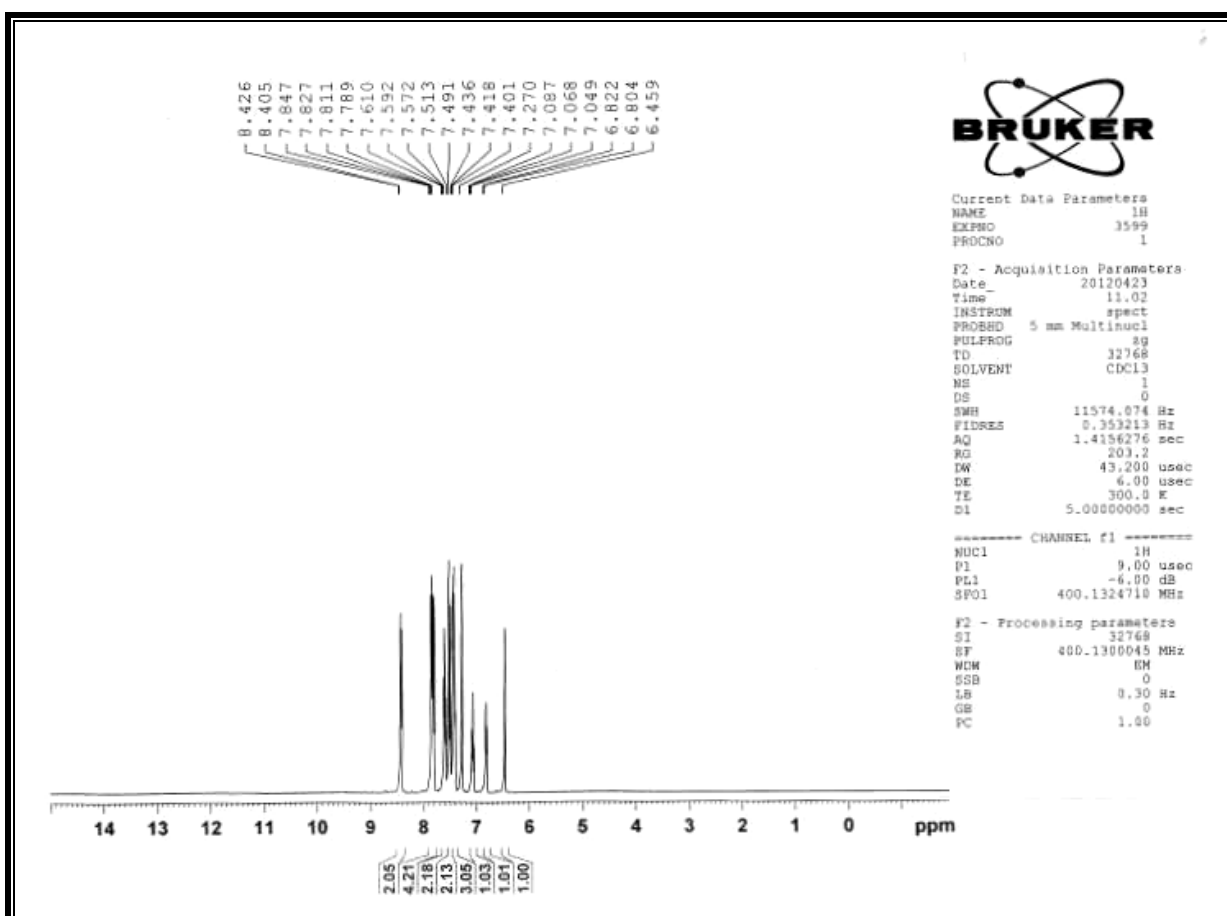
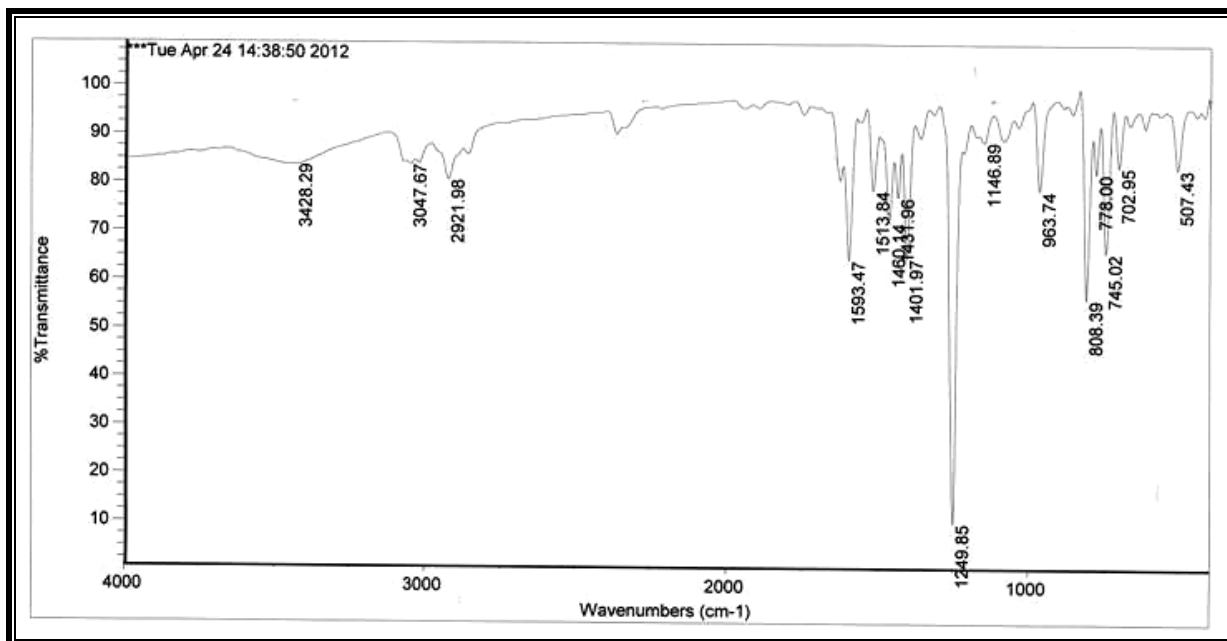


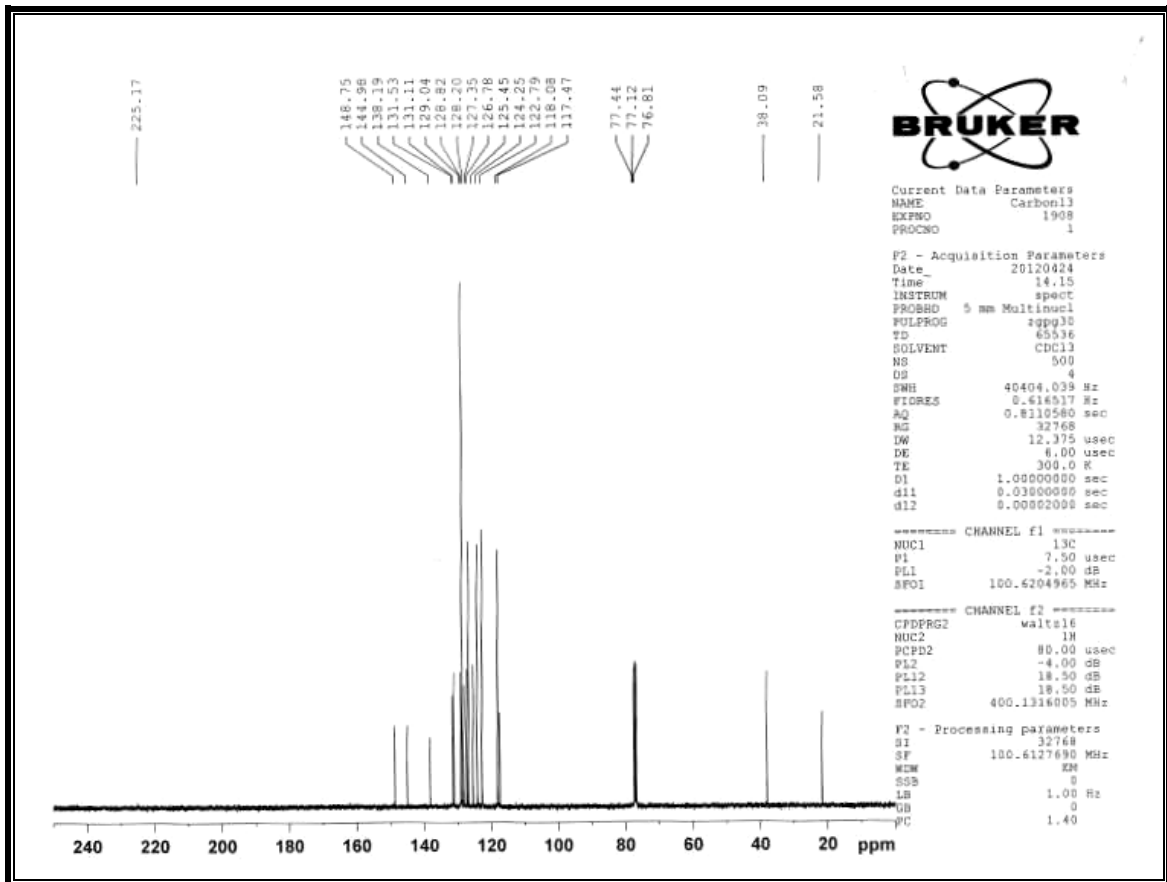
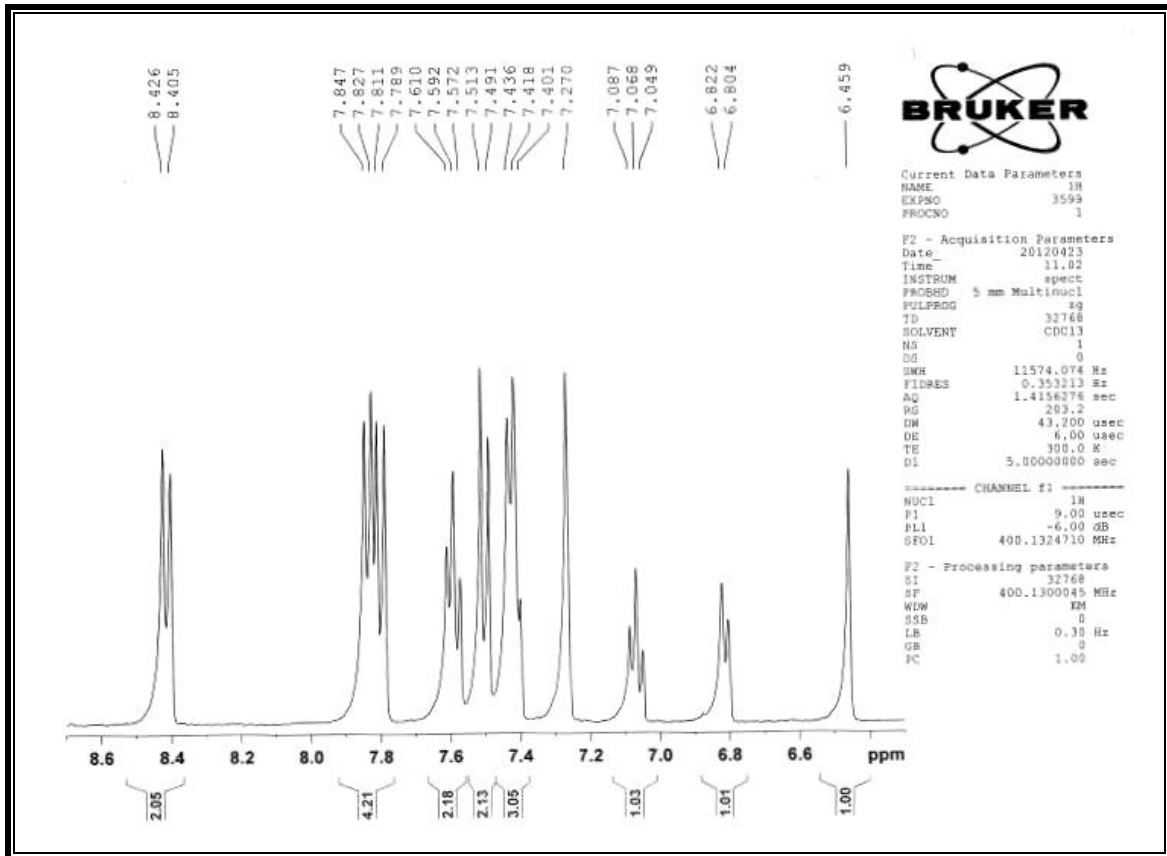
14-(4-methoxy)14H-dibenzo[a,j]xanthene:

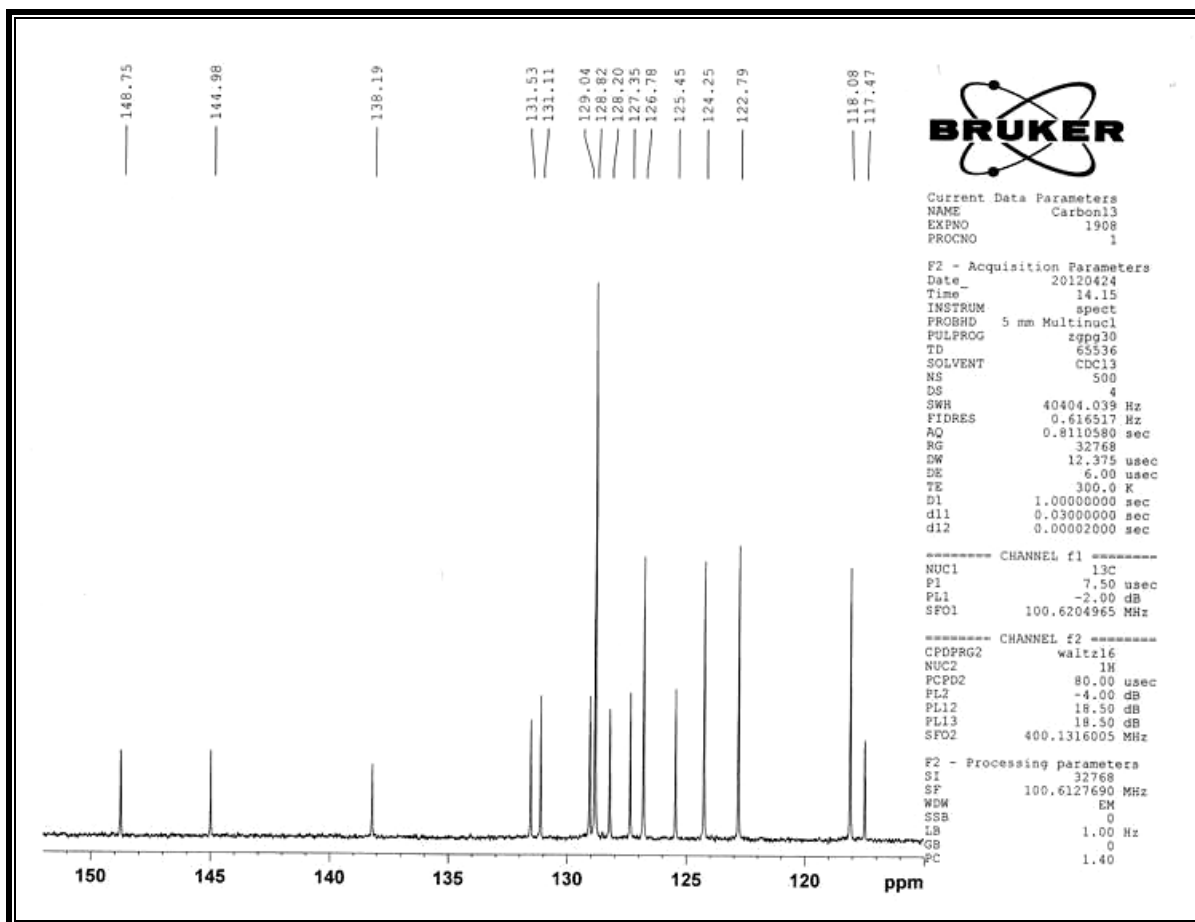




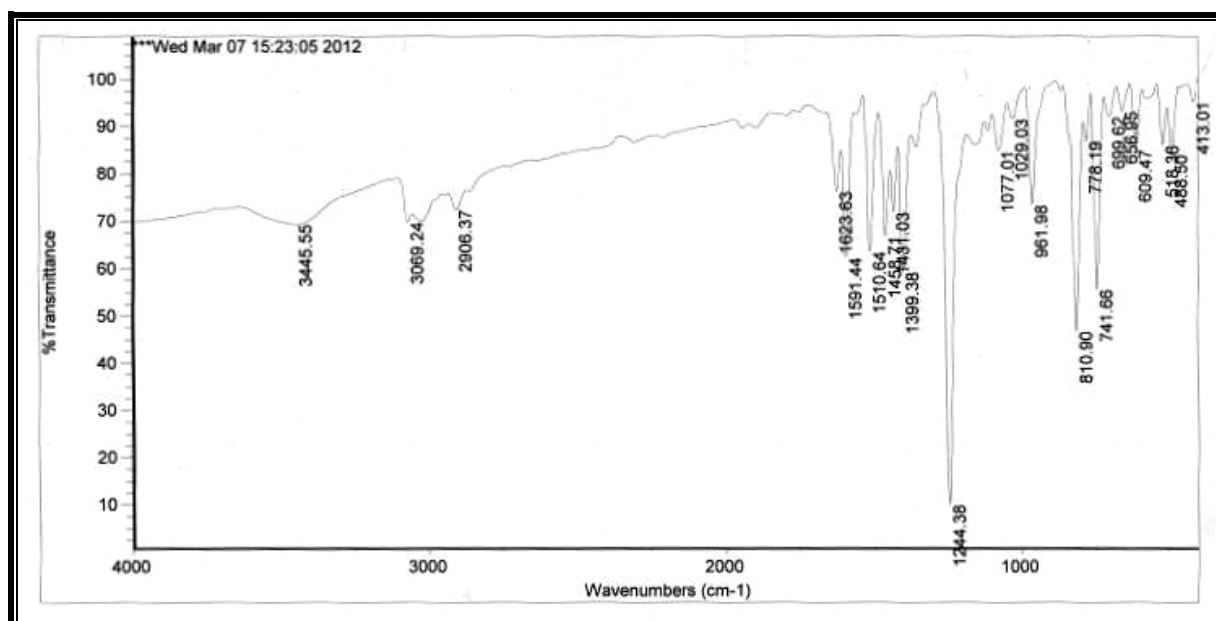
14-(3-methyl)14H-dibenzo[a,j]xanthene:

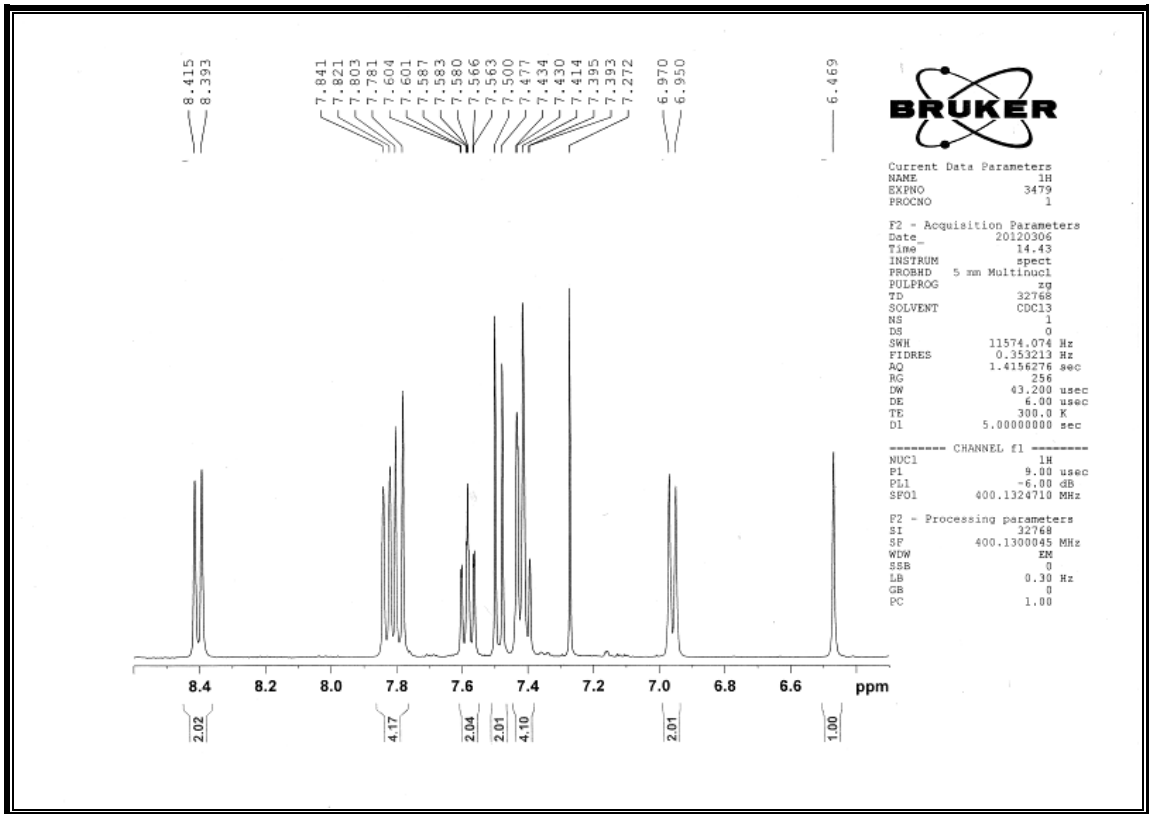
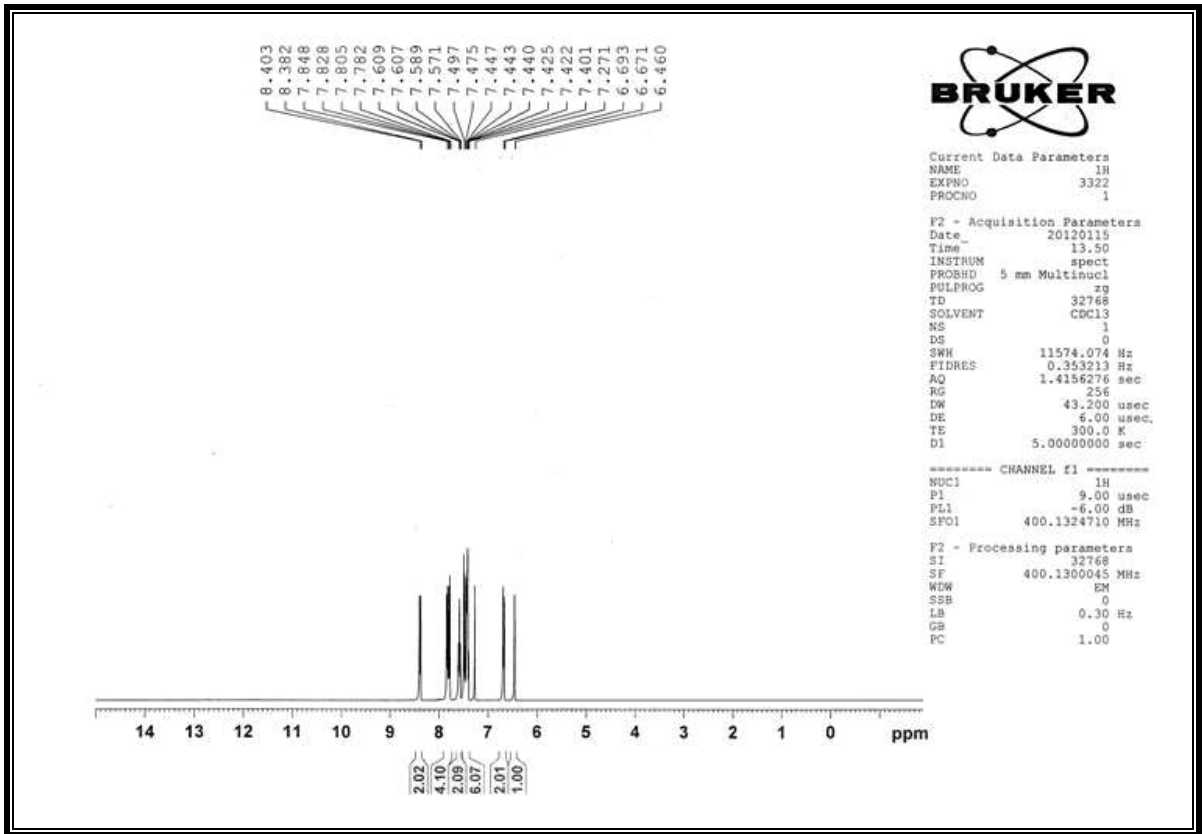






14-(4-methyl)14H-dibenzo[a,j]xanthene:





149.68
142.14
135.91
131.46
131.08
129.10
128.79
128.77
128.11
126.77
124.22
122.72
119.02
117.46

77.29
77.08
76.76

37.64

20.91



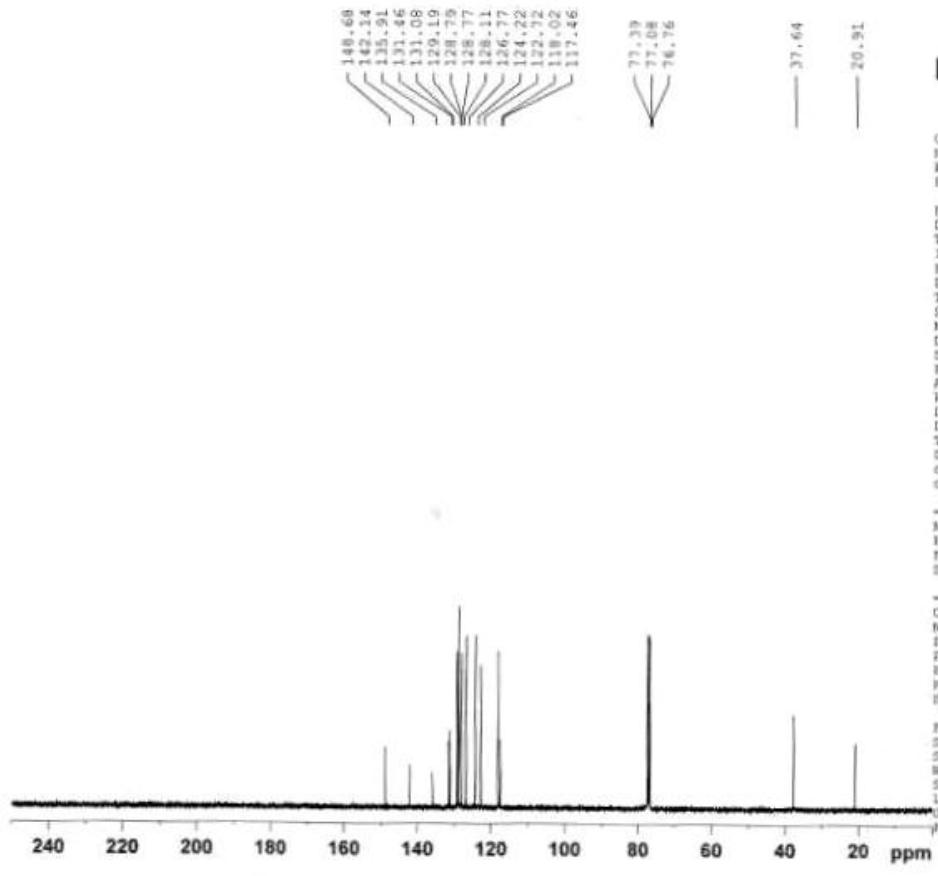
Current Data Parameters
NAME Carbon13
EXPNO 1846
PROCNO 1

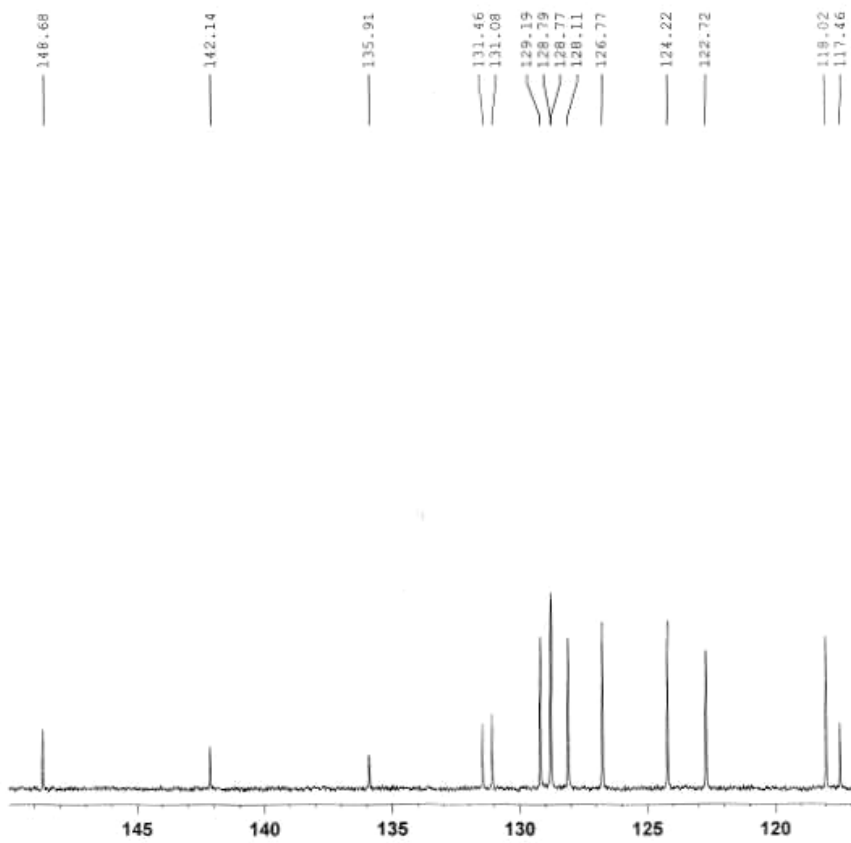
F2 - Acquisition Parameters
Date_ 20120307
Time 14.59
INSTRUM spect
PROBHD 5 mm Multinuc1
PULPROG zgpg30
TD 65536
SOLVENT CDCl3
NS 500
DS 4
SWH 40404.035 Hz
FIDRES 0.414517 Hz
AQ 0.6110580 sec
RG 32768
DM 12.375 usec
DE 6.00 usec
TE 300.0 K
SI 1.0000000 sec
dS1 0.03000000 sec
dS2 0.00002000 sec

----- CHANNEL f1 -----
NUC1 13C
P1 7.50 usec
PL1 -2.00 dB
SFO1 100.6204965 MHz

----- CHANNEL f2 -----
CPDPRG2 waltz16
NUC2 1H
PCPD2 80.00 usec
PL2 -4.00 dB
PL12 18.50 dB
PL13 18.50 dB
SFO2 400.1316005 MHz

F2 - Processing parameters
SI 32768
SF 100.6127490 MHz
SCW 8M
SSB 0
LB 1.00 Hz
GB 0
PC 1.40





Current Data Parameters
 NAME Carbon13
 EXPNO 1866
 PROCNO 1

F2 - Acquisition Parameters
 Date 20120307
 Time 14.59
 INSTRUM spect
 PROSD 5 mm Multiscl
 PULPROG zgpg30
 TD 65536
 SOLVENT CDCl3
 NS 500
 DS 4
 SWH 40404.039 Hz
 FIDRES 0.416517 Hz
 AQ 0.8110580 sec
 RG 32768
 DX 12.375 usec
 DE 6.00 usec
 TE 300.0 K
 D1 1.00000000 sec
 d11 0.03000000 sec
 d12 0.00002000 sec

----- CHANNEL f1 -----
 NUC1 13C
 F1 7.50 usec
 PL1 -2.00 dB
 SFO1 100.6204965 MHz

----- CHANNEL f2 -----
 CPDPRG2 waltz16
 NUC2 1H
 PCPD2 80.00 usec
 PL2 -4.00 dB
 PL12 18.50 dB
 PL13 18.50 dB
 SFO2 400.1316005 MHz

F2 - Processing parameters
 SI 32768
 SF 100.6127690 MHz
 WCW EM
 SSB 0
 LB 1.00 Hz
 GB 0
 PC 1.40