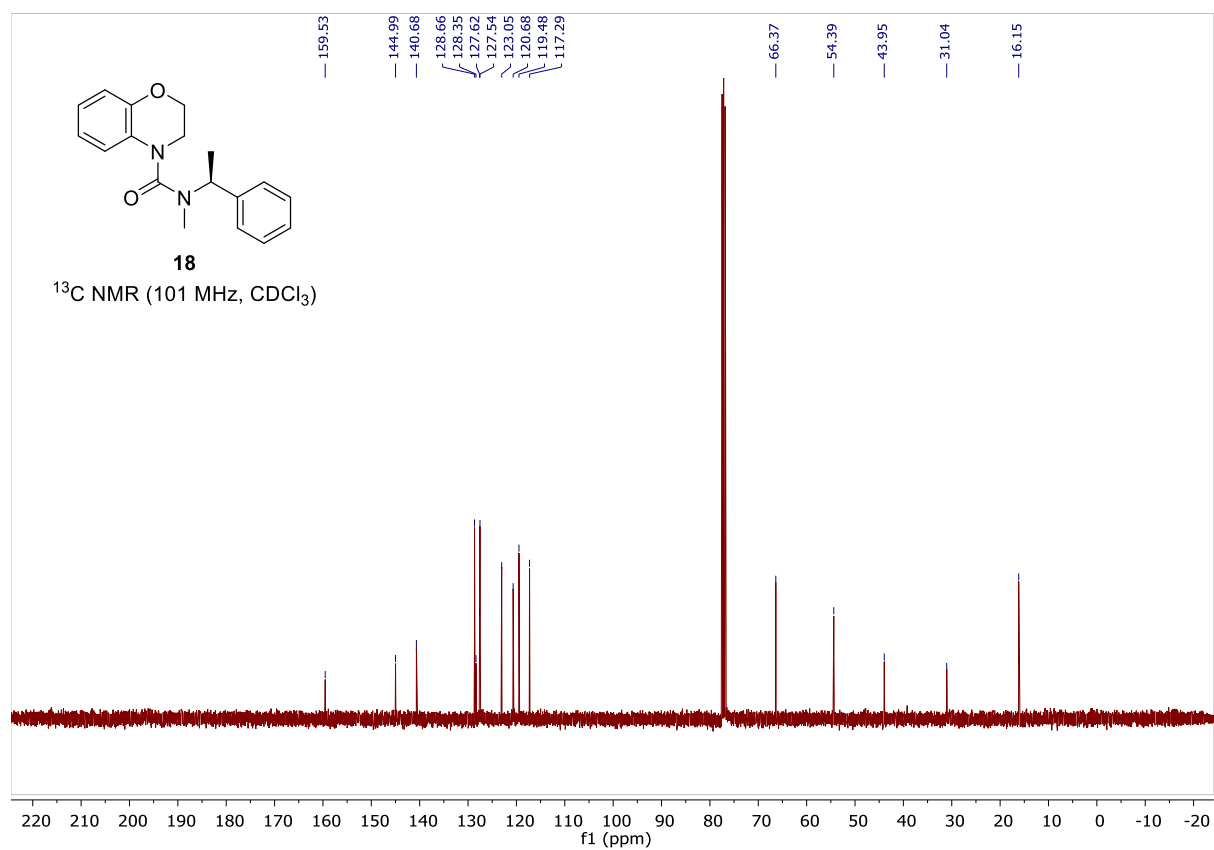
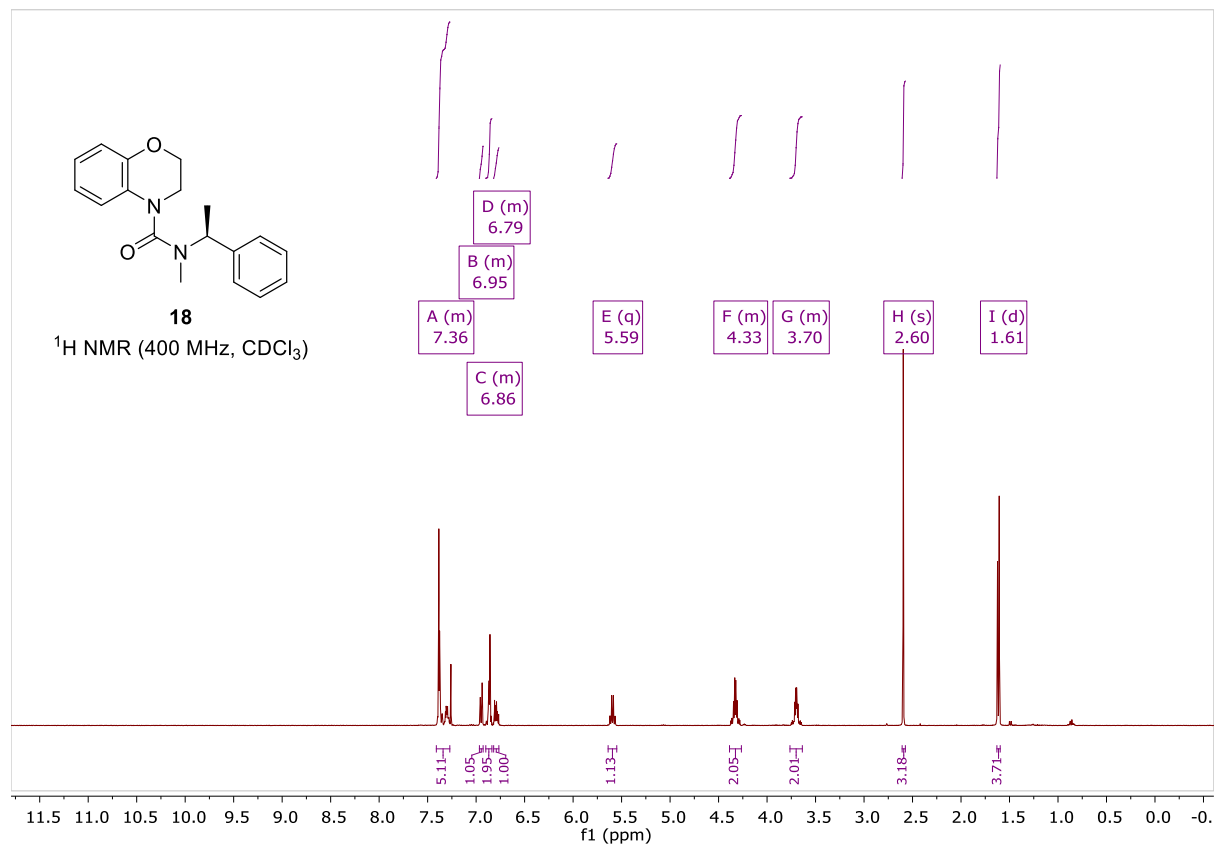
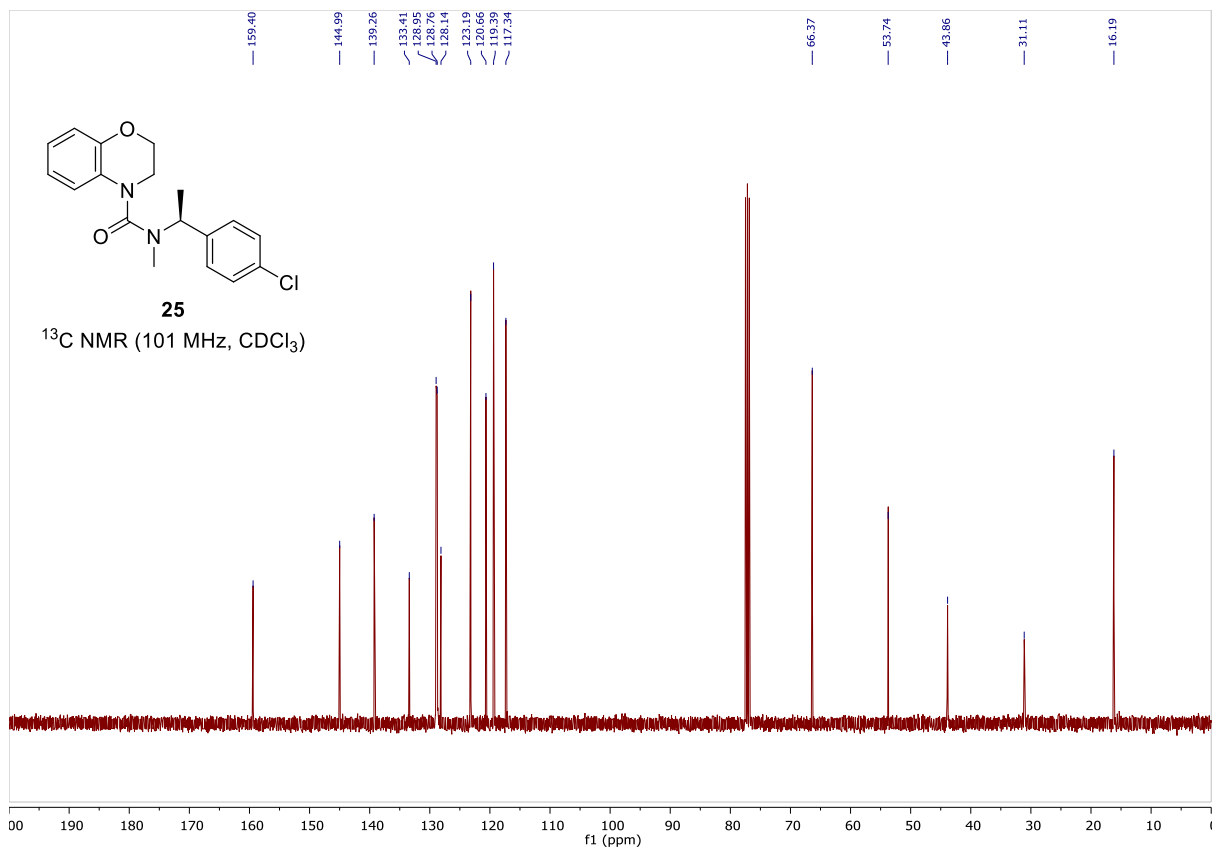
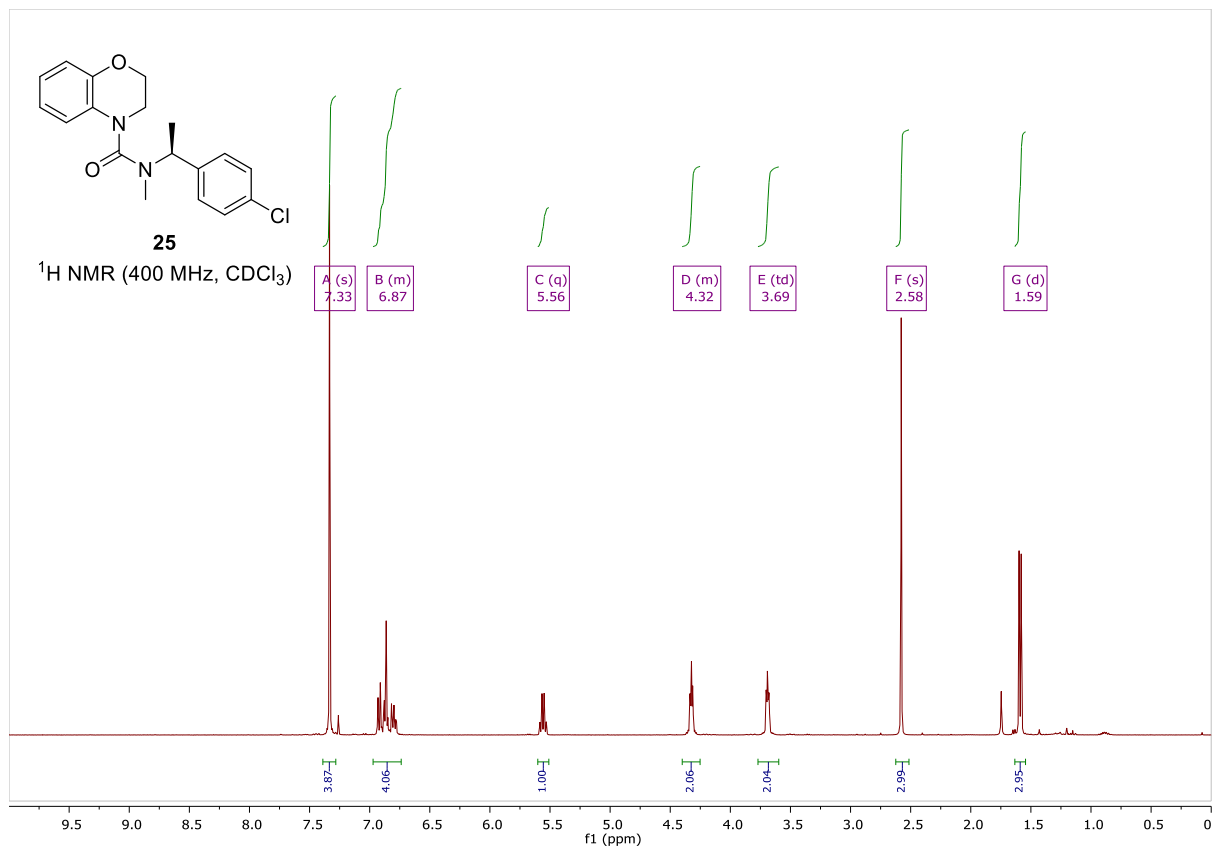
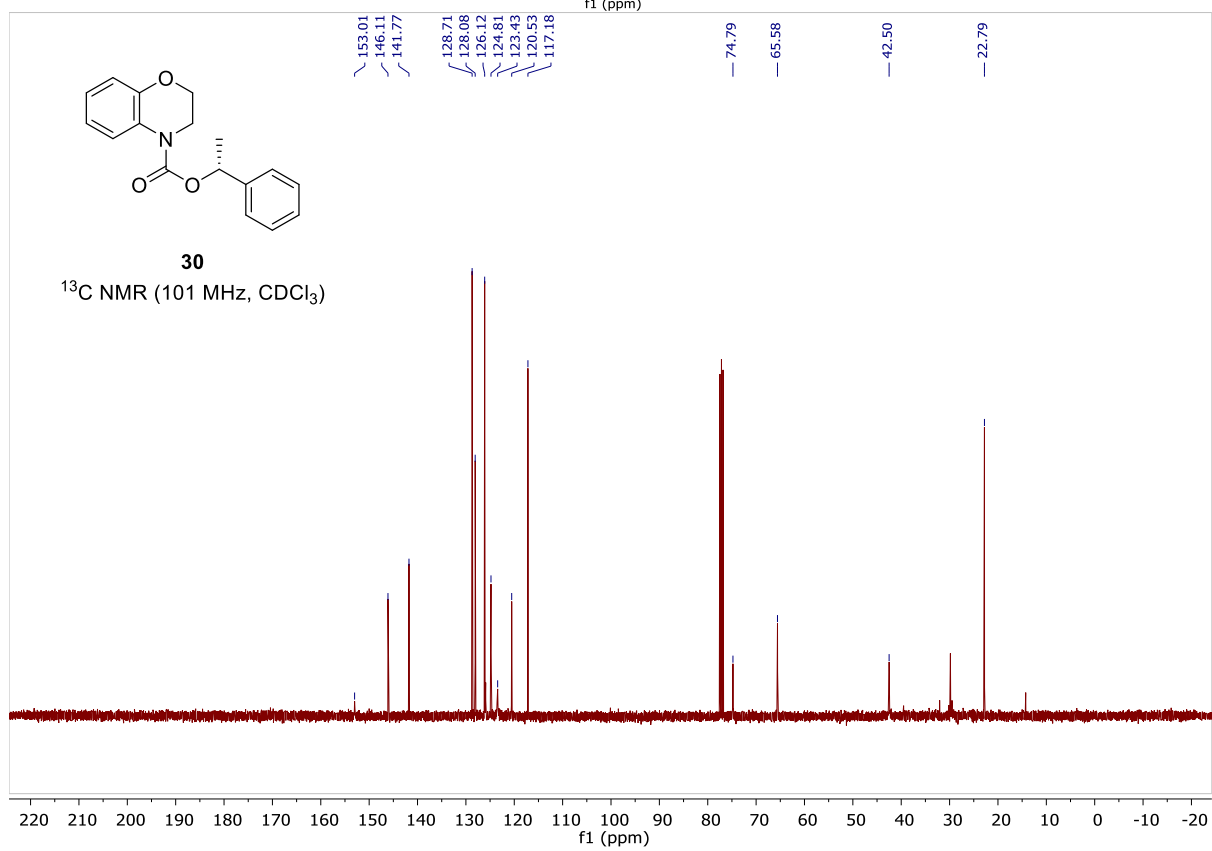
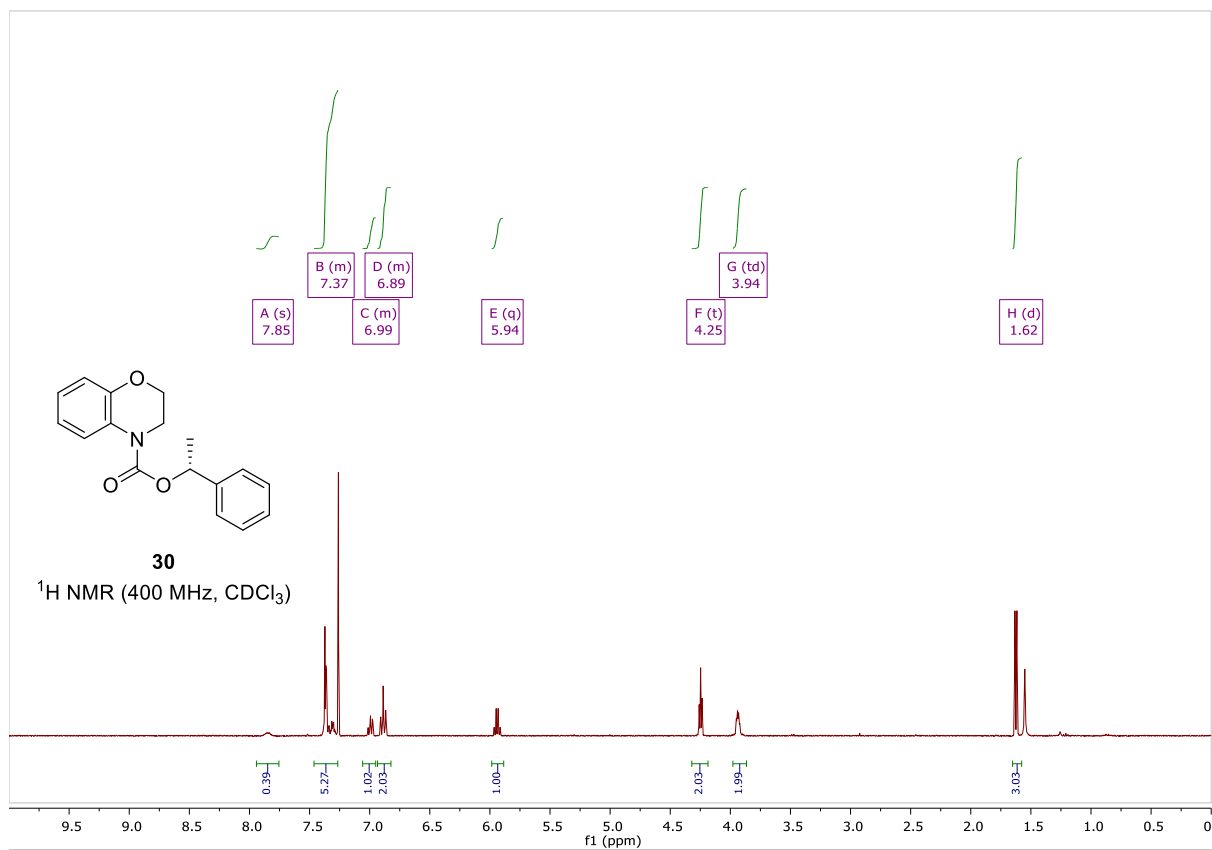


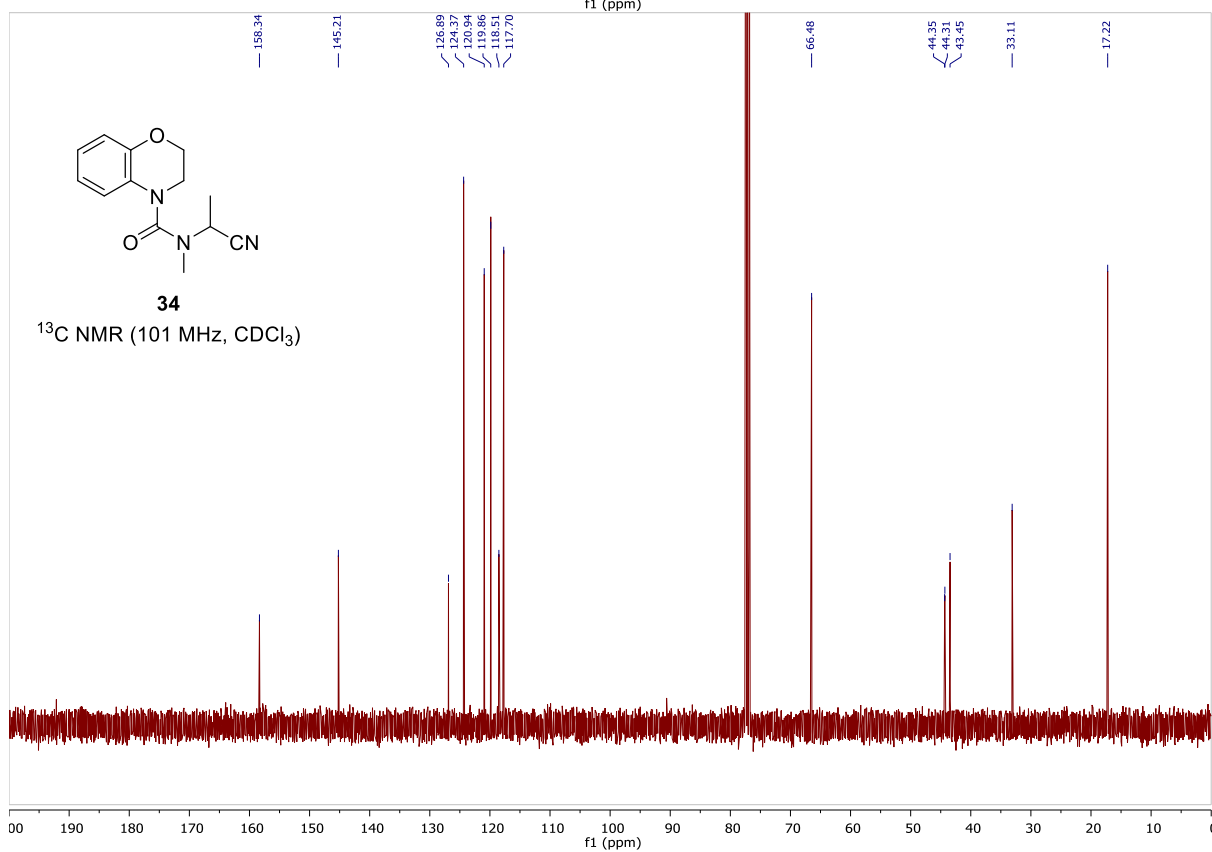
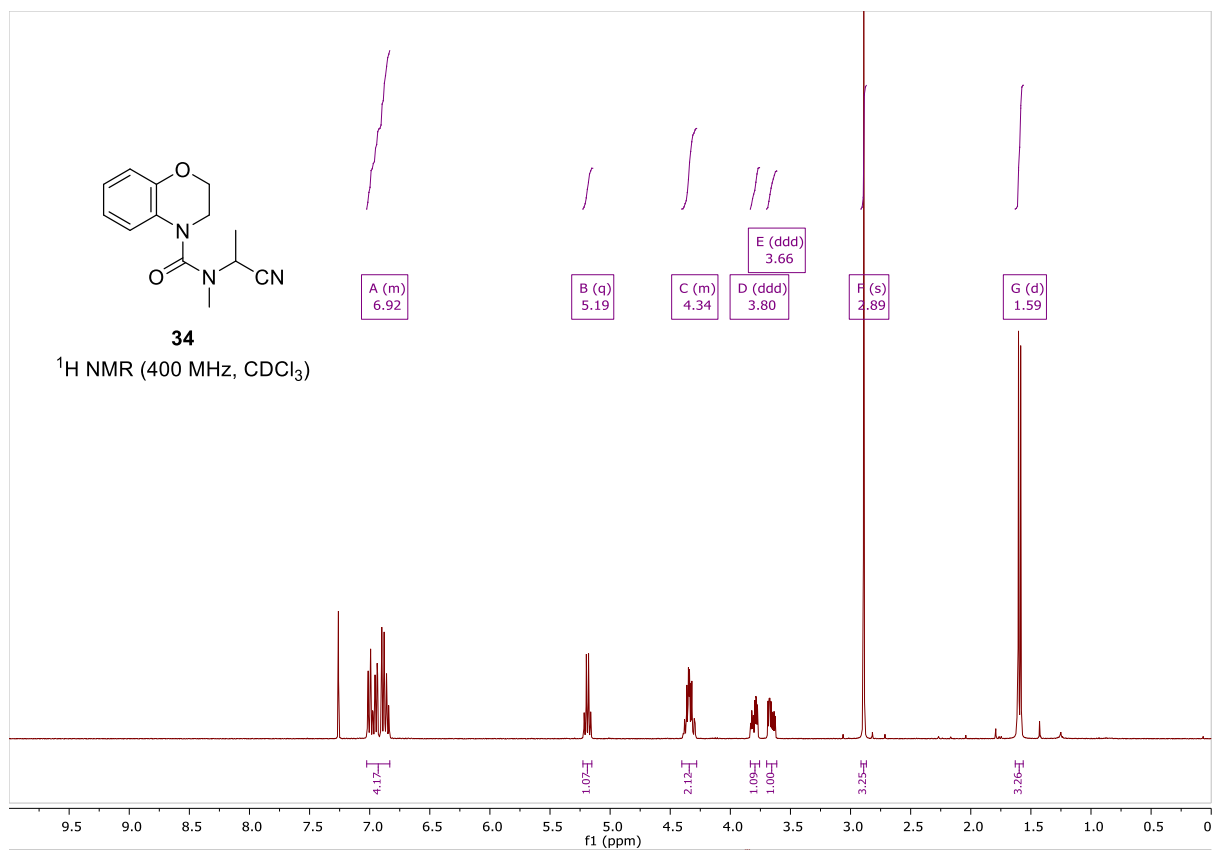
Appendix A. Supplementary Data – NMR Spectra

4.3 Starting Materials – (18), (25), (30), (34)

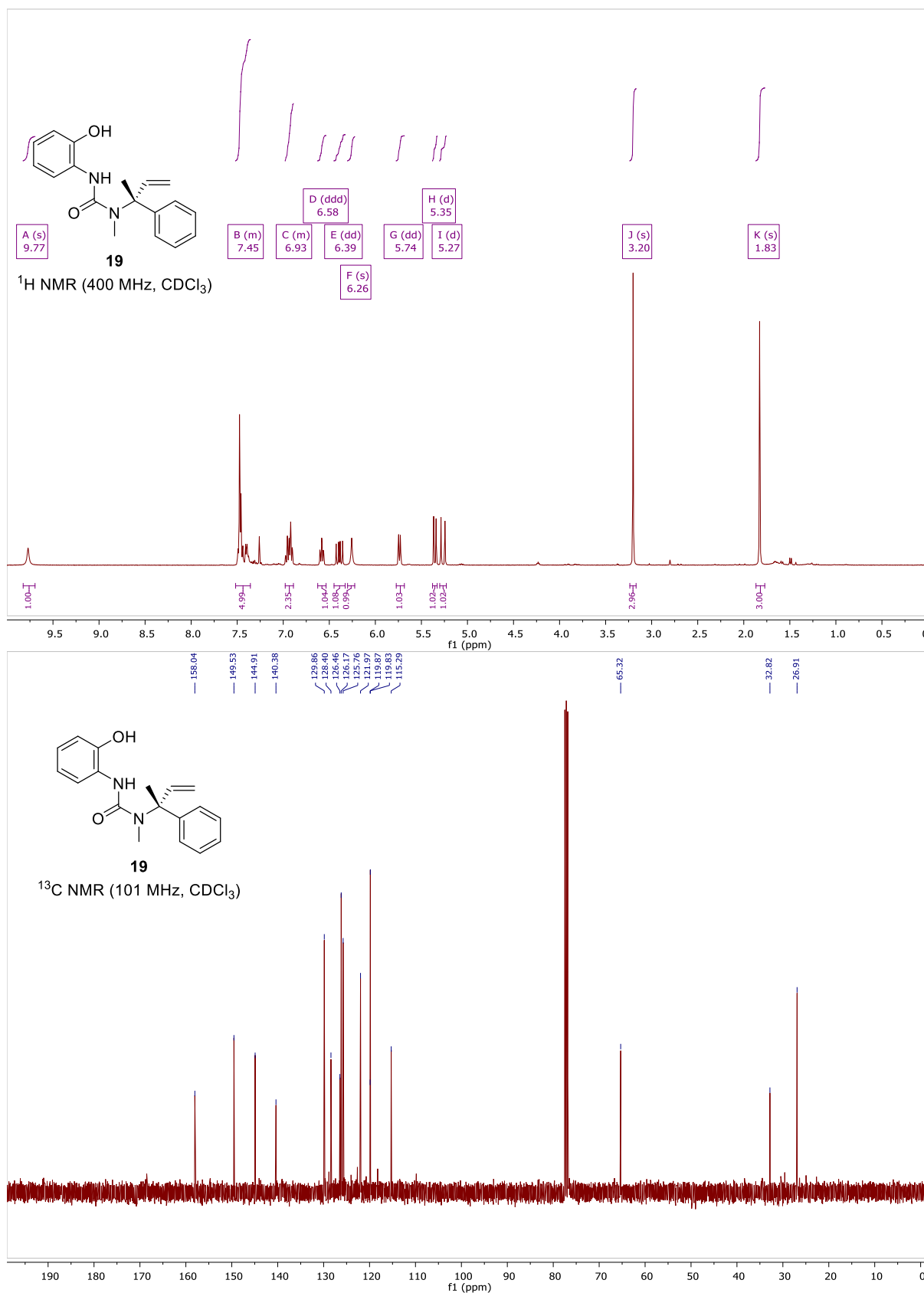


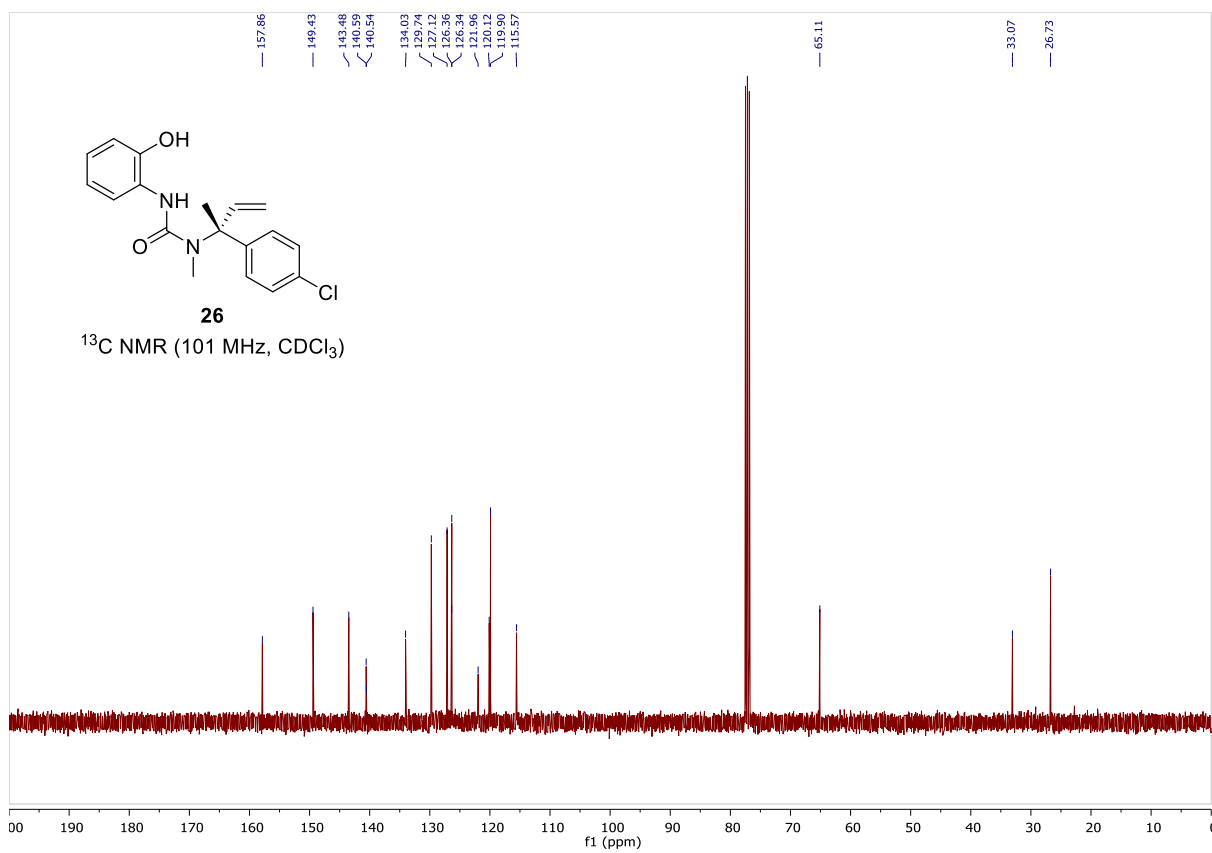
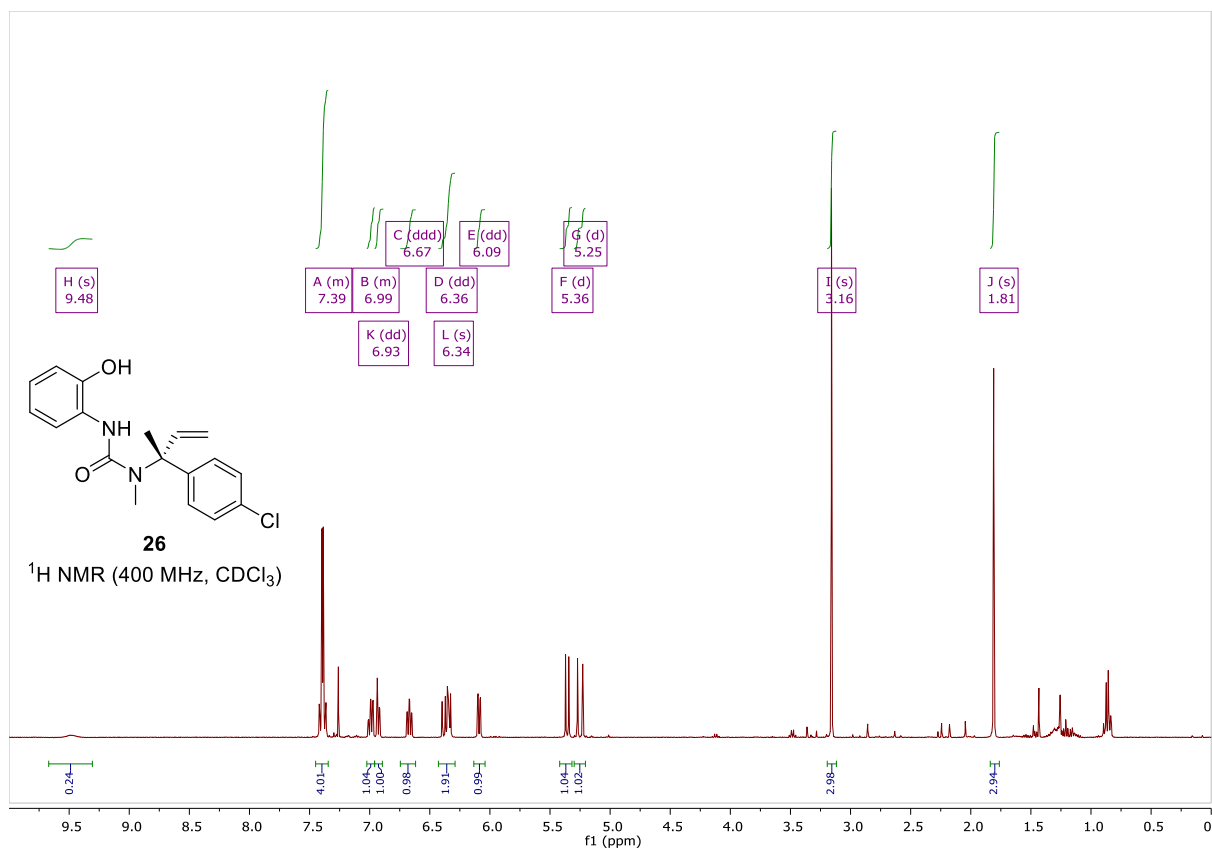


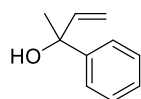




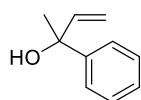
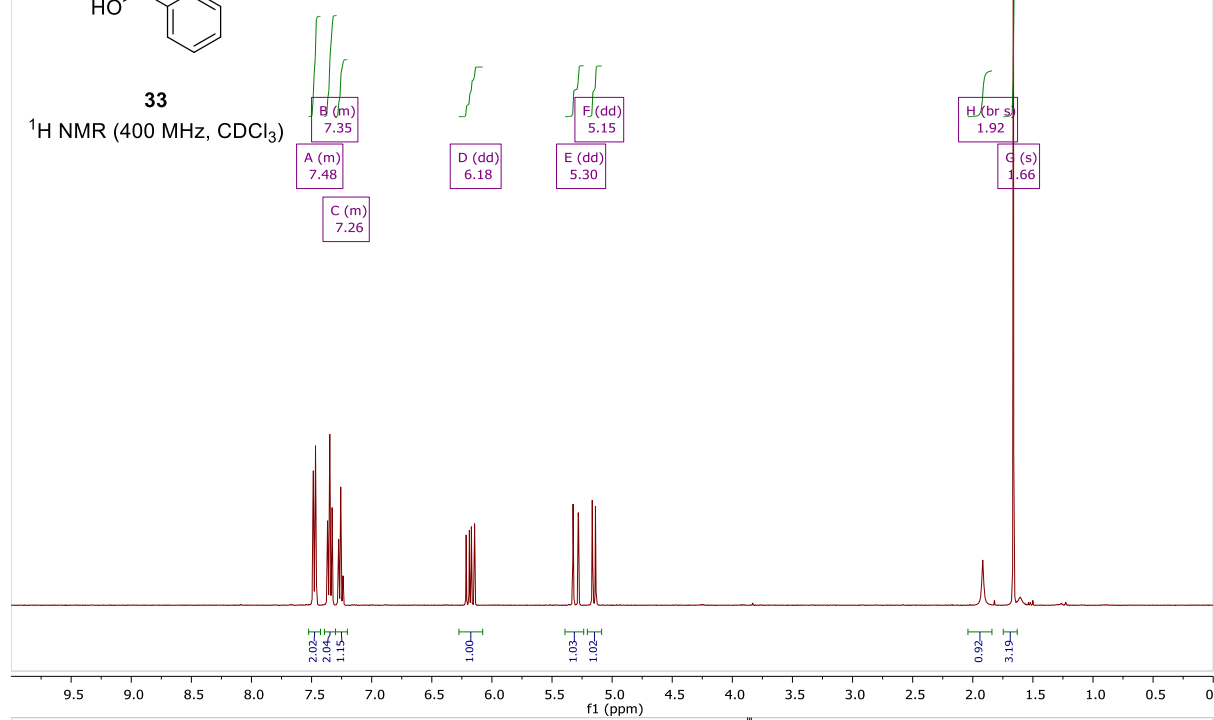
4.4 Vinyl Migration Products – (19), (26), (35), (36)



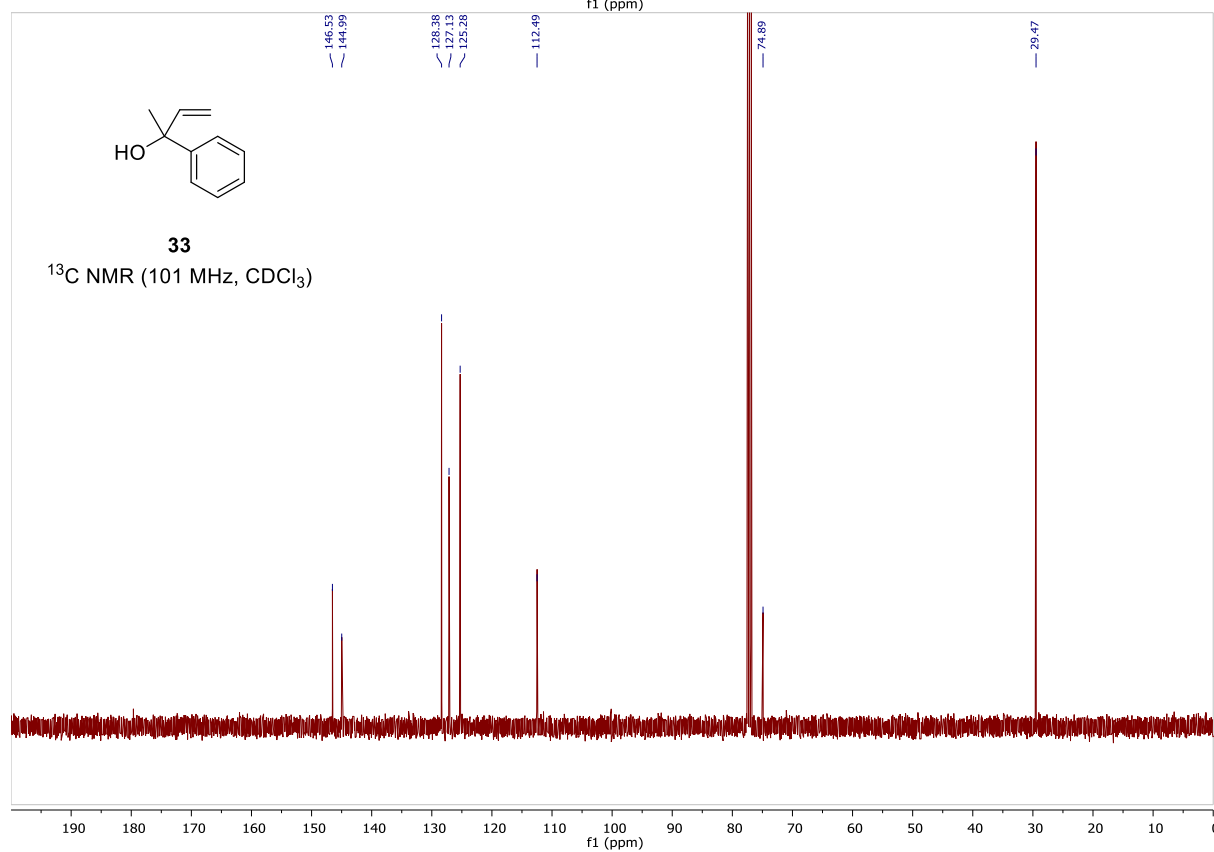




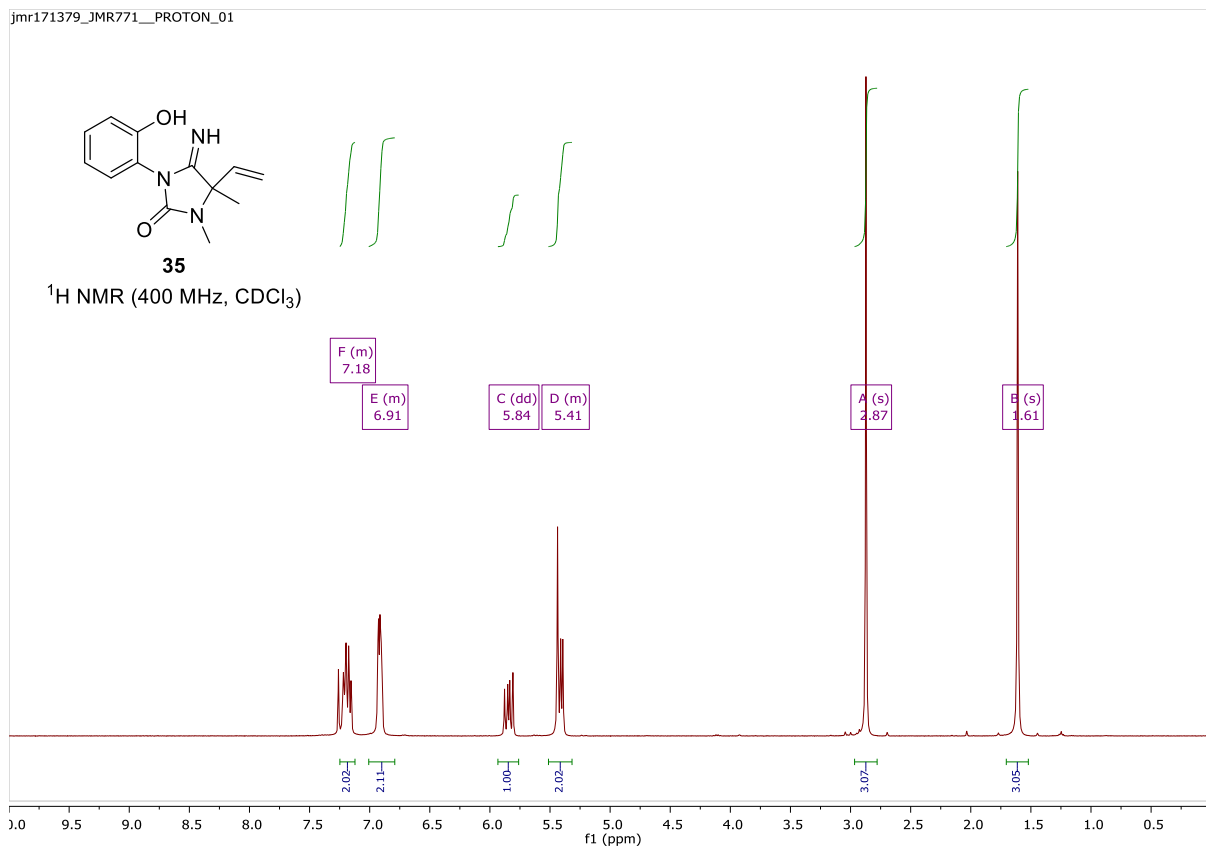
33
¹H NMR (400 MHz, CDCl₃)



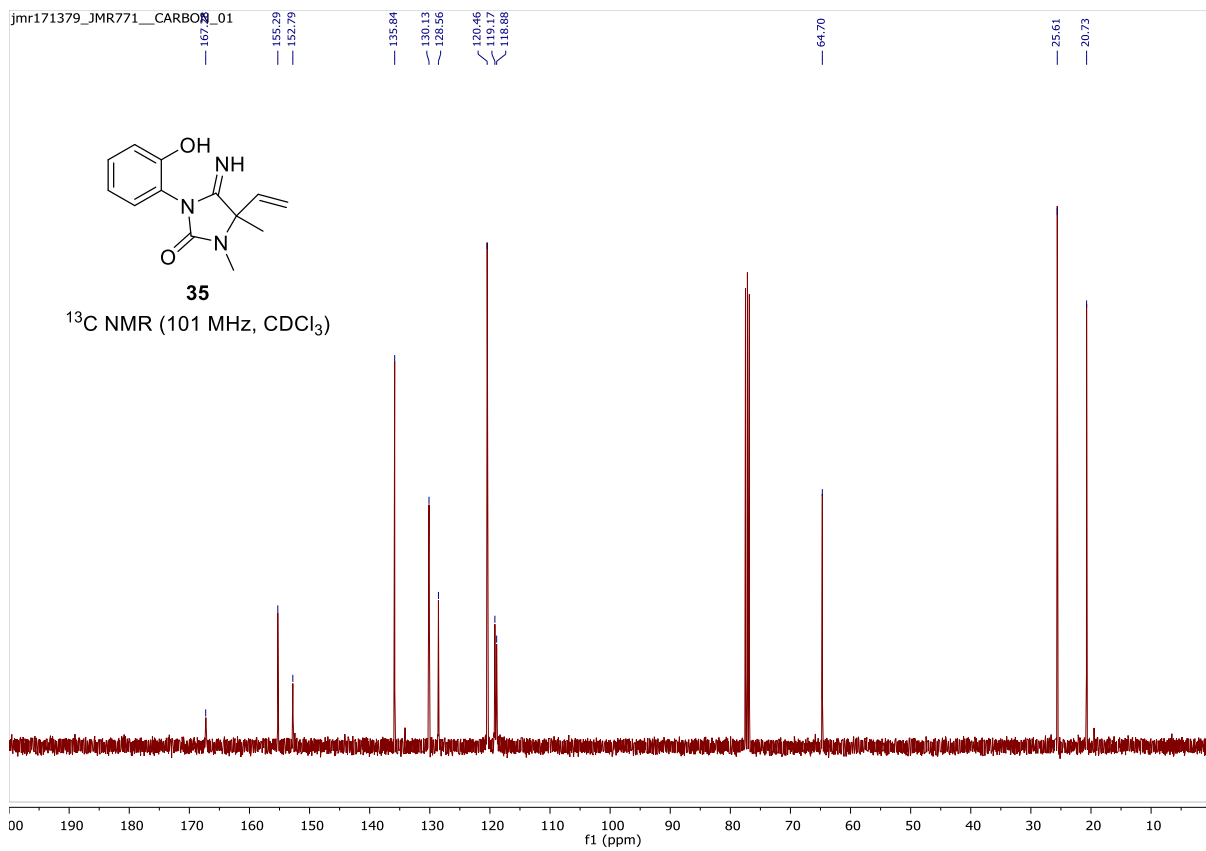
33
¹³C NMR (101 MHz, CDCl₃)

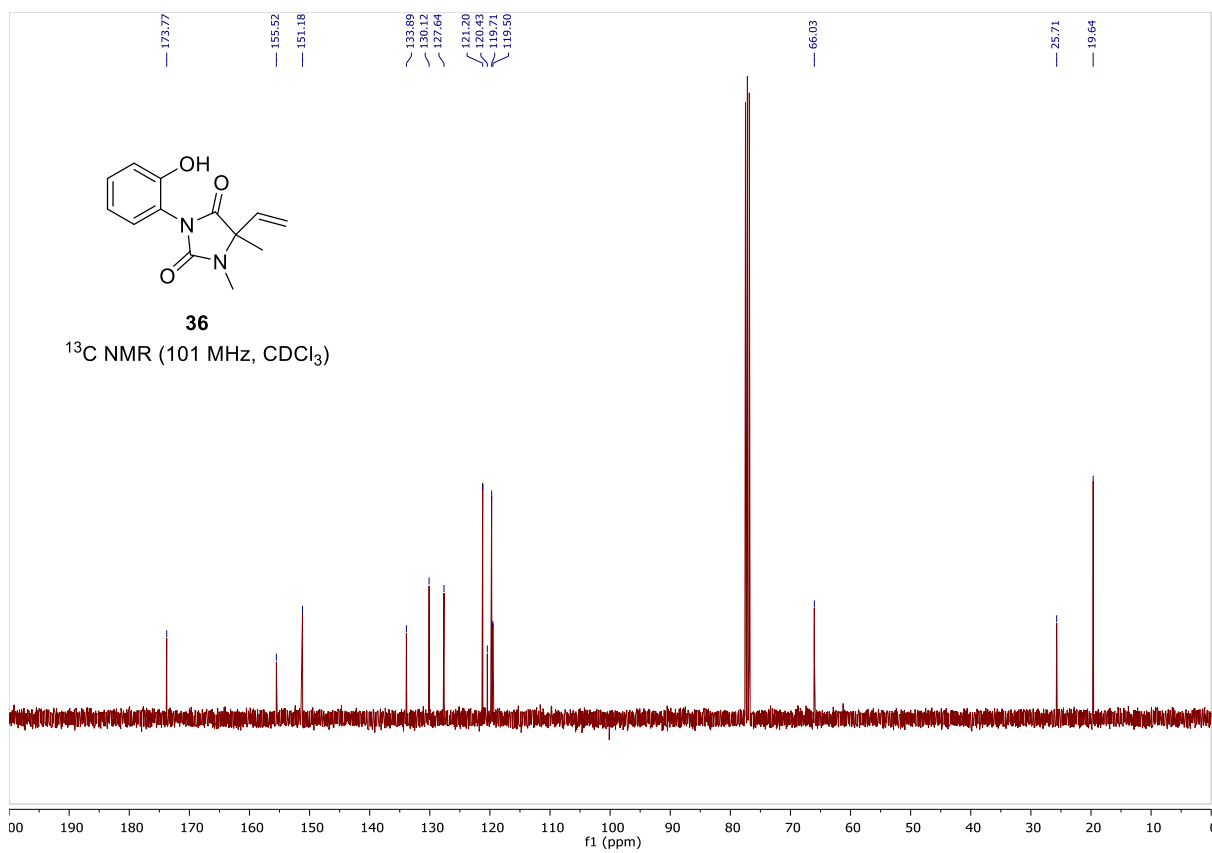
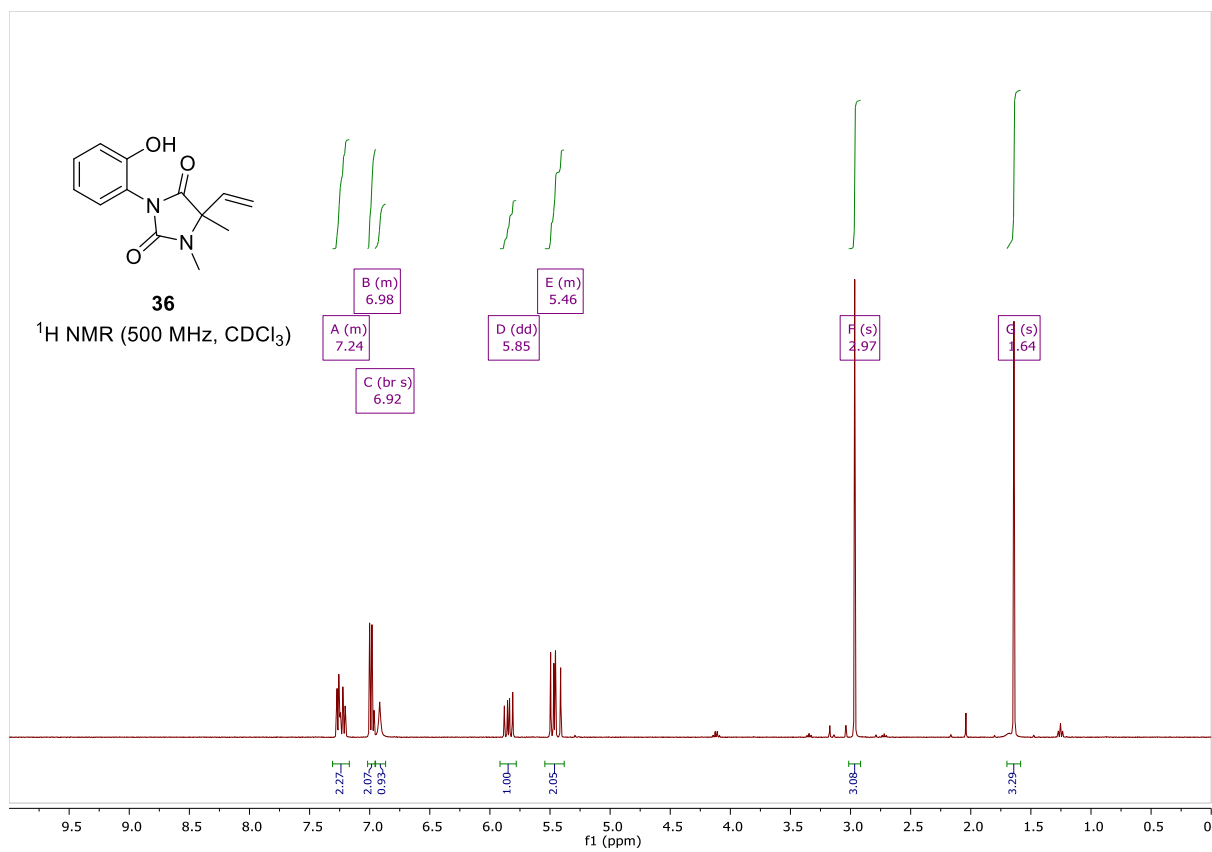


jmr171379_JMR771_PROTON_01

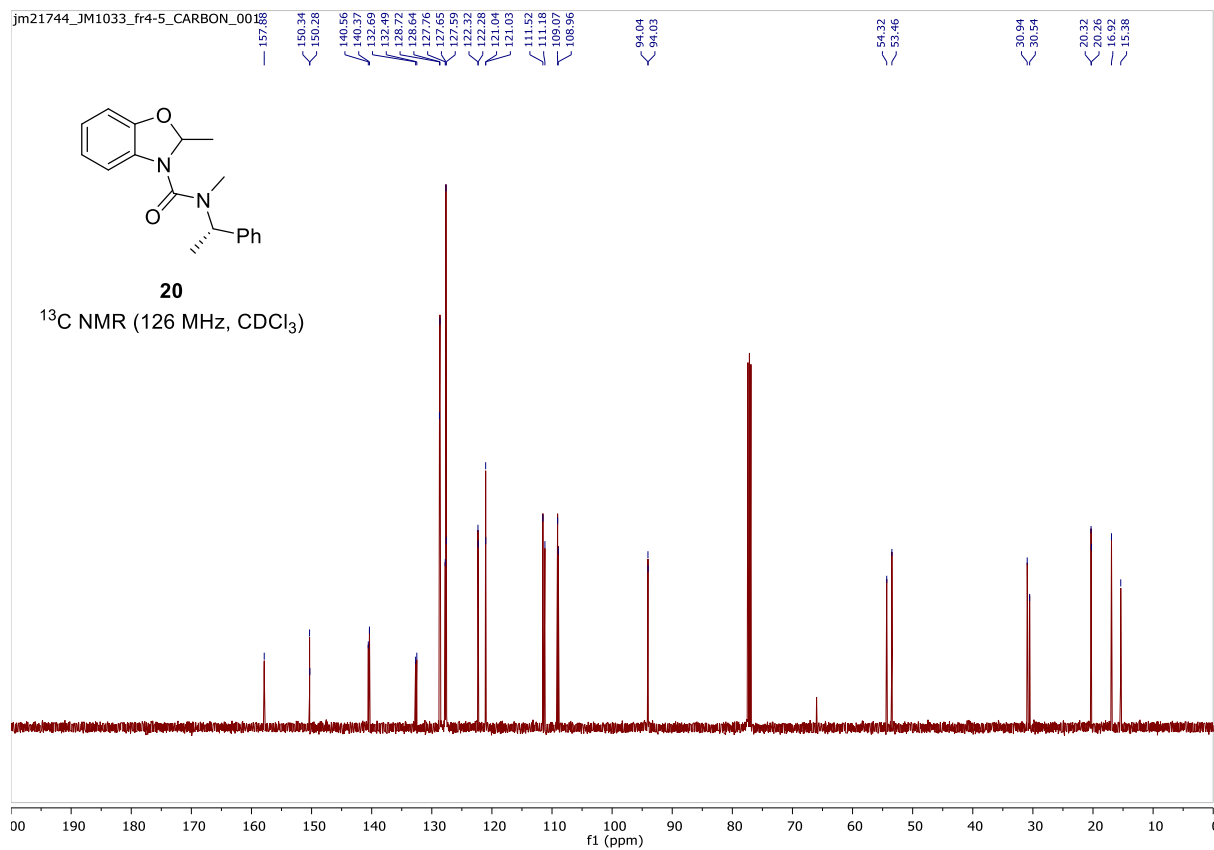
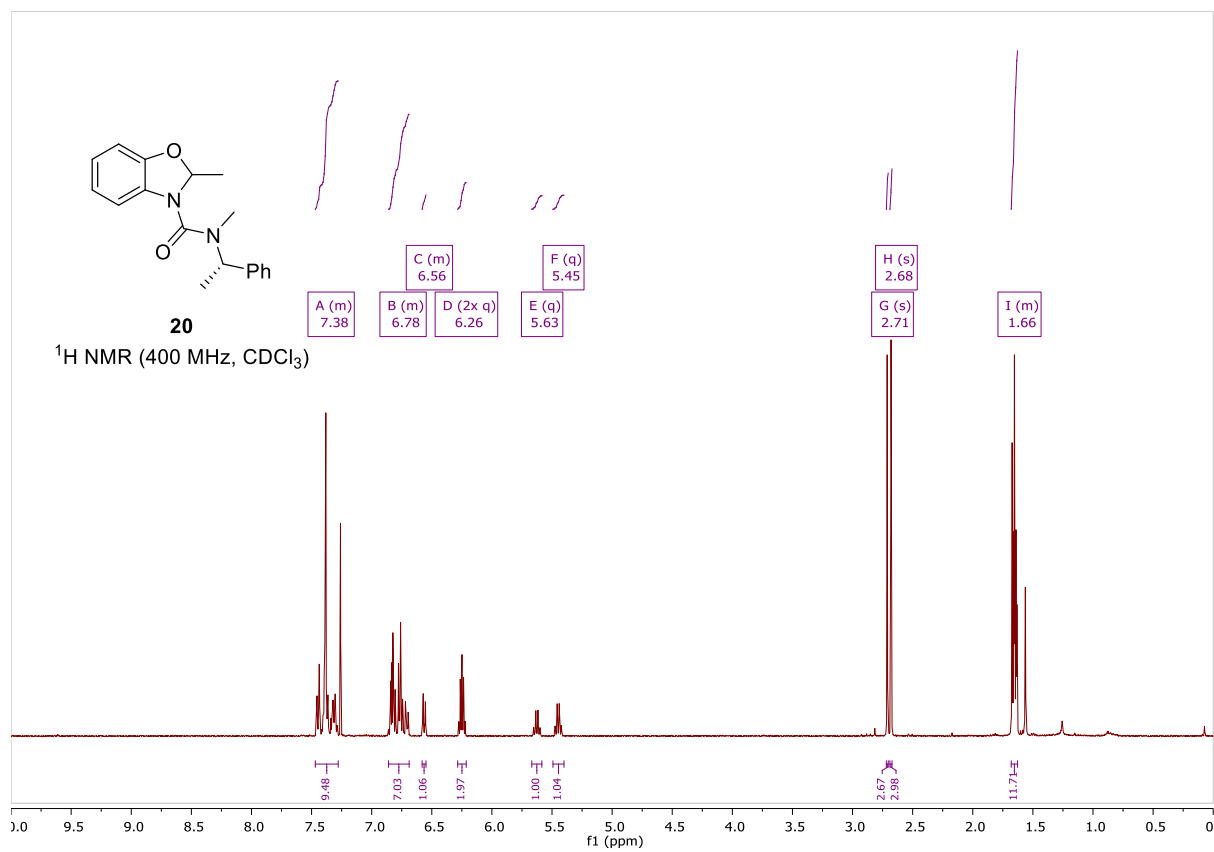


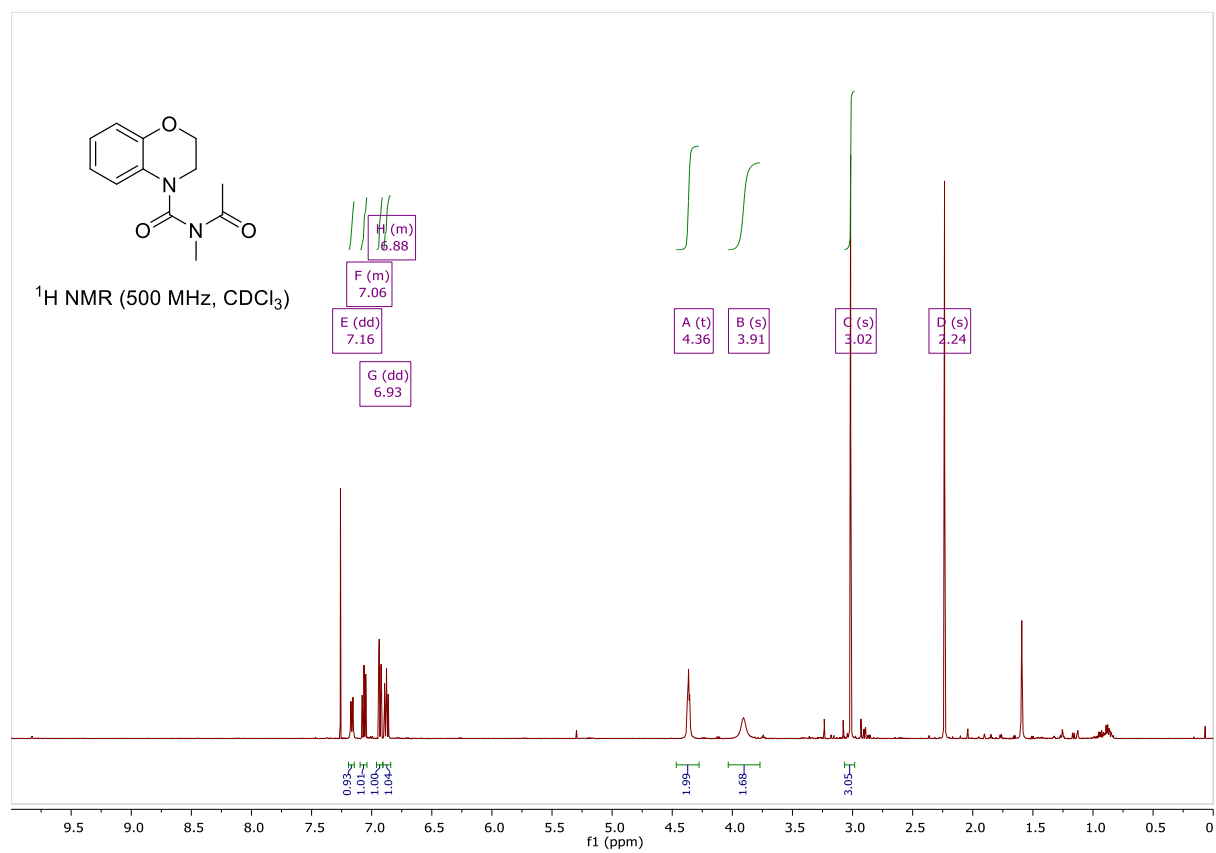
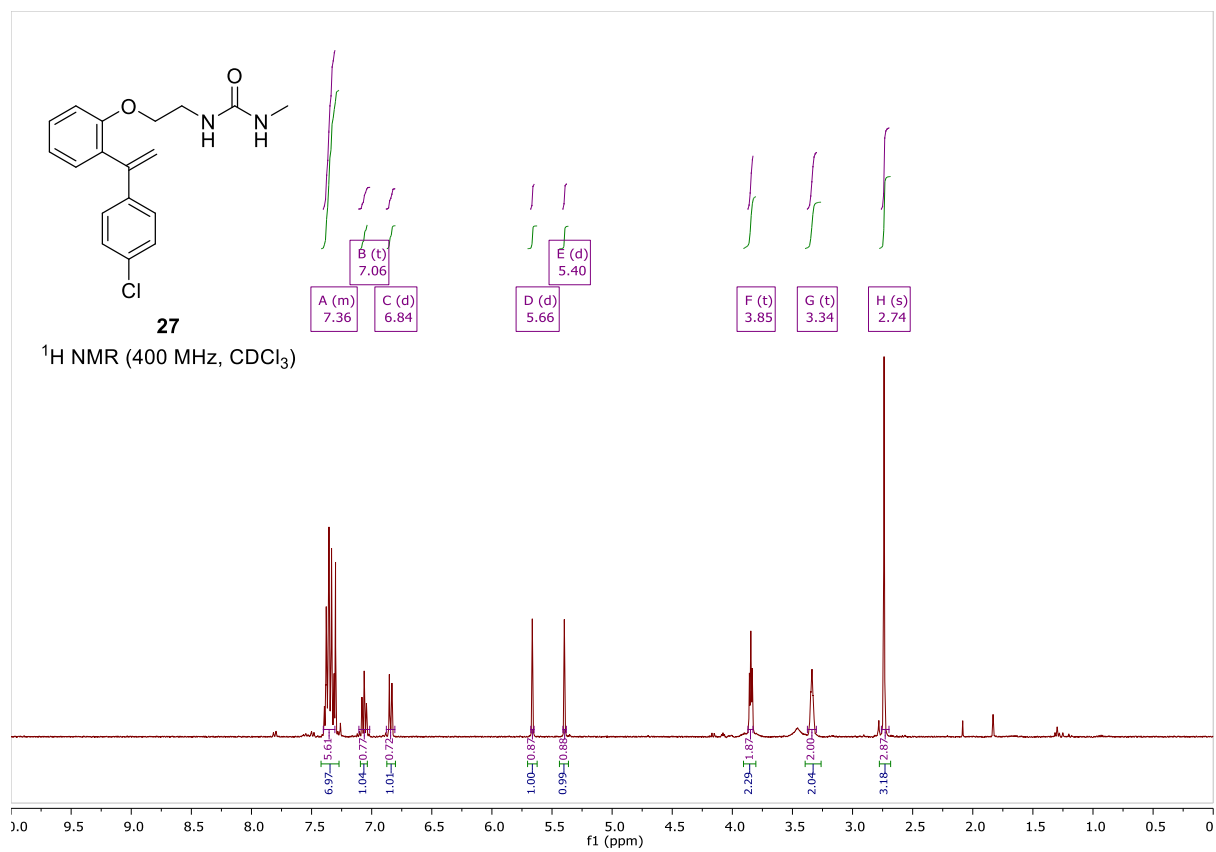
jmr171379_JMR771_CARBON_01

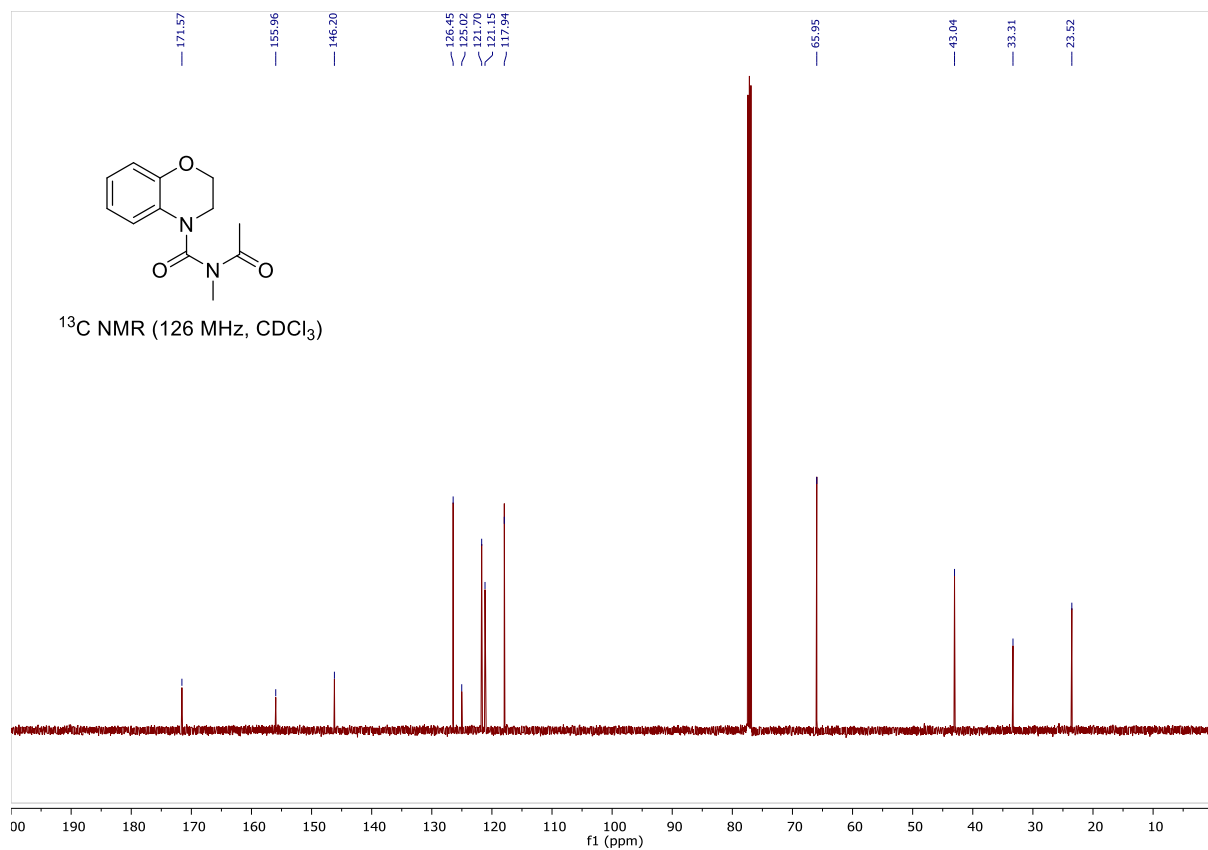




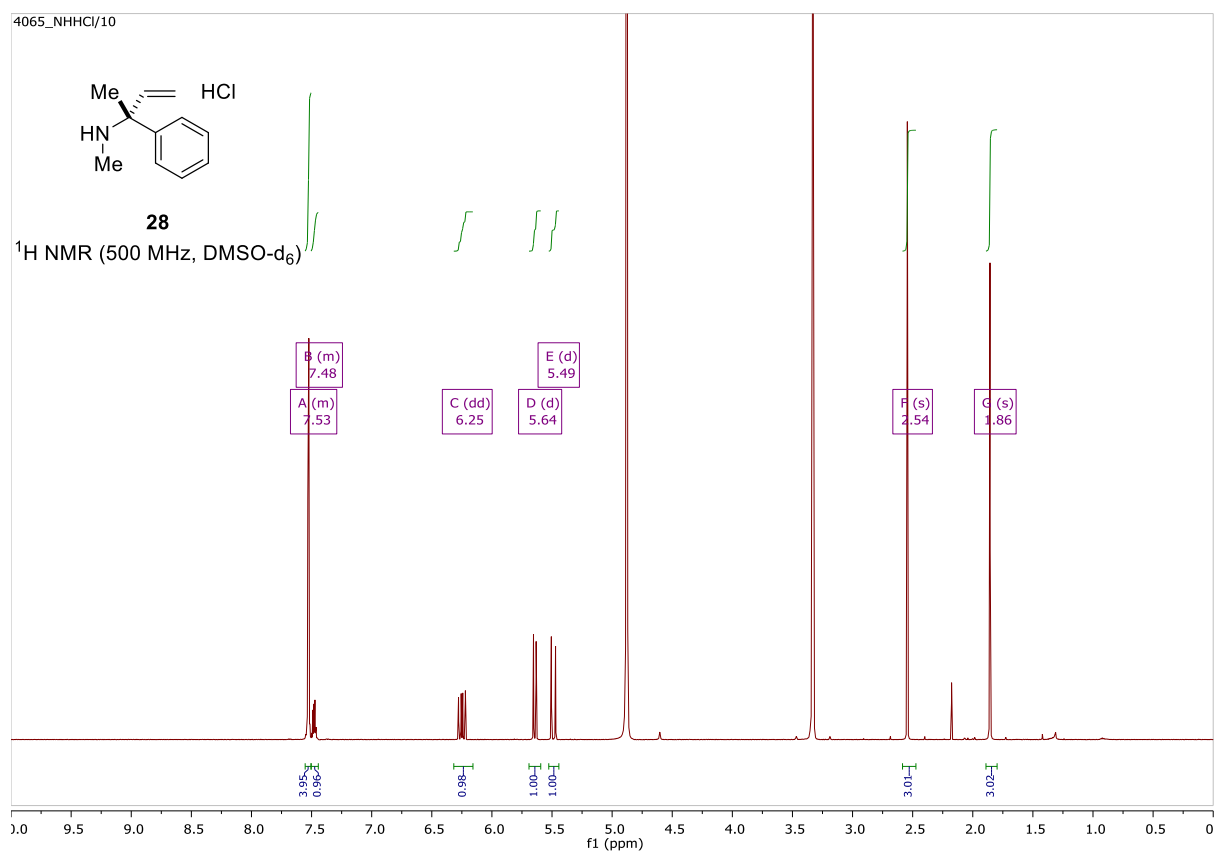
4.5 Side Products – (20), (27)

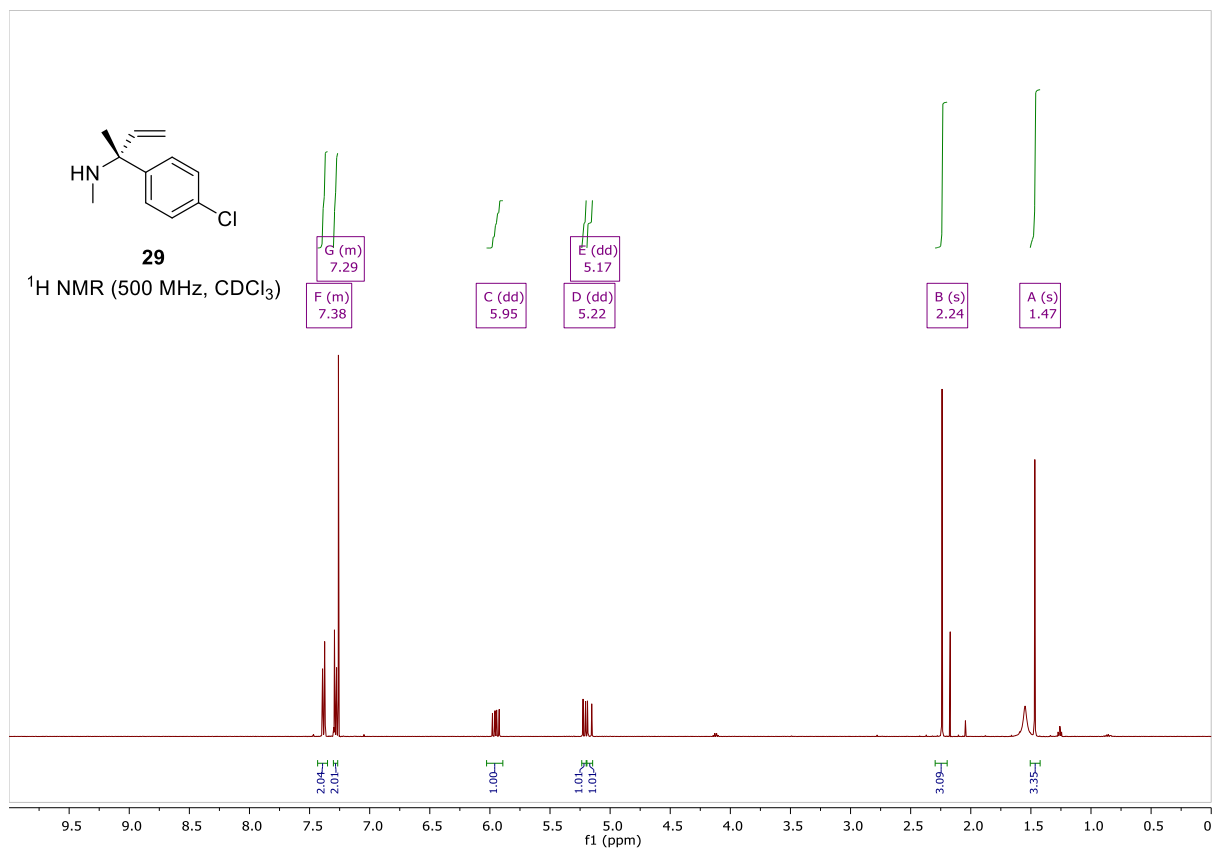
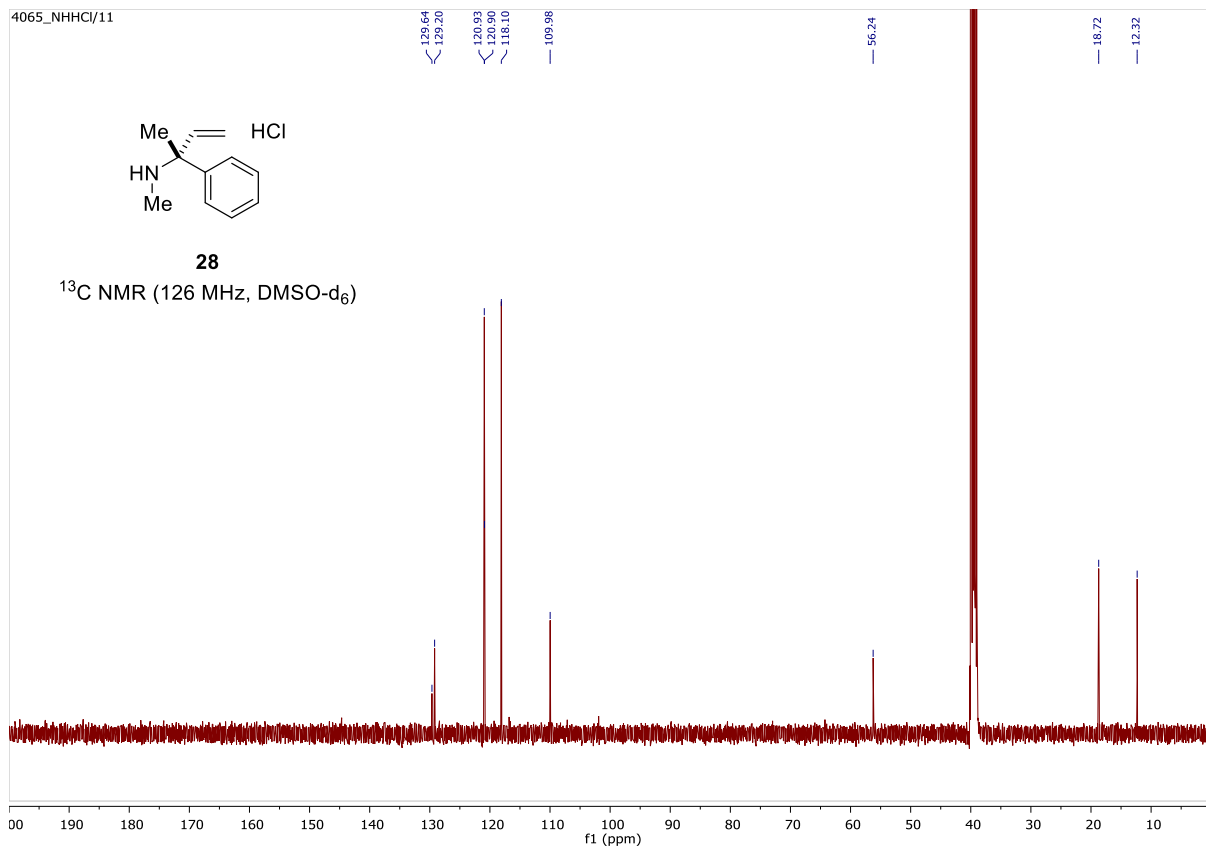


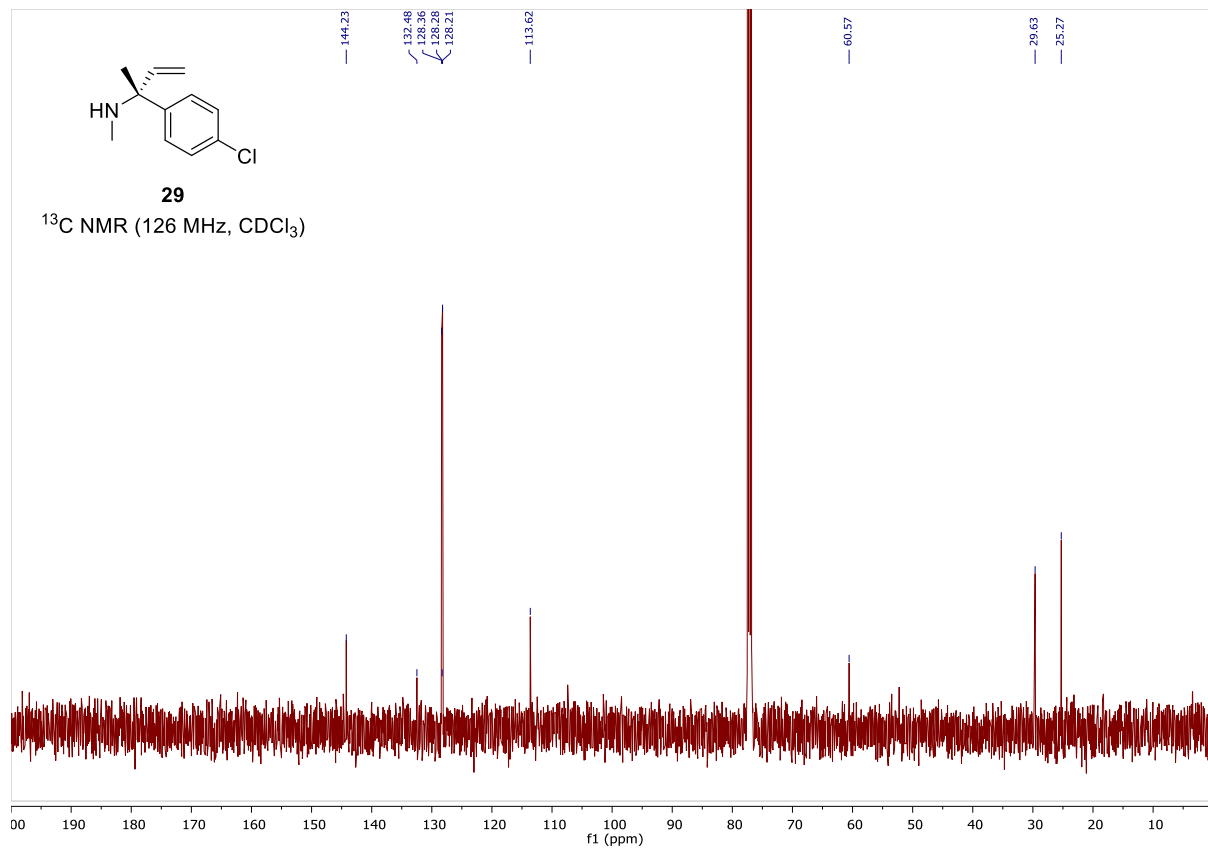




4.6 Methanolysis Products – (28), (29)

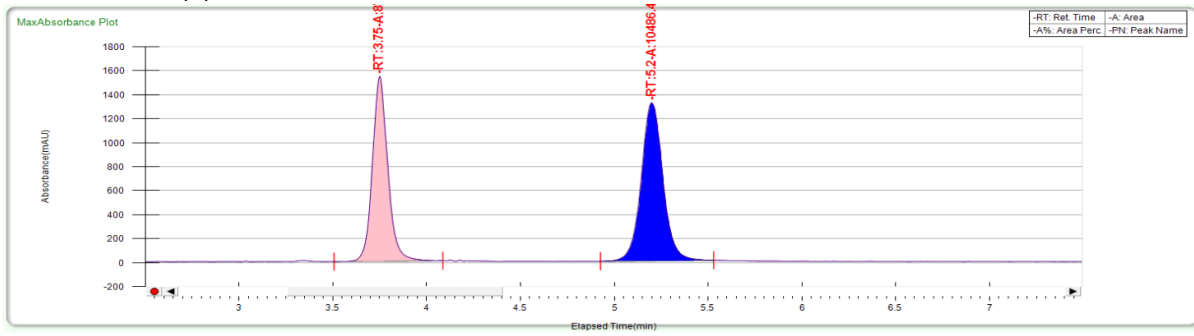




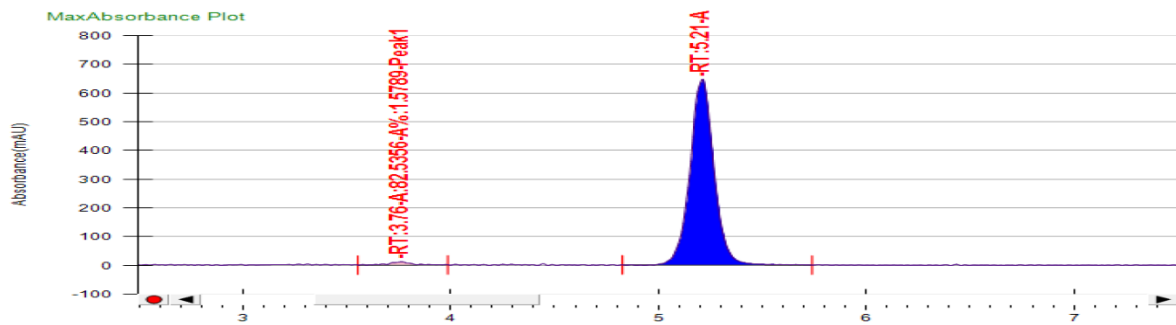


HPLC Traces

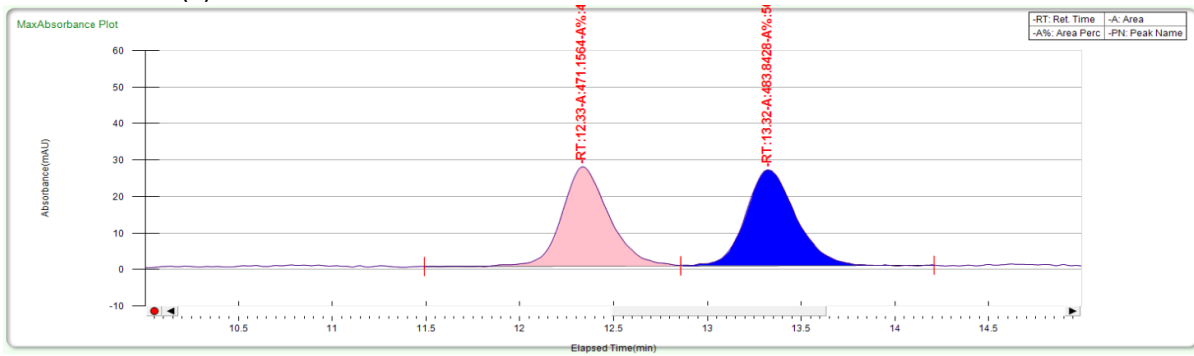
HPLC trace for (±)-18



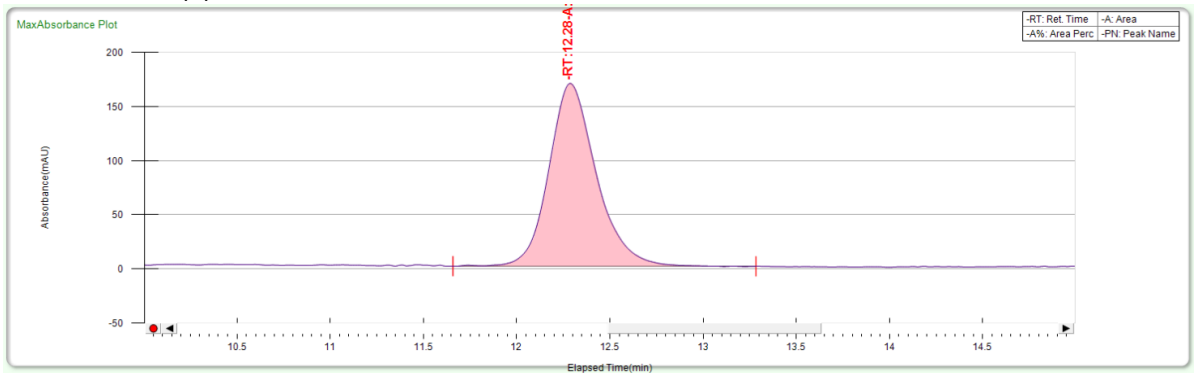
HPLC trace for (±)-18



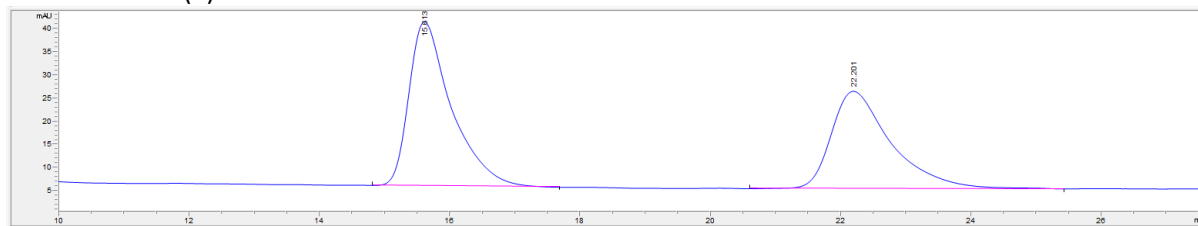
HPLC trace for (±)-19



HPLC trace for (+)-19



HPLC trace for (\pm)-**33**



HPLC trace for enantioenriched reaction **33**

