



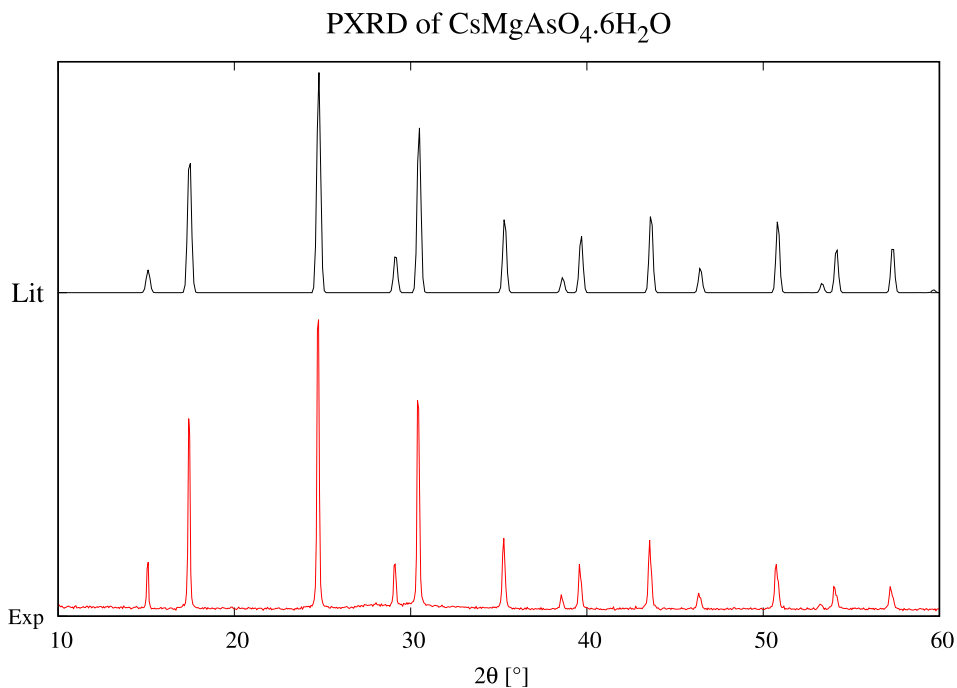
Supplementary material: Parallel-mode EPR spectra of the hexaaqua manganese(II) Ion in tetrahedral symmetry

Margrete Juel Henriksen^{Ⓢ*},^a, Jesper Bendix[Ⓢ]^a and Høgni Weihe[Ⓢ]^a

^a Department of Chemistry, University of Copenhagen, Universitetsparken 5,
DK-2100 Copenhagen, Denmark
E-mail: mnr410@alumni.ku.dk (M. Juel Henriksen)

Not yet published

* Corresponding author.



Supplementary Figure S1. Powder X-ray diffractogram of Cs[Mg(H₂O)₆]AsO₄, measured experimentally (red), obtained from literature (black) [1].

References

- [1] M. Weil, *Acta Crystallogr. E*, 2009, **65**, i2.