



Preliminary communication

Hypsochlorins

Simon Larsen^{Ⓜ, a}, Jeanet Conradie^{Ⓜ, a, b}, Nicolas Desbois^{Ⓜ, c}, Claude Philippe Gros^{Ⓜ, *, c}
and Abhik Ghosh^{Ⓜ, *, a}

^a Department of Chemistry, UiT – The Arctic University of Norway, Tromsø N-9037, Norway

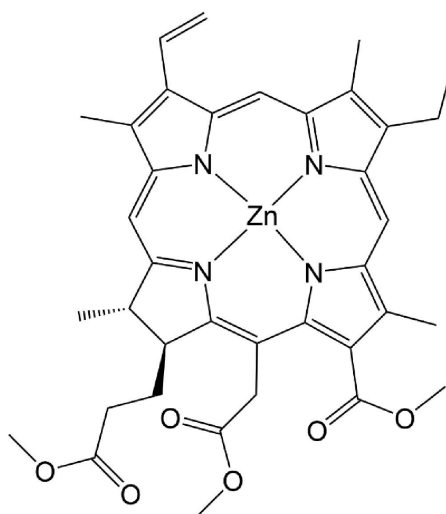
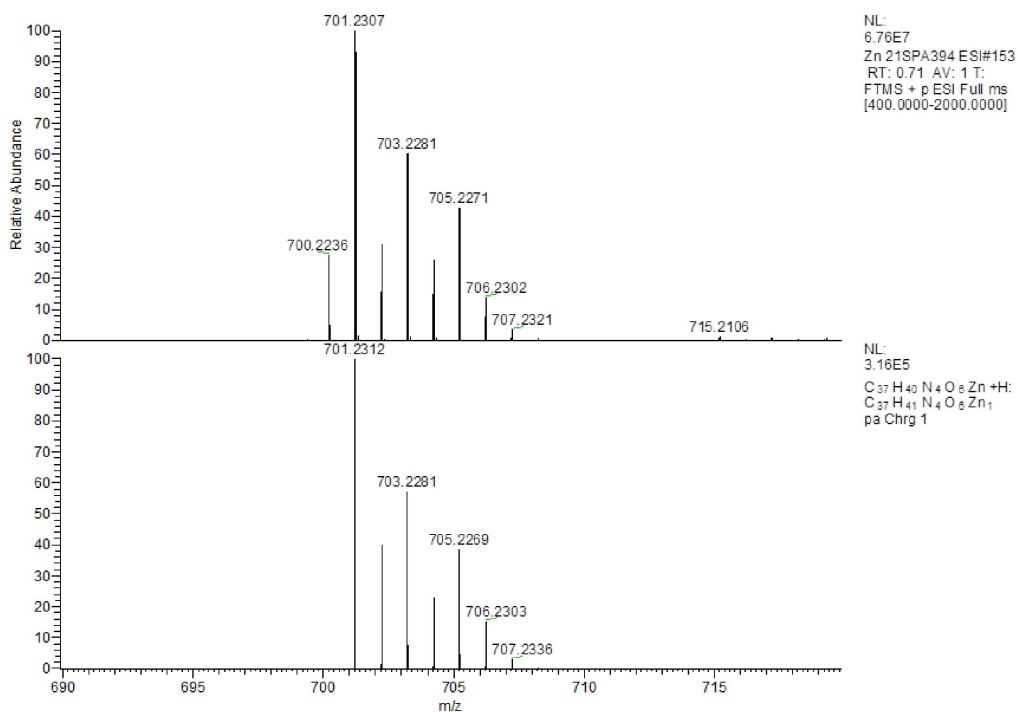
^b Department of Chemistry, University of the Free State, Bloemfontein 9300, Republic of South Africa

^c Institut de Chimie Moléculaire de l'Université de Bourgogne (ICMUB), UMR CNRS 6302, Université de Bourgogne, 9 Avenue Alain Savary, BP 47870, 21078 Dijon Cedex, France

E-mails: claude.gros@u-bourgogne.fr (C. P. Gros), abhik.ghosh@uit.no (A. Ghosh)

* Corresponding authors.

A. Mass spectra

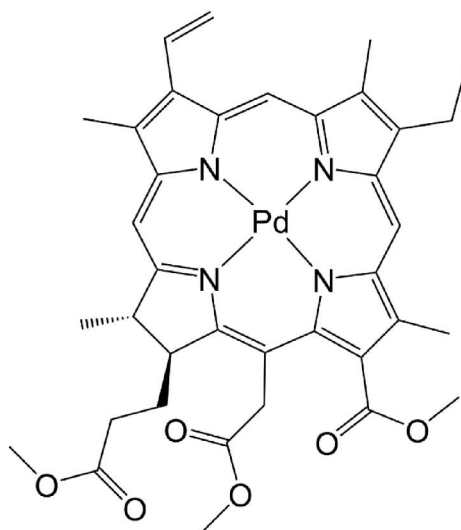
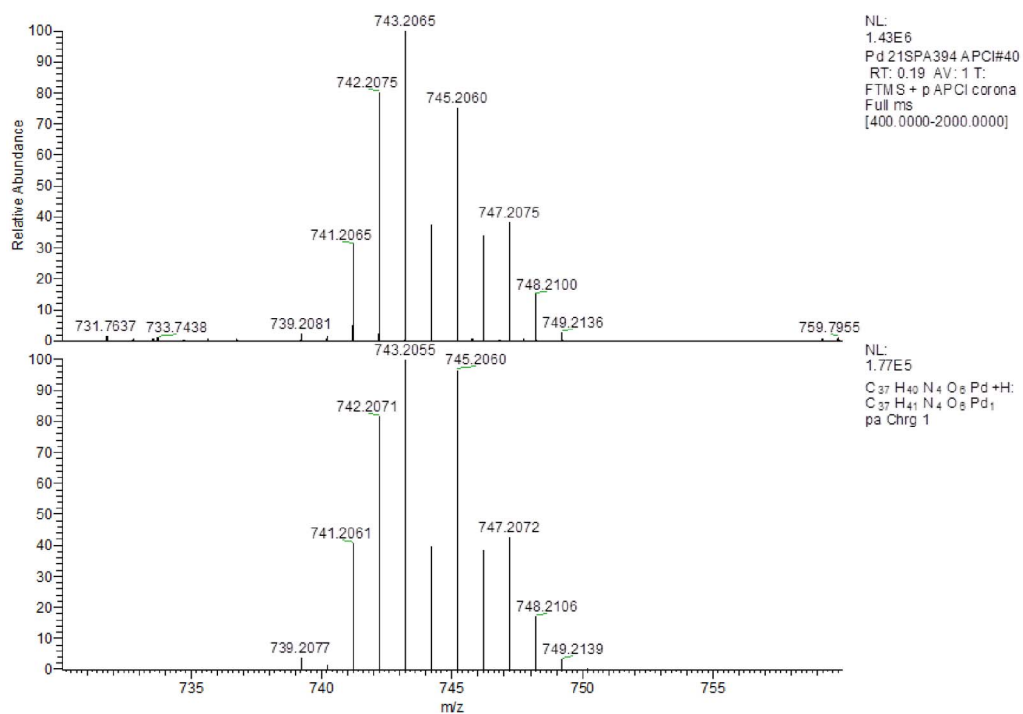


Chemical formula: C₃₇H₄₀N₄O₆Zn

Exact mass: 700.22

Molecular weight: 702.13

Supplementary Figure S1. ESI-MS of Zn[Chl-e].

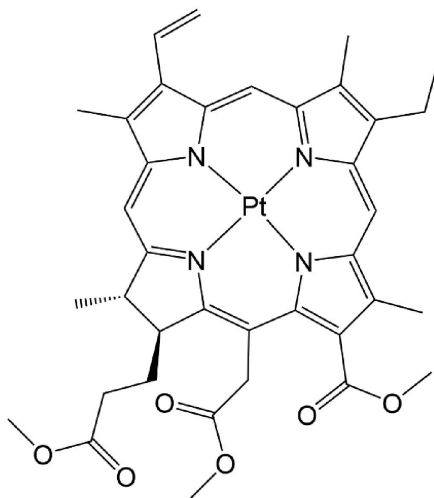
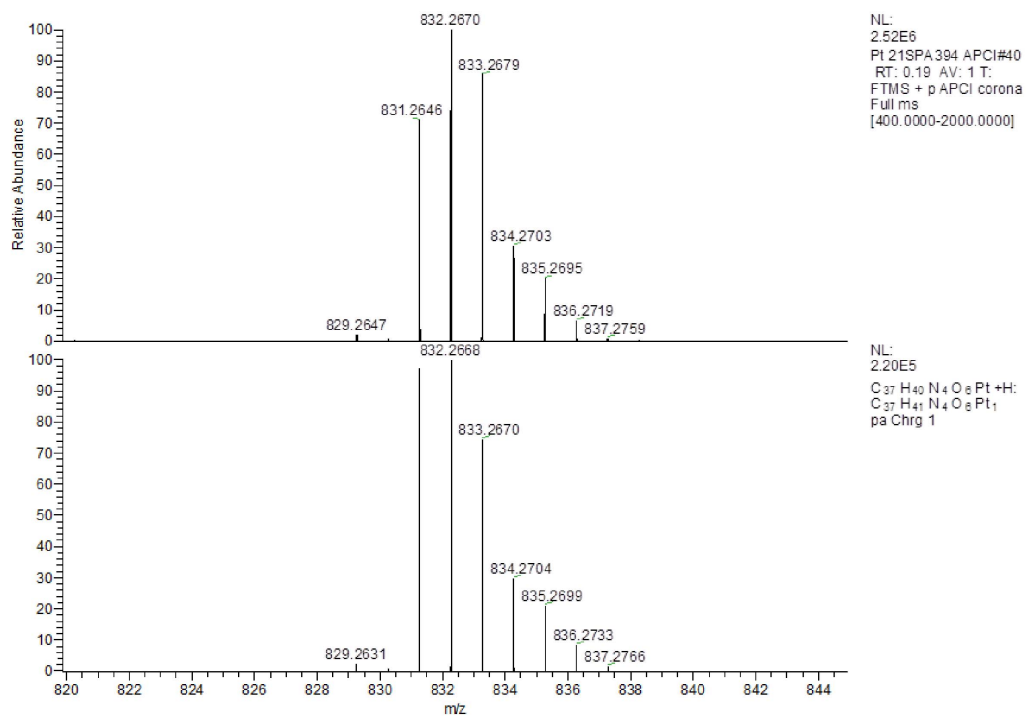


Chemical formula: C₃₇H₄₀N₄O₆Pd

Exact mass: 742.20

Molecular weight: 743.17

Supplementary Figure S2. APCI-MS of Pd[Chl-e].

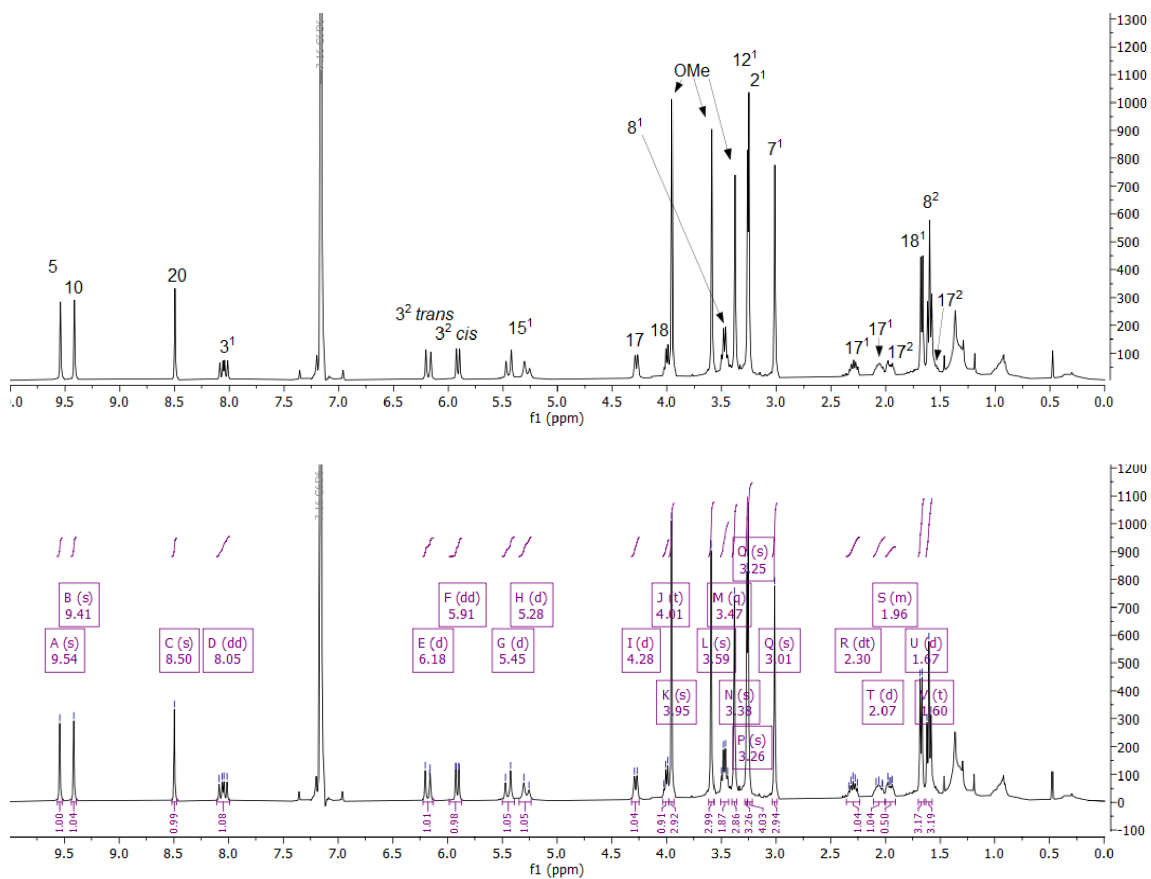


Chemical formula: C₃₇H₄₀N₄O₆Pt

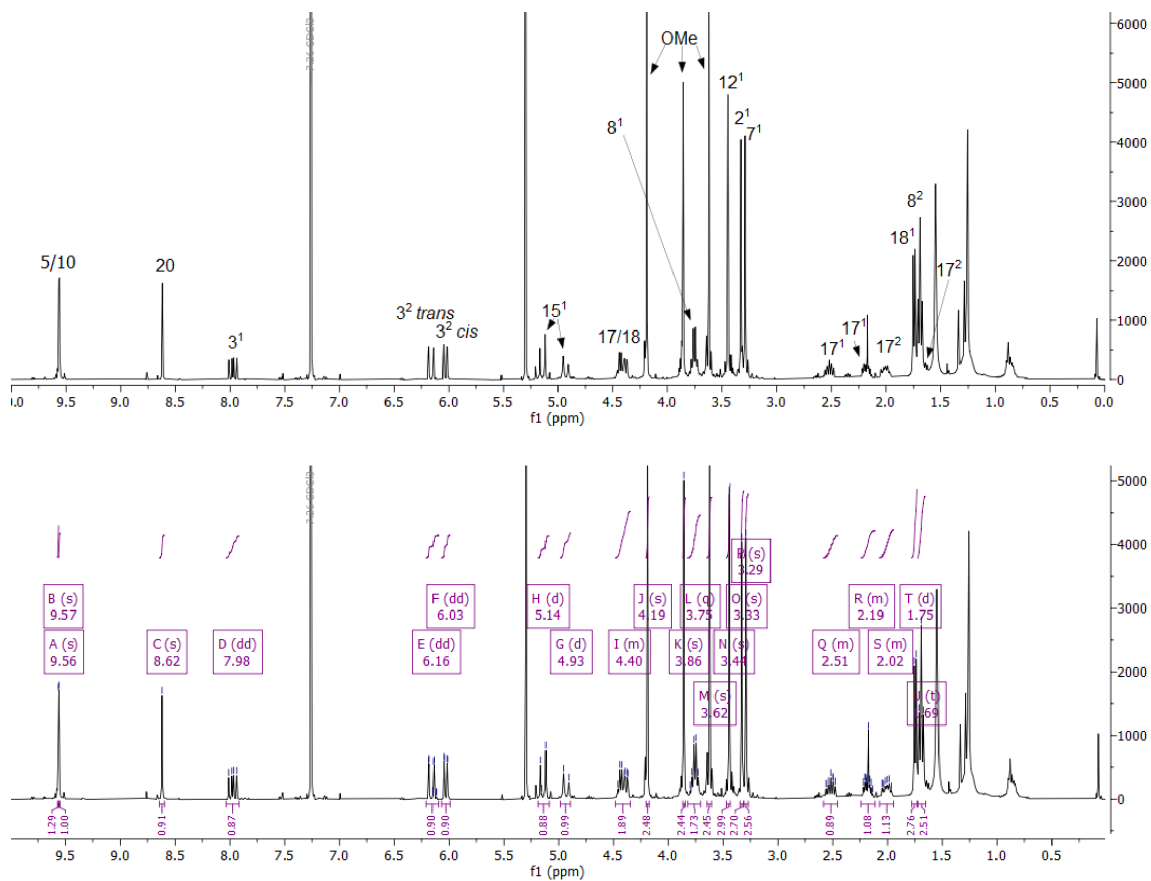
Exact mass: 831.26

Molecular weight: 831.83

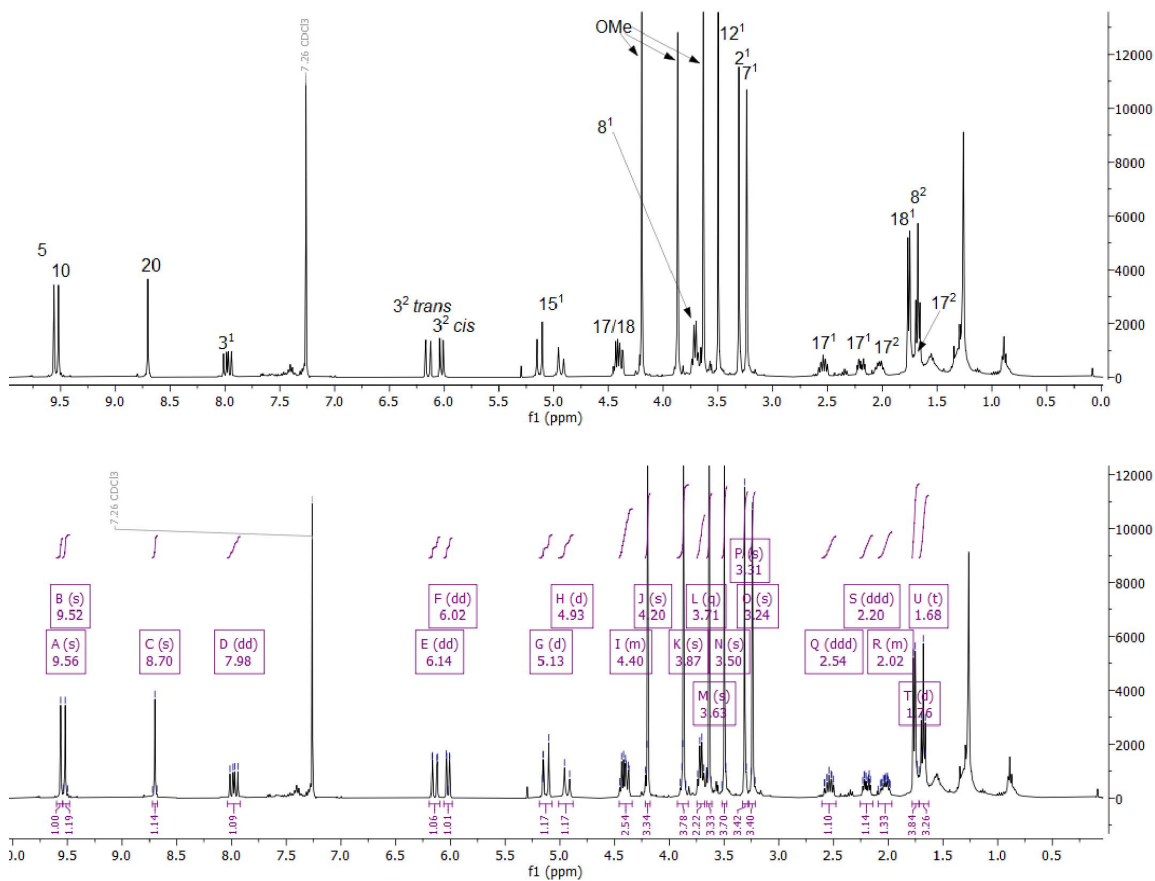
Supplementary Figure S3. APCI-MS of Pt[Chl-e].

B. ^1H NMR spectra

Supplementary Figure S4. ^1H NMR spectrum (400 MHz) of Zn[Chl-e]; see Scheme 1 of the main text for atom numbering.



Supplementary Figure S5. ¹H NMR spectrum (400 MHz) of Pd[Chl-e]; see Scheme 1 of the main text for atom numbering.



Supplementary Figure S6. ¹H NMR spectrum (400 MHz) of Pt[Chl-e]; see Scheme 1 of the main text for atom numbering.

C. Optimized Cartesian coordinates (Å)*Zn[Chl]*

Zn	0.00000000	0.00000000	-0.08240400
C	0.68640400	-0.00431300	-4.33993400
C	0.76362600	-0.07943600	4.30643300
C	1.10293900	-0.01013800	-2.96215000
C	1.11483600	-0.04501300	2.83185500
C	2.41414300	-0.07319900	2.36564800
C	2.42755100	-0.03238700	-2.50694900
C	2.84401500	-0.06689000	1.02676500
C	2.85408400	-0.04890300	-1.18470800
C	4.22581600	-0.08917800	0.61042500
C	4.23014200	-0.07672700	-0.75832700
C	-0.68640400	0.00431300	-4.33993400
C	-0.76362600	0.07943600	4.30643300
C	-1.10293900	0.01013800	-2.96215000
C	-1.11483600	0.04501300	2.83185500
C	-2.41414300	0.07319900	2.36564800
C	-2.42755100	0.03238700	-2.50694900
C	-2.84401500	0.06689000	1.02676500
C	-2.85408400	0.04890300	-1.18470800
C	-4.22581600	0.08917800	0.61042500
C	-4.23014200	0.07672700	-0.75832700
H	1.08041000	-1.03344700	4.74251800
H	1.27797800	0.71791300	4.85089100
H	1.35746500	-0.00982300	-5.19024200
H	3.19866400	-0.10417500	3.11721700
H	3.20402800	-0.03954900	-3.26747200
H	5.07252400	-0.11030900	1.28539400
H	5.08166800	-0.08528900	-1.42777000
H	-1.08041000	1.03344700	4.74251800
H	-1.27797800	-0.71791300	4.85089100
H	-1.35746500	0.00982300	-5.19024200
H	-3.19866400	0.10417500	3.11721700
H	-3.20402800	0.03954900	-3.26747200
H	-5.07252400	0.11030900	1.28539400
H	-5.08166800	0.08528900	-1.42777000
N	0.00000000	0.00000000	2.05518200
N	0.00000000	0.00000000	-2.14401600
N	2.02875600	-0.04153800	-0.07021400
N	-2.02875600	0.04153800	-0.07021400

Pd[Chl]

Pd	0.00000000	0.00000000	-0.05326200
C	0.68404300	0.00949900	-4.28743600
C	0.73966700	-0.19306100	4.25219700
C	1.10490100	0.01232100	-2.91463000
C	1.11359500	-0.09224900	2.79238600
C	2.41566900	-0.12038600	2.35903000

C	2.431523000	0.018089000	-2.491892000
C	2.847516000	-0.075247000	1.029531000
C	2.858222000	-0.004883000	-1.177804000
C	4.227230000	-0.070385000	0.613994000
C	4.232624000	-0.024206000	-0.751577000
C	-0.684043000	-0.009499000	-4.287436000
C	-0.739667000	0.193061000	4.252197000
C	-1.104901000	-0.012321000	-2.914630000
C	-1.113595000	0.092249000	2.792386000
C	-2.415669000	0.120386000	2.359030000
C	-2.431523000	-0.018089000	-2.491892000
C	-2.847516000	0.075247000	1.029531000
C	-2.858222000	0.004883000	-1.177804000
C	-4.227230000	0.070385000	0.613994000
C	-4.232624000	0.024206000	-0.751577000
H	0.883364000	-1.228250000	4.586616000
H	1.361422000	0.017960000	-5.132043000
H	1.364543000	0.450387000	4.875750000
H	3.187344000	-0.180877000	3.120485000
H	3.195714000	0.033742000	-3.263185000
H	5.069108000	-0.095859000	1.294176000
H	5.079530000	-0.005553000	-1.425849000
H	-0.883364000	1.228250000	4.586616000
H	-1.361422000	-0.017960000	-5.132043000
H	-1.364543000	-0.450387000	4.875750000
H	-3.187344000	0.180877000	3.120485000
H	-3.195714000	-0.033742000	-3.263185000
H	-5.069108000	0.095859000	1.294176000
H	-5.079530000	0.005553000	-1.425849000
N	0.000000000	0.000000000	2.004123000
N	0.000000000	0.000000000	-2.090254000
N	2.033609000	-0.033280000	-0.066292000
N	-2.033609000	0.033280000	-0.066292000

Pt[Chl]

Pt	0.000000000	0.000000000	-0.051553000
C	0.683050000	0.025505000	-4.277684000
C	0.732147000	-0.217099000	4.240045000
C	1.106145000	0.036607000	-2.907577000
C	1.112768000	-0.110062000	2.785078000
C	2.412550000	-0.148128000	2.356417000
C	2.429415000	0.058100000	-2.486688000
C	2.847363000	-0.088679000	1.031481000
C	2.857680000	0.019147000	-1.176183000
C	4.224189000	-0.080188000	0.614880000
C	4.229744000	-0.009617000	-0.748743000
C	-0.683050000	-0.025505000	-4.277684000
C	-0.732147000	0.217099000	4.240045000
C	-1.106145000	-0.036607000	-2.907577000

C	-1.112768000	0.110062000	2.785078000
C	-2.412550000	0.148128000	2.356417000
C	-2.429415000	-0.058100000	-2.486688000
C	-2.847363000	0.088679000	1.031481000
C	-2.857680000	-0.019147000	-1.176183000
C	-4.224189000	0.080188000	0.614880000
C	-4.229744000	0.009617000	-0.748743000
H	0.837963000	-1.261249000	4.561016000
H	1.360493000	0.048319000	-5.121411000
H	1.375470000	0.396495000	4.874373000
H	3.181388000	-0.222711000	3.119568000
H	3.192489000	0.087686000	-3.258496000
H	5.065493000	-0.120711000	1.294846000
H	5.076363000	0.017510000	-1.422733000
H	-0.837963000	1.261249000	4.561016000
H	-1.360493000	-0.048319000	-5.121411000
H	-1.375470000	-0.396495000	4.874373000
H	-3.181388000	0.222711000	3.119568000
H	-3.192489000	-0.087686000	-3.258496000
H	-5.065493000	0.120711000	1.294846000
H	-5.076363000	-0.017510000	-1.422733000
N	0.000000000	0.000000000	1.988724000
N	0.000000000	0.000000000	-2.077519000
N	2.028801000	-0.027868000	-0.064253000
N	-2.028801000	0.027868000	-0.064253000