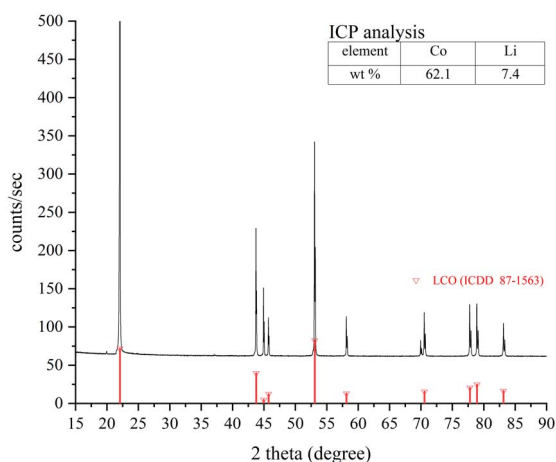
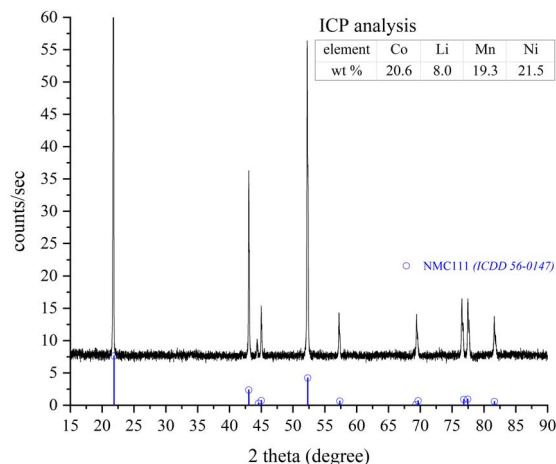
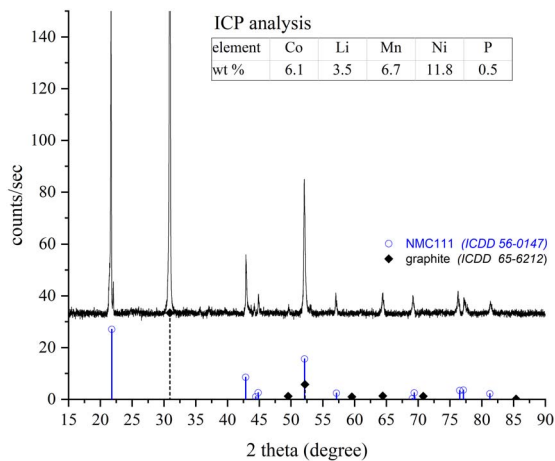


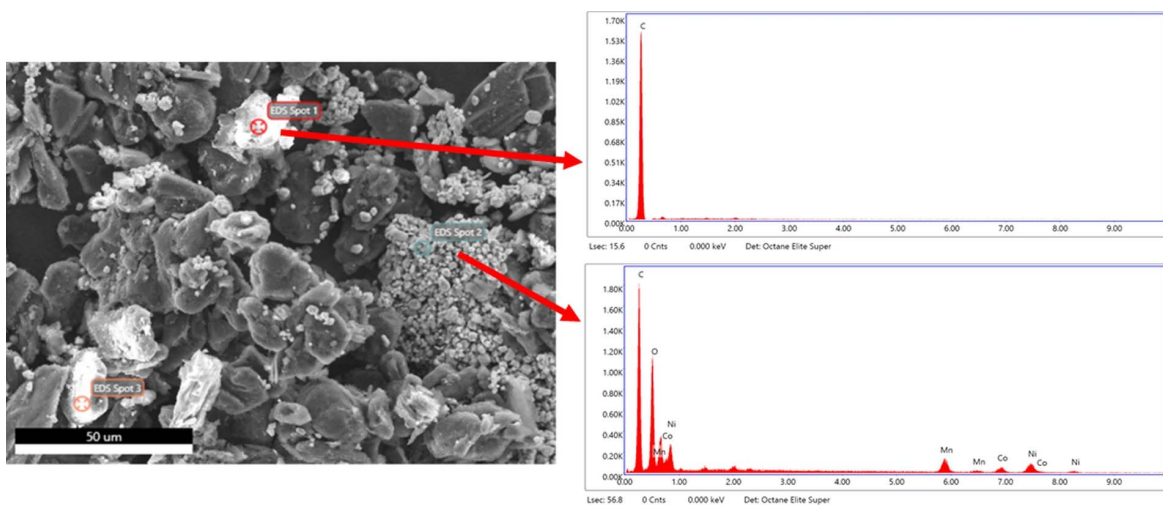
Research article

A sustainable solvothermal process extracting
critical elements from Li-ion batteriesVirginie Nachbaur^{ⓧ,*}, Firas Ayadi^a, Béatrice Foulon^a, Malick Jean^a, Valérie Pralong^{ⓧ,b}
and Samuel Jouen^{ⓧ,*}^a GPM, Normandie Univ, UNIROUEN, INSA Rouen, CNRS, 76000 Rouen, France^b CRISMAT, Univ. Caen, ENSICAEN, CNRS, 14050 Caen, FranceE-mails: virginie.nachbaur@univ-rouen.fr (V. Nachbaur),
samuel.jouen@univ-rouen.fr (S. Jouen)**Supplementary Figure S1.** XRD pattern and ICP analysis of pristine LCO.**Supplementary Figure S2.** XRD pattern and ICP analysis of pristine NMC 111.

* Corresponding authors.



Supplementary Figure S3. XRD patterns and ICP analysis of Black Mass extracted from a Xiaomi battery.



Supplementary Figure S4. SEM image and EDX analysis of Black Mass extracted from a Xiaomi battery.