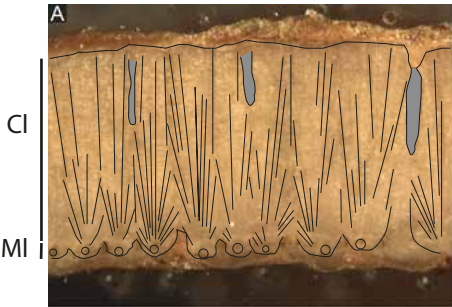
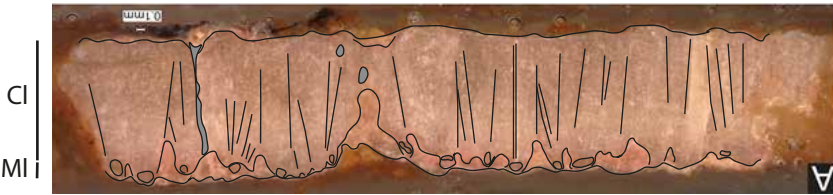


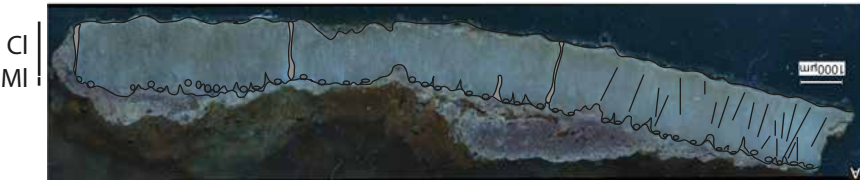
Megaloolithus petralta



BGC.1A.2017.51 - CD13.PV.2025.01.004



BGC.1A.2017.16 - CD13.PV.2025.01.001



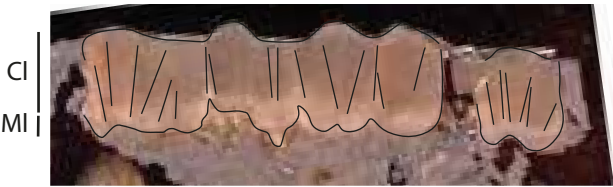
BGC.1A.2017.52CD13.PV.2025.01.005



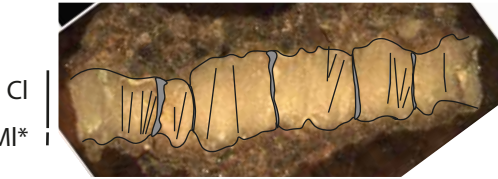
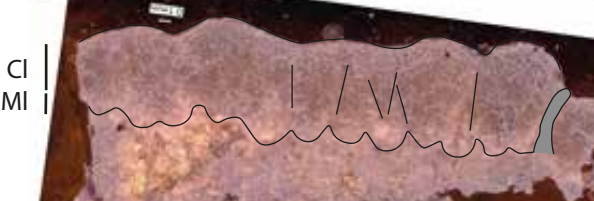
Vianey-Liaud et Garcia (2000)

Shell unit shape : Short fan-shape  
Fused unit shell : partially  
Growth lines : arched to undulating  
Pore canal system : simple

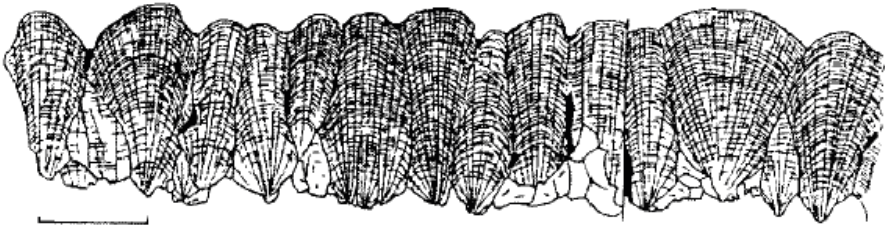
Megaloolithus mammilare



VLP - MHNAix-PV.1999.13



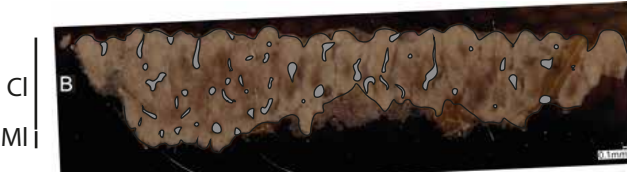
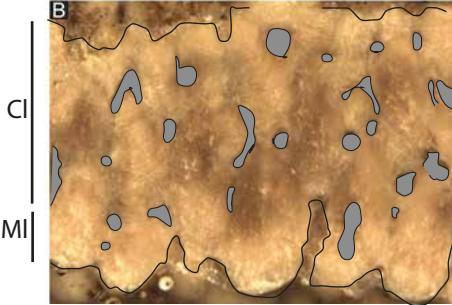
GAL- MHNAix.PV.2025.10.1



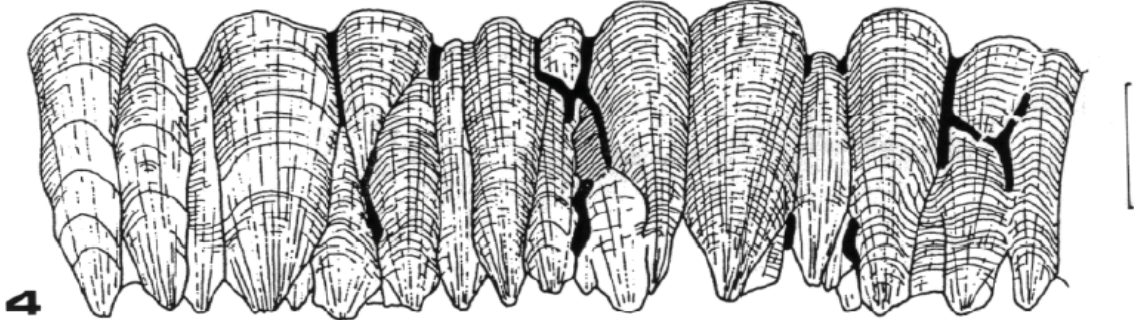
Vianey-Liaud et Garcia (2000)

Shell unit shape : wide and irregular fan-shape  
Fused unit shell : yes  
Growth lines : arched to undulating  
Pore canal system : simple  
MI\* : mammilla base missing due to dissolution

Megaloolithus siruguei



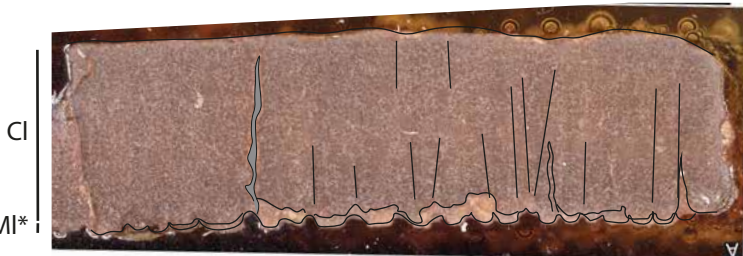
PSS - MHNAIX.PV.2025.9.1



Vianey-Liaud et Garcia (2000)

Shell unit shape : Short and irregular fan-shape  
Fused unit shell : yes  
Growth lines : arched to undulating  
Pore canal system : reticulate tubocanaliculate

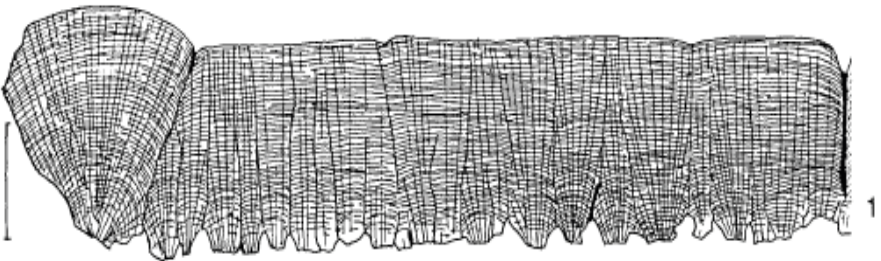
Cairanoolithus dughii



CRA - MHNAix.PV.2025.1.2



FAM - MHNA-PV.2005.24.18



Garcia (1998)

Shell unit shape : narrow fan-shape to sub-columnar  
Fused unit shell : yes  
Growth lines : undulating to horizontal  
Pore canal system : narrow tubocanaliculate  
MI\* : mammilla base missing due to dissolution