



INSTITUT DE FRANCE
Académie des sciences

Comptes Rendus

Géoscience

Sciences de la Planète

Luís Vítor Duarte, Ricardo Louro Silva, Ana Cristina Azerêdo, María José Comas-Rengifo and João Graciano Mendonça Filho

Shallow-water carbonates of the Coimbra Formation, Lusitanian Basin (Portugal): contributions to the integrated stratigraphic analysis of the Sinemurian sedimentary successions in the western Iberian Margin

Volume 354, Special Issue S3 (2022), p. 89-106


Published online: 13 October 2022

Issue date: 13 January 2023

<https://doi.org/10.5802/crgeos.144>

Part of Special Issue: Integrated stratigraphy of the Jurassic and the Cretaceous: a tribute to Jacques Rey

Guest editors: Carine Lézin (Laboratoire Géosciences Environnement, Université Paul Sabatier, 31000 Toulouse, France) and Thomas Saucède (Biogéosciences, UMR 6282 CNRS, Université Bourgogne Franche-Comté, 21000 Dijon, France)

 This article is licensed under the
CREATIVE COMMONS ATTRIBUTION 4.0 INTERNATIONAL LICENSE.
<http://creativecommons.org/licenses/by/4.0/>



*Les Comptes Rendus. Géoscience — Sciences de la Planète sont membres du
Centre Mersenne pour l'édition scientifique ouverte*

www.centre-mersenne.org

e-ISSN : 1778-7025



Integrated stratigraphy of the Jurassic and the Cretaceous: a tribute to Jacques Rey /
Stratigraphie intégrée du Jurassique et du Crétacé : un hommage à Jacques Rey

Shallow-water carbonates of the Coimbra Formation, Lusitanian Basin (Portugal): contributions to the integrated stratigraphic analysis of the Sinemurian sedimentary successions in the western Iberian Margin

Luís Vítor Duarte^{®*}, ^a, Ricardo Louro Silva[®] ^b, Ana Cristina Azerêdo[®] ^c,
María José Comas-Rengifo[®] ^d and João Graciano Mendonça Filho[®] ^e

^a Universidade de Coimbra, MARE and Departamento de Ciências da Terra, Rua Sílvio Lima, Polo II, 3030-325 Coimbra, Portugal

^b Department of Earth Sciences, University of Manitoba, 230 Wallace Building, 125 Dysart Road, Winnipeg, Manitoba, R3T 2N2, Canada

^c Universidade de Lisboa, Faculdade de Ciências, Departamento de Geologia and Instituto Dom Luiz (IDL), Campo Grande, Ed. C6, 4º piso, 1749-016 Lisboa, Portugal

^d Departamento de Geodinámica, Estratigrafía y Paleontología, Universidad Complutense de Madrid, José Antonio Novais, 12, 28040, Madrid, Spain

^e Geosciences Department and LAFO, Federal University of Rio de Janeiro, Rio de Janeiro, Brazil

E-mails: lduarte@dct.uc.pt (L. V. Duarte), ricardo.silva@umanitoba.ca (R. L. Silva), acazeredo@fc.ul.pt (A. C. Azerêdo), mjcomas@ucm.es (M. J. Comas-Rengifo), graciano@geologia.ufrj.br (J. G. Mendonça Filho)

Abstract. An integrated stratigraphic analysis of the Coimbra Formation was performed in the S. Pedro de Moel outcrops of the Lusitanian Basin (Portugal). This unit is dated from the lower-upper (Oxynotum Chronozone) Sinemurian and is subdivided into eight informal subunits. Except for its base, consisting of dolostones and microbialites, much of the succession consists of bioclastic and bioturbated micritic centimetric–decimetric limestones (sometimes rich in benthic macrofauna) alternating with millimetric–centimetric marly layers, all deposited in shallow-water carbonate ramp environments. Organic-rich sediments occur throughout, with total organic carbon reaching up to 12 wt%. At a broader scale, the Coimbra Formation is transgressive and part of a long-lasting 2nd-order transgressive–regressive facies cycle ending around the Sinemurian–Pliensbachian boundary. The vertical variation of $\delta^{13}\text{C}$ determined in bulk carbonate is characterized by relatively normal marine values (0–2.5‰); however, several negative shifts are associated with the organic-rich sediments,

* Corresponding author.

with a maximum amplitude of $\sim 8\%$ in the Obtusum Chronozone. These shifts in bulk carbonate $\delta^{13}\text{C}$ are interpreted to be of diagenetic origin and, therefore, of local significance. However, it cannot be discarded that a regional/global signal is imprinted on the observed trends.

Keywords. Sinemurian, Shallow-water carbonates, Organic-rich deposits, Stratigraphy, Stable carbon isotopes, Lusitanian Basin.

Published online: 13 October 2022, Issue date: 13 January 2023

1. Introduction

The Lower Jurassic of the Lusitanian Basin (Western Portugal) shows a distinctive succession of carbonate deposits that are a stratigraphic reference at a global scale [e.g. Duarte *et al.*, 2017, Hesselbo *et al.*, 2007, Rocha *et al.*, 2016]. Much of the research interest arises from the preferred palaeogeographic location of these deposits between the Tethyan and pre-Atlantic realms [Thierry and Barrier, 2000], thus relevant for regional and global biostratigraphic correlations and palaeogeographic and palaeobiogeographic reconstructions [e.g. Ferreira *et al.*, 2019, Rocha *et al.*, 2016, Silva *et al.*, 2021]. Except for its base, dated from the Sinemurian, the majority of the Lower Jurassic is composed of hemipelagic marly limestones with abundant benthic and nektonic macrofauna, formally organised in several lithostratigraphic units [e.g. Duarte and Soares, 2002, Duarte *et al.*, 2010, Silva *et al.*, 2015]. These formations are biostratigraphically well constrained (ammonites, calcareous nannofossils and dinoflagellates biostratigraphy) and dated from the uppermost Sinemurian to the upper Toarcian [e.g. Correia *et al.*, 2018, Dommergues, 1987, Ferreira *et al.*, 2019, Rocha *et al.*, 2016]. In addition, a set of reference stable carbon isotopic curves, covering the Upper Sinemurian to Middle Toarcian, reinforces detailed regional and global correlation [e.g. Duarte *et al.*, 2014a, Hesselbo *et al.*, 2007, Oliveira *et al.*, 2006, Silva *et al.*, 2011, 2021, Suan *et al.*, 2010].

A significant part of the Sinemurian is represented by the Coimbra Formation (Fm), a unit that integrates the lexicon of Portuguese stratigraphy since the late 19th century; the so-called “Couches de Coimbra” [Choffat, 1880]. The Coimbra Fm is individualised on its dominant dolostone component, particularly evident towards the east, and represents the first evidence of sustained marine influence in the Lusitanian Basin. However, and despite its widespread cartographic distribution, a detailed stratigraphic analysis of this lithostratigraphic unit

is lacking [e.g. Azerêdo *et al.*, 2010, Dimuccio *et al.*, 2016].

The most complete section of the Coimbra Fm crops out in the S. Pedro de Moel region (Figure 1A,B). It is dominantly calcareous [Figure 1C,D; Azerêdo *et al.*, 2010, Duarte *et al.*, 2014b] and contains organic-rich facies [Duarte *et al.*, 2013, Poças Ribeiro *et al.*, 2013] and few levels with ammonites [e.g. Dommergues *et al.*, 2004, 2010]; therefore, this section holds great potential to perform an integrated stratigraphic analysis of the lowermost Sinemurian in the Lusitanian Basin.

This paper, based on the analysis of the Lower Jurassic outcrops at S. Pedro de Moel, has three main goals: (i) to improve the lithostratigraphy and biostratigraphy of the Coimbra Fm, (ii) to perform a chemostratigraphic analysis of the studied sections based on stable carbon isotopes from bulk carbonates and total organic carbon (TOC), and (iii) to contribute to a better understanding of the Portuguese sedimentary record potentially associated with the hyperthermal Liasidium Event, such as recently recognised by Hesselbo *et al.* [2020], Munier *et al.* [2021] and Riding *et al.* [2013]. According to these authors, this hyperthermal event is characterised by an abundant record of the marine dinoflagellate cyst *Liasidium variable* and the pollen grain *Classopollis classoides*, associated with a negative carbon isotope event.

2. Geological setting

The Lusitanian Basin, located in the western Iberian Margin, hosts a thick sedimentary succession dated from the Middle (?) Triassic to the Upper Cretaceous [e.g. Hiscott *et al.*, 1990, Kullberg *et al.*, 2013]. Except for the Hettangian lutitic and evaporitic deposits of the Dagorda Fm, the Lower Jurassic is represented by a thick succession of dolostones, limestones, and calcareous mudstones (up to 500 m thick), where several lithostratigraphic units are formalised [e.g. Dimuccio *et al.*, 2016, Duarte and Soares, 2002]. Framed

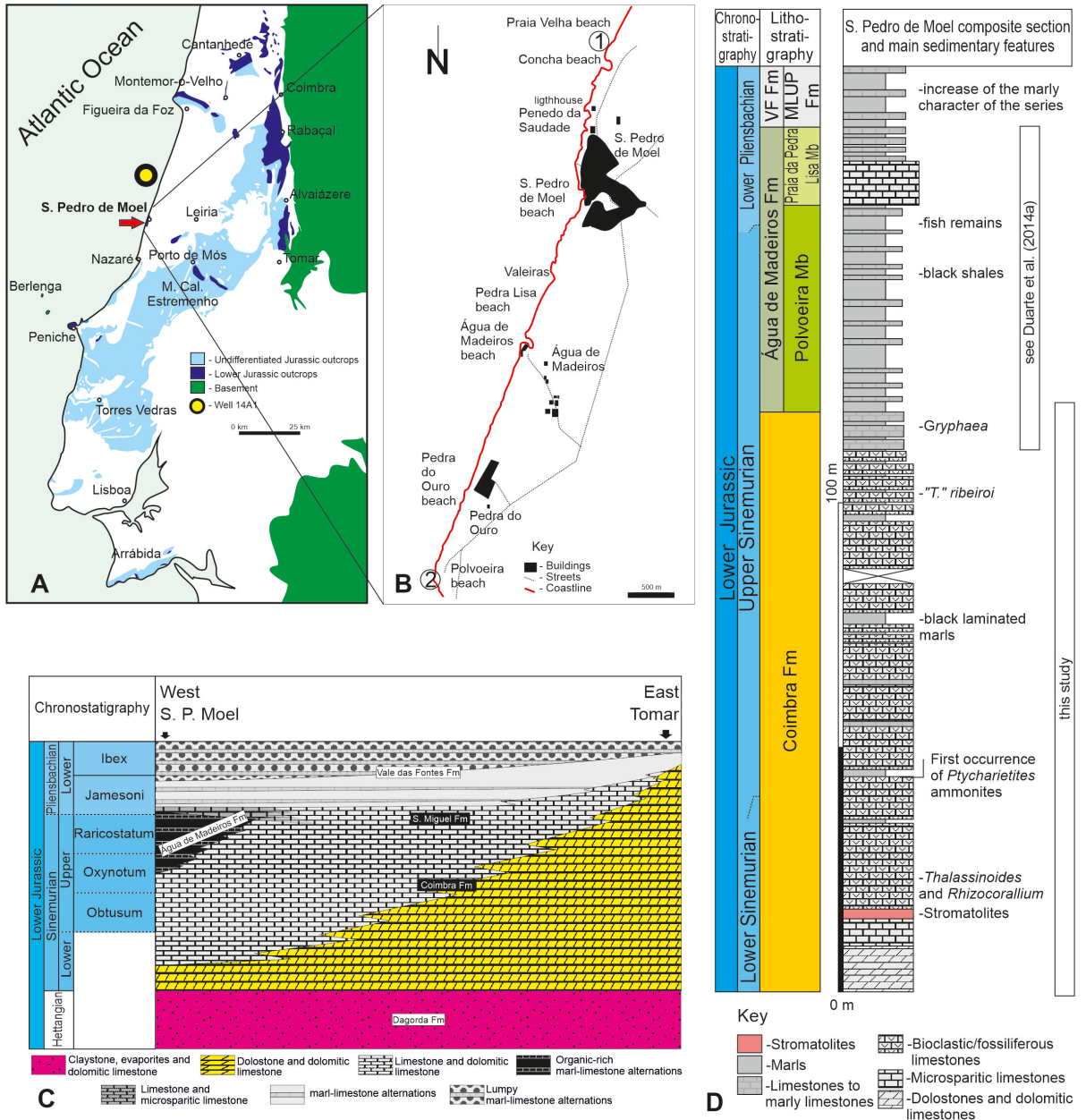


Figure 1. (A) Location of the S. Pedro de Moel region in the Lusitanian Basin (central Portugal), showing the main Lower Jurassic outcrops. (B) Studied area and location of the two sections: 1. Praia Velha-Lighthouse; 2. Polvoeira. (C) Lithostratigraphic chart of the Sinemurian for the Lusitanian Basin [modified from Duarte et al., 2010, 2012]. (D) Synthetic stratigraphic log of the Sinemurian–lower Pliensbachian succession in S. Pedro de Moel [modified from Azerêdo et al., 2010, Duarte et al., 2012, 2014a]. VF—Vale das Fontes Fm; MLUP—Marls and limestones with *Uptonia* and *Pentacrinus* member [see Duarte et al., 2010].

between the Hettangian Dagorda Fm and Pliensbachian hemipelagic marls and marly limestones, the base of the Sinemurian marks the beginning of carbonate deposition in the Lusitanian Basin in a shallow-water carbonate ramp [Azerêdo *et al.*, 2010, Dimuccio *et al.*, 2016, Duarte *et al.*, 2014b, Sêco *et al.*, 2018, Soares *et al.*, 1993]. These carbonates belong to the Coimbra Fm, consisting mainly of dolostones and dolomitic limestones to the east and is dominated by limestone in the westernmost sectors of the basin [Dimuccio *et al.*, 2016, Duarte *et al.*, 2010; Figure 1C,D], including some thick marly intervals. Here, the Coimbra Fm is overlain by an upper Sinemurian–lowermost Pliensbachian marl–limestone unit rich in organic matter, the Água de Madeiros Fm [Duarte *et al.*, 2010]. The Água de Madeiros Fm is particularly well exposed in the S. Pedro de Moel region and is the most representative of the latest Sinemurian age in Portugal [Duarte *et al.*, 2014a,b; Figure 1C,D].

The most complete Sinemurian succession of the Lusitanian Basin crops out at S. Pedro de Moel. In this region, the Coimbra Fm is visible on both flanks of a fractured km-scale syncline exposed along the coastline (Figure 1B). At the Praia Velha Beach, located to the north of the S. Pedro de Moel Village and at the northern cropping out edge of the syncline, the base of the Coimbra Fm is highly fractured and folded, in a succession dipping towards the west [see Azerêdo *et al.*, 2010, Cabral *et al.*, 2015, Dommergues *et al.*, 2004, 2010, Duarte *et al.*, 2014b]. In the southern part of the syncline, at the Polvoeira Beach, the uppermost part of the Coimbra Fm is continuous [Figures 1B and 2; see also Duarte *et al.*, 2012, 2014b, Paredes *et al.*, 2013, 2016] and includes the transition to the overlying Água de Madeiros Fm [Duarte *et al.*, 2010, 2012, 2014a].

The base of the Coimbra Fm was previously described by Azerêdo *et al.* [2010], who identified four subunits (UA to UD). Later, in a preliminary work, Duarte *et al.* [2014b] described the upper part of the formation and identified four other units (UE to UH). Units UA to UG are observed from the Concha Beach to the S. Pedro de Moel Lighthouse (the latter also known as Penedo da Saudade) section (coordinates: 39° 46' 11.12" N; 9° 1' 38.70" W), whereas UH occurs only at Polvoeira Beach (coordinates: 39° 43' 8.74" N; 9° 3' 0.10" W) (Figures 1B and 2). According to the ammonite record [see Dommergues *et al.*, 2004, 2010, Duarte *et al.*, 2014b], the Coimbra

Fm in this region is dated from the lower to upper Sinemurian. Previous studies in this region have also focused on ostracod assemblages [Cabral *et al.*, 2013, 2015], organic and petrographic geochemistry [Brito *et al.*, 2017, Duarte *et al.*, 2013, Poças Ribeiro *et al.*, 2013] and gamma-ray analysis [Sêco *et al.*, 2018].

3. Material and methods

This study focuses on the stratigraphic, sedimentologic and geochemical analysis of the Coimbra Fm at S. Pedro de Moel, through the examination of the Praia Velha and Polvoeira sections [Figures 1B and 2; see Azerêdo *et al.*, 2010, Duarte *et al.*, 2014b].

3.1. Stratigraphy and sedimentology

This study expands the sedimentological and lithostratigraphic description of the Coimbra Fm previously addressed in Azerêdo *et al.* [2010] and Duarte *et al.* [2014b]. This was achieved through new stratigraphic and sedimentological observations from the middle–upper part of the Coimbra Fm in the upper part of the Praia Velha–Lighthouse and Polvoeira sections. Field observation and sedimentological descriptions were complemented by microfacies synthetic characterization of 77 thin sections using a Nikon Eclipse polarised light microscope coupled with a Nikon digital microscope camera at the Department of Earth Sciences of the University of Coimbra. In addition, new ammonites were collected and identified.

3.2. Total organic carbon (TOC) and total sulphur (ST)

Insoluble residue (IR), total organic carbon (TOC) and total sulphur (TS) content were measured in 67 samples of grey to dark grey to black mudstone/marlstone (black shales) using a Leco-SC144 analyser and following the standard laboratory protocols of the Palynofacies and Organic Facies Laboratory of the Federal University of Rio de Janeiro [e.g. Mendonça Filho *et al.*, 2012]. A higher resolution sampling scheme was used where the black shale lithology was more evident.

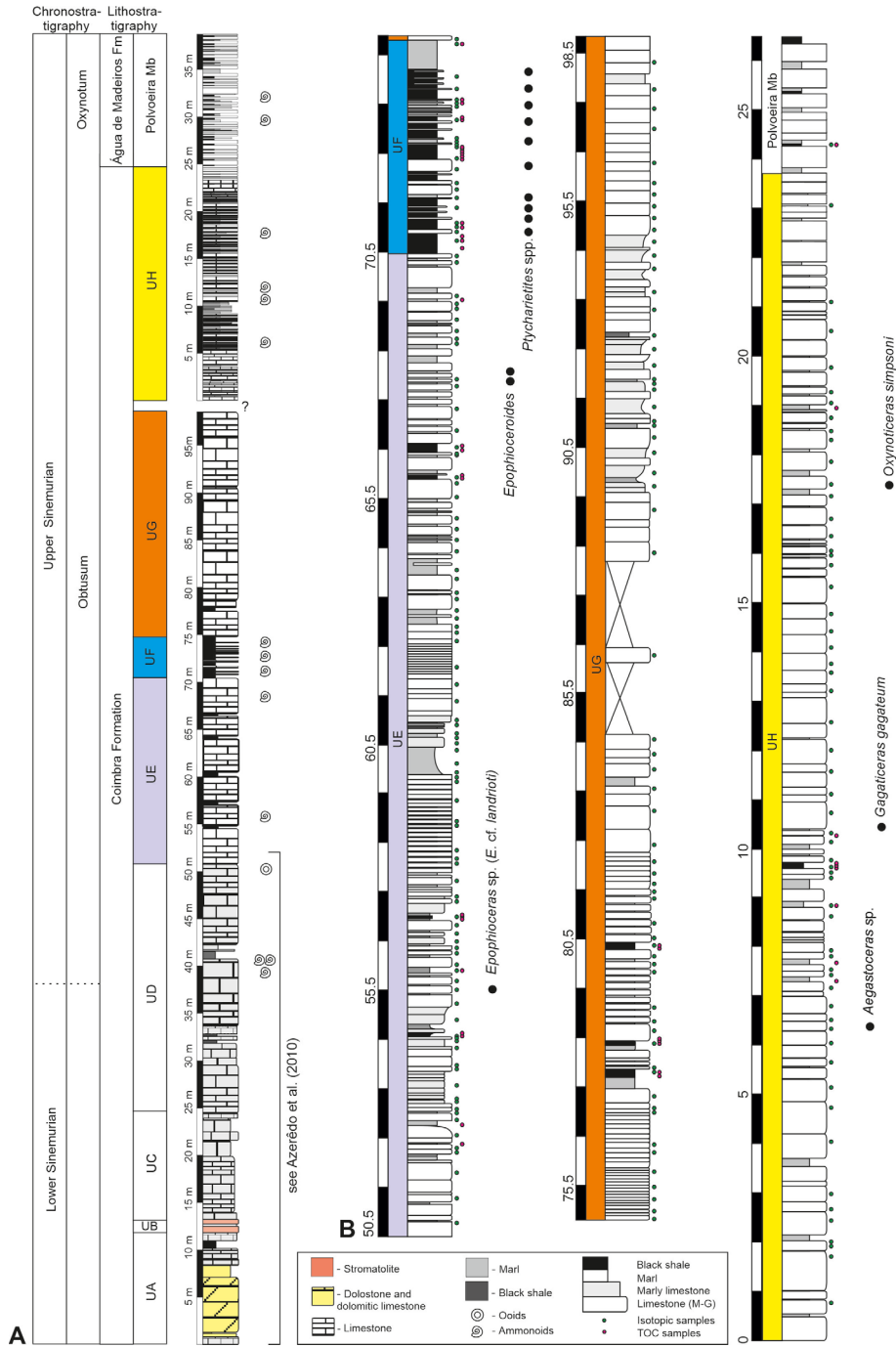


Figure 2. (A) General composite section of the Coimbra Fm (lower to upper Sinemurian) in the S. Pedro de Moel region. (B) Detailed stratigraphic columns of UE to UG (Lighthouse section) and UH (Polvoeira section). For more information about UA–UD, see Azerêdo et al. [2010]. *Epophioceroides* occurrences from Dommergues et al. [2010].

3.3. Carbon and oxygen stable isotopes

Carbon ($\delta^{13}\text{C}_{\text{carb}}$) and oxygen ($\delta^{18}\text{O}_{\text{carb}}$) stable isotopes ratios were analysed on 292 bulk carbonate samples. Due to the thickness of the studied succession and facies heterogeneity, samples were collected from micritic sediments and with an average sampling resolution of about one (1) meter, reduced to about 0.3 to 0.5 m in the middle to upper part of the series. Sample aquilots were selected to avoid shell fragments and hand-drilled in the laboratory to avoid sparitic cement. Stable oxygen and carbon isotopes were analysed at Iso-Analytical (UK). Isotopic results are presented in per mil (‰) standard notation (δ) relative to the Vienna PeeDee Belemnite (V-PDB). Reproducibility based on standards is better than 0.2‰ for both $\delta^{18}\text{O}_{\text{carb}}$ and $\delta^{13}\text{C}_{\text{carb}}$. The reference materials used during analysis were IAR022 (Iso-Analytical working standard calcium carbonate, $\delta^{13}\text{C} = -28.63\text{‰}$ and $\delta^{18}\text{O} = -22.69\text{‰}$), NBS-18 (carbonate, $\delta^{13}\text{C} = -5.01\text{‰}$ and $\delta^{18}\text{O} = -23.2\text{‰}$) and IA-R066 (chalk, $\delta^{13}\text{C} = +2.33\text{‰}$ and $\delta^{18}\text{O} = -1.52\text{‰}$). IA-R022 was calibrated against and is traceable to NBS-18 and NBS-19 (limestone, $\delta^{13}\text{C} = +1.95\text{‰}$). IA-R066 was calibrated against and is traceable to NBS-18 and IAEA-CO-1 (Carrara marble, $\delta^{13}\text{C} = +2.5\text{‰}$). NBS-18, NBS-19 and IAEA-CO-1 are inter-laboratory comparison standard materials distributed by the International Atomic Energy Agency (IAEA).

4. Results

4.1. Stratigraphy and sedimentary characterisation

Integration of the two studied sections from S. Pedro de Moel allows inferring a minimum thickness of about 125 m (~100 m thick in the Praia Velha - Lighthouse section and ~25 m in the Polvoeira section) for the Coimbra Fm in this area of the Lusitanian Basin. The limitations to this observation refer to the fact that the boundary with the underlying Dagorda Fm is not visible here and there is a gap of observation between the two sections (Figure 2). In this region, the Coimbra Fm is subdivided into eight units (UA to UH; Figure 2). The main stratigraphic and sedimentological characteristics are described below. For more detail about units UA to UD see Azerêdo *et al.* [2010] (Figure 3A,B).

UA (~12 m)

Comprises a large diversity of dolomitic and limestone facies and textures (mudstone to grainstone), locally fossiliferous, including mainly bivalves and gastropods. Organic-rich marly intervals occur at the top of UA, alternating with laminated calcareous-dolomitic centimetric beds (Figure 3A).

UB (1.5 m)

Mainly composed of decimetric- to metric-scale domiform stromatolites, including centimetre micritic limestones and marly limestones (mudstones and wackestones) and a few centimetre-thick intervals of wacke-packstones (Figure 3A).

UC (11.3 m)

Alternation of marly, micritic, and bioclastic limestones, with rare levels of ostracod-rich marls, sometimes intensely bioturbated by *Rhizocorallium* and *Thalassinoides*. Some grainstone levels, generally thin (centimetric-scale), are enriched in *Unicardium* sp. and ostreids (Figure 3A,B).

UD (25.7 m)

With a facies arrangement similar to UC, UD includes rare marly levels (with ostracods) and fossiliferous limestones and coquinas of *Unicardium costae* and gastropods (Figure 3B). Some levels are intensely bioturbated with *Thalassinoides* and *Rhizocorallium* (*Rhizocorallium commune* var. *irregulare* [Knaust, 2013]; Figure 4A). The first ammonoids occur at around 40 m [*Asteroceras* sp. and some species of the *Ptycharietites* genus, see Dommergues *et al.*, 2004, 2010] (Figures 3B and 4B), associated with an organic-rich marly interval. This unit ends with decimetric limestone beds of oosparites/grainstone.

UE (~20 m)

This unit mainly comprises limestone, generally composed of centimetric and irregular beds, locally intensely bioturbated and bioclastic, sporadically alternating with marly interbeds that can reach few decimeters in thickness, some corresponding to black shales (Figure 3C,D). Limestone lithotypes range from fossiliferous micrites to biopelsparites/grainstone. Despite occurrences of gastropods and echinoids, fossil macrofauna is dominated by bivalves (*Unicardium costae*, ostreids)



Figure 3. (A) Base of the Coimbra Fm at Praia Velha with stromatolites (UB), see also Azerêdo *et al.* [2010]. (B) Panoramic view of UC and UD at Concha Beach (white arrow: first level with *Ptycharietites*). (C) Base of UE showing a discrete level of black shale (white arrow). (D) Panoramic view of the thick black shale interval of UE, framed by UE and UG (just north of Lighthouse). (E) Uppermost part of UG around the Lighthouse, and location of Polvoeira Beach (red arrow). (F) Limestones enriched in brachiopods and bivalves of the base of UH at Polvoeira Beach.

forming several levels of coquinas. Bioturbation is a constant feature of this unit with *Rhizocorallium* and *Thalassinoides*. Two horizons with rare ammonoids [including *Epophioceroides apertus* in Dommergues *et al.*, 2010] were identified in this unit.

UF (4.4 m)

Corresponds to the marliest part of the Coimbra Fm and includes well defined laminated organic-rich facies (black shales) alternating with centimetric



Figure 4. Relevant sedimentary and stratigraphic aspects of the Coimbra Fm at S. Pedro de Moel: (A) Intense bioturbated level of UD with *Rhizocorallium commune* var. *irregulare* [Knaust, 2013]. (B) Surface with a high concentration of *Unicardium* sp. and *Ptycharietites* sp. (see text). (C) Sharp transition between UE and UF (white arrow). Noteworthy are the decimetric levels of organic-rich marls of the base of UF. (D) The most organic-rich horizons observed in UH.

bioclastic limestone beds (biomicrites to pelsparites, packstone–grainstone) (Figures 3D and 4C). Similarly to the previous units, benthic macrofauna is dominated by bivalves (*Unicardium costae*, ostreids), although restricted to some of the limestone beds. This interval of the Coimbra Fm is particularly rich in ammonoids, including several species of the genus *Ptycharietites* [Dommergues *et al.*, 2010].

UG (>24 m)

Composed of metric sets of centimeter layers of micritic and bioclastic limestones interbedded at the base with centimetric dark grey, organic-rich, marly limestones. The microfacies vary from grainstones, fossiliferous and intraoosparite micrites with different textures to mudstones. Fossiliferous and bioclastic facies (essentially bivalves) and bioturbated levels (mainly *Rhizocorallium*) are of less importance when

comparing with the previous units. The intermediate portion of this unit is of difficult access (Figure 3D,E).

UH (>25 m)

This unit is restricted to the Polvoeira Beach (Figure 3E,F) and is composed of decimetric micritic limestone (fossiliferous micrites/mudstone to biomicrites/packstones)/millimetric-centimetric marl (sometimes organic-rich; Figure 4D) alternations. This succession contrasts with previous units of the Coimbra Fm because of its greater diversity of benthic macrofauna and the first record of brachiopods. Faunal assemblages include bivalves (some species of *Pholadomya*, *Mactromya*, *Unicardium*), brachiopods (specimens of “*Terebratula*” *ribeiroi* and the genus *Zeilleria* and *Cincta*), gastropods, crinoids, and rare ahermatypic corals [see also Paredes *et al.*, 2013, 2016, Vitón *et al.*, 2020].

Although less frequent than in other units (e.g. Units C to E), bioturbation is sometimes intense, consisting mainly of *Thalassinoides*, *Rhizocorallium* and *Diplocraterium*. Although extremely rare, ammonites occur according to the sequence of the following genus *Aegasteroceras*, *Gagaticeras* and *Oxynoticeras* (Figure 2).

4.2. Total organic carbon and ST

Total organic carbon contents determined in 67 marly horizons show that several levels of the Coimbra Fm are rich in organic matter. Except for UC, all units have TOC contents above 1 wt% (Figure 5 and Supplementary Table 1). In UA and UF (Figures 3A,C,D and 4C), TOC contents reach up to 6 wt% (~10.6 m) and 9 wt% (~72.9 m), respectively. The highest TOC contents were determined in discrete levels of the thicker UG and UE, reaching up to ~12 wt% (~77.7 m) and ~10 wt% (~65.87 m), respectively. The highest TS contents were determined in UF (3.0 wt%) and at the base of UG (2.8 wt%). Total sulfur contents of the remaining units are generally below 1 wt%. The carbonate content of the marly intervals is variable across the succession (Table 1 in Supplementary Material). The marly intervals of UA are those with lower carbonate content, where the siliciclastic contribution reaches up to 70% (insoluble residue). Insoluble residue contents decrease upwards, with the marly intervals of UH presenting contents generally below 20%.

4.3. C and O stable isotopes in bulk carbonate

$\delta^{13}\text{C}_{\text{carb}}$ from the Coimbra Fm ranges from -5.8‰ (73.21 m) to 2.8‰ (60.46 m) (Table 1 in Supplementary Material). The carbon-isotope curve shows little variation (around 2‰) except for a high amplitude negative excursion in UF (Figure 5). The lower (UA to middle part of UE) and upper (UG and UH) parts of the isotope curve are largely characterised by positive $\delta^{13}\text{C}_{\text{carb}}$ values, around 2‰ . The most pronounced negative excursion, with an amplitude of $\sim 8\text{‰}$ (Figure 5), is observed in the organic-rich marly interval of UE. Less expressive is the negative excursion of $\sim 6\text{‰}$ at the top of unit G (~92.65 m) (IP1; Figure 5). Another very singular small negative peak in $\delta^{13}\text{C}_{\text{carb}}$ is associated to the enriched organic horizons observed in UH (IP2; Figures 4D and 5).

$\delta^{18}\text{O}_{\text{carb}}$ values are quite negative, ranging from -7.5‰ to -2.6‰ , but with less significant fluctuations than those of carbon isotopes. The most negative values of $\delta^{18}\text{O}_{\text{carb}}$ are mainly within the microbialites of UB and in some parts of the UD units. On the other hand, at the top of the Coimbra Fm (UH) $\delta^{18}\text{O}_{\text{carb}}$ values are more homogeneous and considerably higher than in the rest of the stratigraphic succession (Table 1 in Supplementary Material). Despite the low values of $\delta^{18}\text{O}_{\text{carb}}$, quite negative, there is no correlation with the $\delta^{13}\text{C}_{\text{carb}}$ data, as confirmed by the Pearson $R^2 = -0.094$ (Figure 1 in Supplementary data).

5. Discussion

5.1. Biostratigraphic additions and thickness of the Coimbra Fm

The lithological and facies succession of the Coimbra Fm in the S. Pedro de Moel area is unique within the Lusitanian Basin [e.g. Azerêdo *et al.*, 2010, Duarte, 2004, Duarte *et al.*, 2014b]. The vertical facies variation allows for a detailed palaeoenvironmental assessment and sequence stratigraphic interpretation. In addition, and despite the rarity of age-diagnostic ammonites, this is the only basin area where the biostratigraphic record allows dating the Coimbra Fm, although a large part of the ammonite record is endemic [Dommergues *et al.*, 2004, 2010, Mouterde and Ruget-Perrot, 1975]. This work is the first to present a detailed stratigraphic analysis of the entire succession, allowing us to add new ammonite data and improve the upper Sinemurian biostratigraphic scheme for the western Iberian margin.

This work confirms the previous studies of Dommergues *et al.* [2004, 2010], indicating that a large part of the Coimbra Fm in the study area is dated from the Obtusum Chronozone. Ammonites, also the oldest occurrence in the Lusitanian Basin, are mainly restricted to the top of UD [*Asteroceras* sp. and *Ptycharietites* species; see Dommergues *et al.*, 2010] and the UF (*Ptycharietites* species). Except for one horizon of UE (with *Epophioceras* sp. (*E. cf. landrioti*)), all taxa are endemic, making it difficult to draw correlations with the northwestern European basins [e.g. Corna *et al.*, 1997, Page, 2003]. However, according to the standard zonation, the new found specimen of *Epophioceras* sp. (*E. cf. landrioti*) in the lower part of

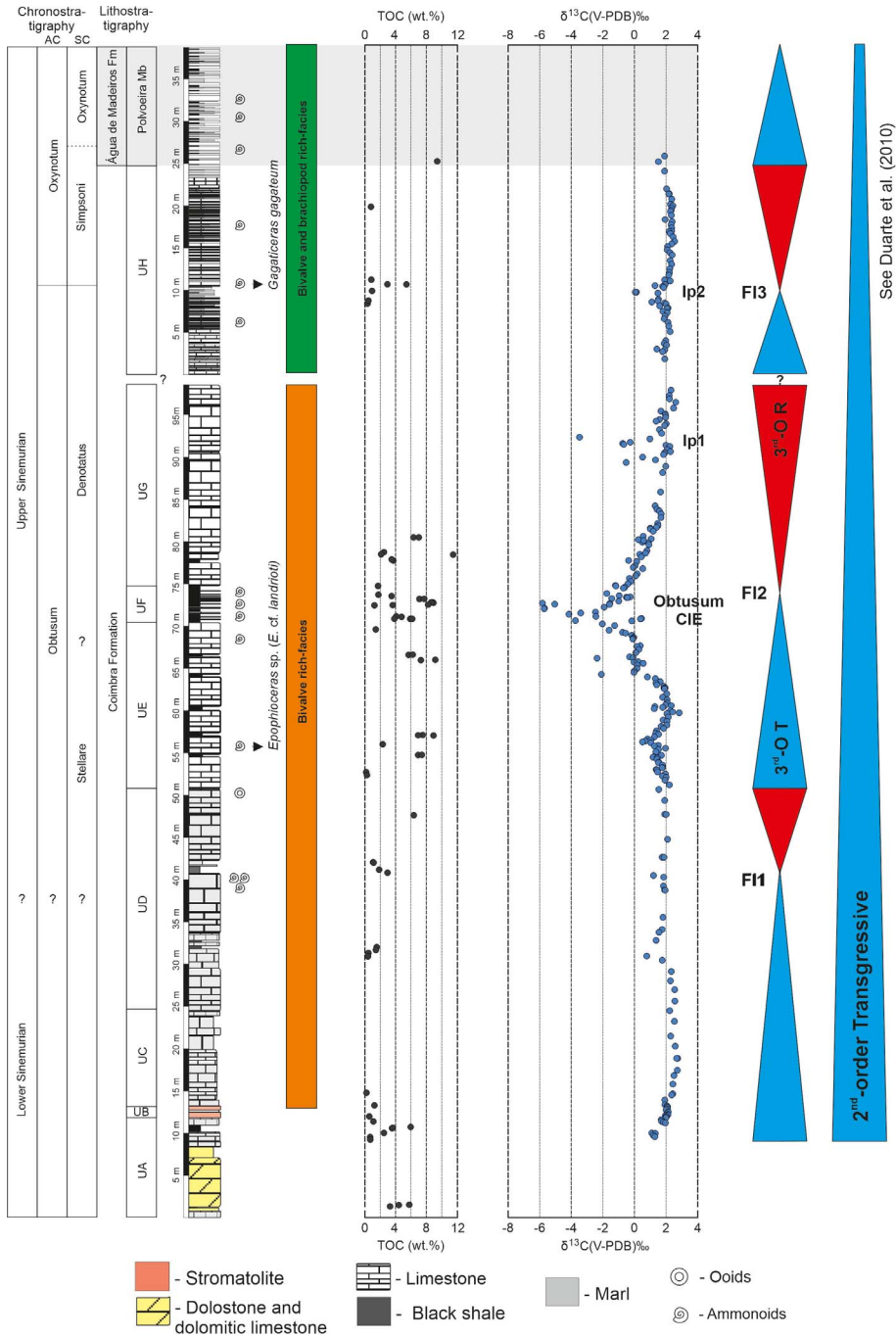


Figure 5. TOC variation, bulk carbonate carbon isotopic curve, and sequential interpretation [2nd and 3rd-order transgressive (3rd O T) and regressive (3rd O R) cycles] across the Coimbra Fm cropping out at S. Pedro the Moel. AC—Ammonite Chronozone; AS—Ammonite Subchronozone.

UE (at 56 m in Figures 2 and 5) indicates the middle part of *Stellare* Subchronozone.

Occurrence of *Aegasteroceras*, *Gagaticeras*, and *Oxynotoceras* [Figure 3; genus characteristic of the northwestern European basins, Comas-Rengifo *et al.*, 2021, Hesselbo *et al.*, 2020, Howarth, 2002] in UH allows assigning the top of the Coimbra Fm to the transition between the *Obtusum* and *Oxynotum* (*Simpsoni* Subchronozone) chronozones, as also recently noted by Comas-Rengifo *et al.* [2021] for the Asturias Basin, northern Spain. The presence of *Oxynotoceras simpsoni* undoubtedly marks the *Simpsoni* Subchronozone of the *Oxynotum* Chronozone. Comas-Rengifo *et al.* [2013] and Duarte *et al.* [2014a] noted that this ammonite Subchronozone extends to the basal part of the overlying *Água de Madeiros* Fm. In fact, the *Oxynotum* Chronozone shows *Oxynoceratidae* (*O. gr. oxynotum*, *C. cf. accipitris*), *Eoderoceratidae* (*B. bifer*) and *Echioceratidae*, an association that is recognised in the *Oxynotum* Subchronozone of Asturias [Comas-Rengifo *et al.*, 2013, 2021, Duarte *et al.*, 2014a].

Despite the overall uncertainty, the available biostratigraphic data show some important issues: firstly, the unusual thickness of the *Obtusum* Chronozone in S. Pedro de Moel. Considering the biostratigraphic uncertainty associated with the basal part of the succession and the lack of observation between UG and UH, the *Obtusum* Chronozone would be estimated to be about 90 m thick, much thicker when comparing with all other Lower Jurassic ammonite zones defined for the Lusitanian Basin [e.g. Duarte and Soares, 2002] and the thickness of the same zone in other European basins [e.g. Comas-Rengifo *et al.*, 2021, and references therein]; secondly, and according to the two main intervals with ammonites, and following Dommergues *et al.* [2010], the middle–upper part of the UD may be limited to the *Stellare* Subchronozone; this Subchronozone extends to the base of the UE (with the occurrence of *Epophioceras* sp. (*E. cf. landrioti*)).

The age of the lower part of Coimbra Fm, i.e., from UA to UC and base of UD (~40 m), is unknown and is here informally assigned to the lower–initial upper Sinemurian. However, according to the recent stratigraphic reinterpretation based in gamma-ray spectrometry of the offshore well 14A1, located close to the studied outcrop (Figure 1A), the base of the succession at the Praia Velha Beach may correspond to

the base of the Coimbra Fm [see Sêco *et al.*, 2018]. In well 14A1, the Coimbra Fm is 150 m thick [Sêco *et al.*, 2018]. This value contrasts with the approximately 125 m measured at S. Pedro de Moel, predicting that the gap observed between the top of the Praia Velha–Lighthouse succession and the base of the Polvoeira section may be important. However, and as indicated by the low gamma-ray values observed across UG and UH [see Sêco *et al.*, 2018], carbonate sedimentation should characterise this interval, and lithologies should be very similar to the two units (UG and UH) mentioned above. Another unanswered issue is the location and nature of the boundary with the Dagorda Fm, which is not visible in the area.

5.2. Organic matter deposition

The new geochemical data presented here substantiate the high TOC contents previously determined in some parts of the Coimbra Fm at S. Pedro de Moel [e.g. Brito *et al.*, 2017, Duarte *et al.*, 2013, Poças Ribeiro *et al.*, 2013]. It is important to point out that both the Sinemurian and Pliensbachian of the Lusitanian Basin are known for the occurrence of organic-rich deposits, i.e. the *Água de Madeiros* and *Vale das Fontes* formations (Figure 1C), both potential hydrocarbon source rocks [e.g. Brito *et al.*, 2017, Duarte *et al.*, 2010, 2012, 2013, Oliveira *et al.*, 2006, Poças Ribeiro *et al.*, 2013, Silva and Duarte, 2015, Silva *et al.*, 2011, 2015, 2021, Sêco *et al.*, 2018]. With the high TOC values (maximum of 12 wt%) determined in the present study, especially in the UA and UF (Figure 5), the importance of Coimbra Fm in this sector of the LB as a potential source rock, is also confirmed.

It is demonstrable that the characteristic Sinemurian shallow-water and relatively high-energy carbonate deposition in the area [see also Azerêdo *et al.*, 2010, Cabral *et al.*, 2015] was interrupted by brief episodes of deposition under lower energy conditions, favouring the accumulation of argillaceous sediments and preservation of organic matter, sometimes with high concentrations of S and pyrite. Organic matter accumulation probably resulted from increased productivity and poorly oxygenated bottom water conditions that had their climax in UA and UF; the latter is the thickest black shale interval in the studied succession, with organic rich facies devoid of benthic macrofauna and ichnofossils (Figures 3A,

3C,D, 4C and 5). These two intervals were also identified in well 14A1 [see Sêco *et al.*, 2018]. The organic-rich intervals, combined with other sedimentological attributes, are essential criteria in the sequence stratigraphic interpretation of the succession (see below).

Regarding the organic matter content and its characterization, Poças Ribeiro *et al.* [2013] presented an analysis of palynofacies and biomarkers that, despite being based on a small number of samples (nine from UE, UF and UH), allows a better understanding of the depositional environment. First, the kerogen assemblages of the samples rich in organic matter (with TOC values between 3 and 9 wt%) are dominantly composed of amorphous organic matter (generally above 80%) and only with a residual contribution of particles belonging to the Phytoclast Group (<3 wt%). According to Poças Ribeiro *et al.* [2013], deposition of the organic-rich facies occurred in a relatively restricted and low-energy shallow-water carbonate ramp. By opposition, samples with the lowest TOC contents (<0.5 wt%) are associated with a higher content of phytoclasts (>56%), indicating relatively more proximal deposition under oxidising conditions and with strong continental influence [see Poças Ribeiro *et al.*, 2013]. These facies are an essential argument in the sequential interpretation of the entire Sinemurian succession (see below). The occurrence of marine palynomorphs (acritarchs, prasinophytes, etc.), despite a slight increase in the upper part of the Coimbra Fm, is of little relevance when looking at the overall sequential organisation. In the limited number of samples analyzed in terms of palynofacies in Poças Ribeiro *et al.* [2013] no reference is made to the occurrence of dinoflagellate cyst *Liasidium variable*.

5.3. Palaeoenvironment and sequence stratigraphy

In the Mesozoic evolution of the Lusitanian Basin, the Coimbra Fm is the first unequivocal evidence of marine flooding at a basinal scale, related to the beginning of a carbonate ramp that will be maintained and developed until the end of the Middle Jurassic [see Azerêdo *et al.*, 2014, Soares *et al.*, 1993]. This unit is known for the dolomitic and calcareous-dolomitic facies that dominate a large part of the Sinemurian record in the eastern and proximal areas of the

basin. These facies are associated with very restricted marine conditions [see Azerêdo *et al.*, 2010, Dimucio *et al.*, 2016, Duarte *et al.*, 2010]. On the other hand, in the more distal areas, as is the case of the study area, these facies are limited to the basal portion of the Coimbra Fm (UA and UB), evidenced by the occurrence of dolomitic and microbial (including stromatolites) facies with thin limestone levels displaying low-diversity assemblages of bivalves and gastropods, and typically brackish and restricted marine ostracods [see Azerêdo *et al.*, 2010, Cabral *et al.*, 2013, 2015]. The upwards disappearance of these facies is concomitant with an increase in marine macroinvertebrate fauna (essentially bivalves) in the overlying UC and UD, which also show dominance of marine ostracods, though still bearing restricted marine and even an interval with brackish ostracods. Overall, these features suggest common alternation between more restricted-marine and slightly more open-marine influence, the latter becoming increasingly stronger and indicating a gradual rise in relative sea level [Azerêdo *et al.*, 2010, Cabral *et al.*, 2013, 2015]. Sustained conditions of fully saline (euhaline) conditions and clear marine influence are observed in the uppermost part of the Coimbra Fm (UH), inferred from a marked increase in brachiopods diversity and the sporadic occurrence of ahermatypic corals [see also Paredes *et al.*, 2013, 2016]. Frequent minor movements (induced by differential regional subsidence?), may have promoted the opening and closing pulses of the marine influence in the shallow environment, leading to the common changes from more restricted- into more open marine conditions [Azerêdo *et al.*, 2010]. On the other hand, the disappearance of the endemic ammonite faunas [Domergues *et al.*, 2010] and the occurrence of *Aegasteroceras* sp., *Gagaticeras gagateum*, *Oxynoticeras simpsoni*, and *Oxynoticeras oxynotum*, recognised in other northwestern European basins, testifies a strong connexion/opening of the Lusitanian Basin to the neighbouring basins during the Oxynotum Chronozone.

At a broad scale within the basin, the sedimentological variation of the different subunits for the Coimbra Fm shows a sequential arrangement, highlighted by recognizing various sedimentary discontinuities and biofacies and the occurrence of the organic-rich intervals. Following the sequential interpretation of Duarte *et al.* [2010] for the overlying Sinemurian and Pliensbachian units [Água

de Madeiros, Vale das Fontes and Lemedé formations; see also Silva *et al.*, 2015], the succession of the Coimbra Fm is part of the transgressive system tracts of a 2nd-order transgressive–regressive facies cycle with its maximum flooding interval around the Sinemurian–Pliensbachian transition [top of Polvoeira Member; see Duarte *et al.*, 2010, 2014a]. This long-lasting transgressive phase involved three 3rd-order subordinate maximum flooding episodes, corresponding to the more argillaceous and organic-rich intervals of the succession, in the middle-upper part of UD (**FI1**), UF (**FI2**), and in the lower-middle part of UH (**FI3**) (Figures 3D, 4B–D and 5). Despite their endemic character, the first two phases of flooding are associated with abundant ammonites (Figure 4B,C). According to the available ammonite data [also based on Dommergues *et al.*, 2010], the sedimentary record of these flooding events (**FI1**, **FI2** and **FI3**) are tentatively dated from the Obtusum Chronozone, with the latter close to the Obtusum–Oxynotum chronozones boundary.

5.4. *Stable carbon isotope chemostratigraphy and organic matter preservation events (OMPIs)*

The stable carbon isotopic data from bulk carbonate presented here for the lower?–upper Sinemurian exposed at S. Pedro de Moel mostly fall within the normal range for carbonate deposits of marine origin, between 0 to 2.5‰ [e.g. Marshall, 1992]. Vertically, the $\delta^{13}\text{C}_{\text{carb}}$ curve shows several negative excursions (Figure 5). The largest of these (with an amplitude of about 8‰) is observed between UE–UG (~25 m), another relatively large amplitude excursion was previously observed around the Sinemurian–Pliensbachian boundary [see Duarte *et al.*, 2014a].

These two negative $\delta^{13}\text{C}_{\text{carb}}$ negative excursions are coincident with organic-rich facies. The same is true for the slight shift (IP2) recorded in the most organic-rich part of UH (Figure 5). Considering the relationship between negative $\delta^{13}\text{C}_{\text{carb}}$ and organic matter deposition, and as previously discussed in Duarte *et al.* [2014a] for the younger negative excursion contemporaneous with the Sinemurian–Pliensbachian boundary event [S-PBE cf. Korte and Hesselbo, 2011], it is here interpreted that the marked increase bulk carbonate ^{12}C in these intervals (when comparing with the rest of the succession) is likely due to oxidation of organic matter (via anaerobic

bacteria for example) and incorporation of organic-related ^{12}C enriched carbon into diagenetic carbonates [e.g. Marshall, 1992]. Although in the case of the Sinemurian–Pliensbachian negative excursion this effect is most evident in a very small number of carbonate beds of clear early diagenetic origin, (likely influenced by anaerobic oxidation products of organic matter), it seems much more pervasive in UF of the Coimbra Fm. In addition, and despite the absence of significant correlation between $\delta^{18}\text{O}_{\text{carb}}$ and $\delta^{13}\text{C}_{\text{carb}}$ (see above) suggesting that late burial diagenetic may have had little influence in the generality of stable carbon isotopic data, diagenetic influence in the isotopic signal of UF is particularly evident, highlighted in the better correlation between $\delta^{18}\text{O}_{\text{carb}}$ and $\delta^{13}\text{C}_{\text{carb}}$, with a Pearson $R^2 = 0.7$ (Figure 1 in Supplementary data). Therefore, the negative excursions in $\delta^{13}\text{C}_{\text{carb}}$ from the Coimbra Fm are likely of diagenetic origin and of local/basinal significance; the influence of products derived from the biological oxidation of organic matter in diagenetic carbonates makes it difficult to extract regional/global palaeoenvironmental information from these data, although this information might be imprinted in the observed trends. It is increasingly evident that $\delta^{13}\text{C}_{\text{carb}}$ curves are very sensitive to diagenetic alteration, and this must be taken into consideration when interpreting these data. Even if the observed excursions of the Coimbra Fm are contemporaneous of regional/global events, their amplitude, stratigraphic location, and absolute values are likely to be biased [e.g. Bougeault *et al.*, 2017, Duarte *et al.*, 2014a, Munier *et al.*, 2021, Silva *et al.*, 2011, 2021, Ullmann *et al.*, 2022].

The organic-rich sediments of UD–UG were suggested to be contemporaneous with the regional late Sinemurian (Obtusum, Obtusum–Stellare) Organic Matter Preservation Interval [OMPI S5; Silva *et al.*, 2021]. By extension, the younger negative carbon isotopic excursion and organic-rich sediments associated with the regional (superregional?) Sinemurian–Pliensbachian OMPI [see Silva *et al.*, 2021] are well dated, both by ammonites and calcareous nannofossils [e.g. Boussaha *et al.*, 2014, Duarte *et al.*, 2014a, Ferreira *et al.*, 2019] and are now also recognized in several European basins [e.g. Franceschi *et al.*, 2019, Korte and Hesselbo, 2011, Masetti *et al.*, 2017, Mercuzot *et al.*, 2020, Munier *et al.*, 2021, Peti *et al.*, 2017, Price *et al.*, 2016, Schöllhorn *et al.*, 2020, Silva *et al.*, 2021, Ullmann *et al.*, 2022]. For a review of

the processes linking dissolved inorganic and organic carbon in seawater, the following sources may be referred to Silva *et al.* [2017, 2020, 2021].

A negative carbon isotope excursion (CIE) that has recently gained international relevance is the so-called Sinemurian *Liasidium* Event, dated from the Obtusum Chronozone (Denotatus Subchronozone)–Oxynotum Chronozone (Oxynotum Subchronozone) [Hesselbo *et al.*, 2020, Riding *et al.*, 2013] and characterized by the acme of the *Liasidium variabile* dinoflagellate and high abundances of *Classopollis classoides*, suggesting an association of high land and sea temperatures [Hesselbo *et al.*, 2020, Munier *et al.*, 2021, Riding *et al.*, 2013, Schöllhorn *et al.*, 2020, Storm *et al.*, 2020]. Given the nature of the $\delta^{13}\text{C}_{\text{carb}}$ curve of the Coimbra Fm and its biostratigraphic uncertainty, a correlation with data from neighbouring basins is, at this stage, ill-advised. Isotopic studies in different carbon-bearing substrates are ongoing; it was previously suggested that the organic-rich interval of UH (or even part of UF–UG) could correspond to the Early Jurassic Sinemurian *Liasidium* Event [Silva *et al.*, 2021].

6. Conclusions

From an integrated stratigraphic analysis of the Lower Jurassic carbonate succession (Coimbra Fm) of the Lusitanian Basin cropping out at S. Pedro de Moel, the following conclusions are drawn:

- (i) The Coimbra Fm shows a large diversity of calcareous facies and, less abundant, dolostones and shales, and is subdivided into eight informal units (UA to UF), rich in benthic macrofauna and deposited in a shallow-water carbonate ramp.
- (ii) The rare occurrence of ammonites, the majority endemic (genus *Ptychariatites*), allows assigning the Coimbra Fm to the lower?–upper Sinemurian (Simpsoni Subchronozone, Oxynotum Chronozone).
- (iii) Like the overlying Água de Madeiros Fm, the Coimbra Fm is locally rich in organic matter, especially UF (assigned to the Stellare–Denotatus Subchronozone transition), with total organic carbon reaching values around 10 wt%.
- (iv) The studied succession is transgressive and belongs to a long-lasting 2nd-order

transgressive phase that shows its maximum flooding around the Sinemurian–Pliensbachian transition. Three 3rd-order maximum flooding intervals are identified across the Coimbra Fm, materialized by an increase in the number of organic-rich levels and ammonite fossils.

- (v) The vertical variation in $\delta^{13}\text{C}_{\text{carb}}$ is characterized by relatively normal marine values ($\sim 2\text{‰}$); however, several negative excursions are associated with the organic-rich sediments, with a maximum amplitude reaching 8‰ in the Obtusum Chronozone. These shifts in bulk carbonate $\delta^{13}\text{C}_{\text{carb}}$ are interpreted to be of diagenetic origin and, therefore, of local/basinal significance. However, it cannot be discarded that a regional/global signal is imprinted in the observed trends.

Conflicts of interest

Authors have no conflict of interest to declare.

Acknowledgements

This study was supported by Fundação para a Ciência e Tecnologia (FCT), through the strategic project UID/MAR/04292/2019 granted to the Marine and Environmental Sciences Centre (MARE) and to Research Group UCM 910431: Mesozoic Biotic Processes. ACA acknowledges support by FCT, I.P./MCTES, National Funds (PIDDAC) - UIDB/50019/2020, Authors thank the LAFO-UFRJ for the total organic carbon analysis. The authors thank the editor C. Lezin and P. Pellenard and an anonymous reviewer for their helpful comments that much improved the original version of this manuscript.

Supplementary data

Supporting information for this article is available on the journal's website under <https://doi.org/10.5802/crgeos.144> or from the author.

References

- Azerêdo, A. C., Duarte, L. V., and Silva, R. L. (2014). Configuração sequencial em ciclos (2ª ordem) de

- fácies transgressivas-regressivas do Jurássico Inferior e Médio da Bacia Lusitânica (Portugal). *Comun. Geol.*, 101(Especial I), 383–386.
- Azerêdo, A. C., Silva, R. L., Duarte, L. V., and Cabral, M. C. (2010). Subtidal stromatolites from the Sinemurian of the Lusitanian Basin (Portugal). *Facies*, 56, 211–230.
- Bougeault, C., Pellenard, P., Deconinck, J. F., Hesselbo, S. P., Dommergues, J. L., Bruneau, L., Cocquerez, T., Laffont, R., Huret, E., and Thibault, N. (2017). Climatic and palaeoceanographic changes during the Pliensbachian (Early Jurassic) inferred from clay mineralogy and stable isotope (CO) geochemistry (NW Europe). *Global Planet. Change*, 149, 139–152.
- Boussaha, M., Pittet, B., Mattioli, E., and Duarte, L. V. (2014). Spatial characterization of the late Sinemurian (Early Jurassic) palaeoenvironments in the Lusitanian Basin. *Palaeogeogr. Palaeoclimatol. Palaeoecol.*, 409, 320–339.
- Brito, M., Rodrigues, R., Baptista, R., Duarte, L. V., Azerêdo, A. C., and Jones, C. M. (2017). Geochemical characterization of oils and their correlation with Jurassic source rocks from the Lusitanian Basin (Portugal). *Mar. Pet. Geol.*, 85, 151–176.
- Cabral, M. C., Colin, J.-P., Azerêdo, A. C., Silva, R. L., and Duarte, L. V. (2013). Associações de ostracodos da Formação de Coimbra (Sinemuriano) de S. Pedro de Moel (Bacia Lusitânica): valor paleoecológico e paleobiogeográfico. *Comun. Geol.*, 100(Especial I), 43–47.
- Cabral, M. C., Colin, J.-P., Azerêdo, A. C., Silva, R. L., and Duarte, L. V. (2015). Brackish and marine ostracode assemblages from the Sinemurian of western Portugal, with description of new species. *Micro-paleontology*, 61(1–2), 3–24.
- Choffat, P. L. (1880). *Étude stratigraphique et paléontologique des terrains jurassiques du Portugal. Première livraison - Le Lias et le Dogger au Nord du Tage*. Memórias Secções Trabalhos Geológicos de Portugal. l'Academie royale des sciences, Lisbonne.
- Comas-Rengifo, M. J., Duarte, L. V., Goy, A., Paredes, R., and Silva, R. L. (2013). El Sinemuriense Superior (cronozonas Oxynotum y Raricostatum) en la región de S. Pedro de Moel (Cuenca Lusitânica, Portugal). *Comun. Geol.*, 100(Especial I), 15–19.
- Comas-Rengifo, M. J., Goy, A., Piñuela, L., García-Ramos, J. C., Suárez Vega, L. C., and Paredes, R. (2021). El Sinemuriense superior: cronozonas Obtusum y Oxynotum en Asturias, España. Ammonoideos y correlación con otras cuencas del oeste de Europa. [Upper Sinemurian: Obtusum and Oxynotum chronozones in Asturias, Spain. Ammonoids and correlation with other western European basins]. *Spanish J. Palaeontol.*, 36(1), 19–50.
- Corna, M., Dommergues, J.-L., Meister, C., and Mouterde, R. (1997). Sinémurien. In Cariou, E. and Hantzpergue, P., editors, *Biostratigraphie du Jurassique Ouest-Européen et Méditerranéen: Zonations Parallèles et Distribution des Invertébrés et Microfossiles*, volume 17 of *Bulletin des Centres de Recherche Exploration-Production Elf-Aquitaine, Mémoire*, pages 9–14. Elf Aquitaine, Pau.
- Correia, V. F., Riding, J. B., Duarte, L. V., Fernandes, P., and Pereira, Z. (2018). The Early Jurassic palynostratigraphy of the Lusitanian Basin, western Portugal. *Geobios*, (6), 537–557.
- Dimuccio, L. A., Duarte, L. V., and Cunha, L. (2016). Definição litostratigráfica da sucessão calcó-dolomítica do Jurássico Inferior da região de Coimbra-Penela (Bacia Lusitânica, Portugal). *Comun. Geol.*, 103, 77–96.
- Dommergues, J.-L. (1987). L'évolution chez les Ammonitina du Lias Moyen (Carixien, Domerien basal) en Europe occidentale. *Doc. Lab. Géol. Lyon*, 98, 1–297.
- Dommergues, J.-L., Meister, C., Neige, P., and Rocha, R. B. (2004). Endemic Sinemurian (Early Jurassic) ammonites from the Lusitanian Basin (Portugal). *Rev. Paléobiol.*, 23(2), 529–549.
- Dommergues, J.-L., Meister, C., and Rocha, R. B. (2010). The Sinemurian ammonites of the Lusitanian Basin (Portugal): an example of complex endemic evolution. *Palaeodiversity*, 3, 139–167.
- Duarte, L. V. (2004). The geological heritage of the Lower Jurassic of Central Portugal: selected sites, inventory and main scientific arguments. *Riv. Ital. Paleontol. Stratigr.*, 110, 381–388.
- Duarte, L. V., Comas-Rengifo, M. J., Silva, R. L., Paredes, R., and Goy, A. (2014a). Carbon isotope stratigraphy and ammonite biostratigraphy across the Sinemurian-Pliensbachian boundary in the western Iberian margin. *Bull. Geosci.*, 89, 719–738.
- Duarte, L. V., Silva, R. L., Azerêdo, A. C., Paredes, R., and Rita, P. (2014b). A Formação de Coimbra na região de S. Pedro de Moel (Oeste de Portugal).

- Caracterização litológica, definição litostratigráfica e interpretação sequencial. IX CNG/2° CoGePLiP, Porto 2014. *Comun. Geol.*, 101(Especial I), 421–425.
- Duarte, L. V., Silva, R. L., Félix, F. F., Comas-Rengifo, M. J., Rocha, R. B., Mattioli, E., Paredes, R., Mendonça Filho, J. G., and Cabral, M. C. (2017). The Jurassic of the Peniche Peninsula (Portugal): scientific, educational and science popularization relevance. *Rev. Soc. Geol. España*, 30(1), 55–70.
- Duarte, L. V., Silva, R. L., and Mendonça Filho, J. G. (2013). Variação do COT e pirólise Rock-Eval do Jurássico Inferior da região de S. Pedro de Moel. Potencial de geração de hidrocarbonetos. *Comun. Geol.*, 100(Especial I), 107–111.
- Duarte, L. V., Silva, R. L., Mendonça Filho, J. G., Poças Ribeiro, N., and Chagas, R. B. A. (2012). High resolution stratigraphy, palynofacies and source rock potential of the Água de Madeiros Formation (Lower Jurassic), Lusitanian Basin, Portugal. *J. Pet. Geol.*, 35(2), 105–126.
- Duarte, L. V., Silva, R. L., Oliveira, L. C. V., Comas-Rengifo, M. J., and Silva, F. (2010). Organic-rich facies in the Sinemurian and Pliensbachian of the Lusitanian Basin, Portugal: total organic carbon distribution and relation to transgressive–regressive facies cycles. *Geol. Acta*, 8, 325–340.
- Duarte, L. V. and Soares, A. F. (2002). Litostratigrafia das séries margo-calcárias do Jurássico inferior da Bacia Lusitânica (Portugal). *Comun. Inst. Geol. Mineiro*, 89, 135–154.
- Ferreira, J., Mattioli, E., Sucherás-Marx, B., Giraud, F., Duarte, L. V., Pittet, B., Suan, G., Hassler, A., and Spangenberg, J. E. (2019). Western Tethys Early and Middle Jurassic calcareous nannofossil biostratigraphy. *Earth-Sci. Rev.*, 197, article no. 102908.
- Franceschi, M., Corso, J. D., Cobianchi, M., Roghi, G., Penasa, L., Picotti, V., and Preto, N. (2019). Tethyan carbonate platform transformations during the Early Jurassic (Sinemurian–Pliensbachian, Southern Alps): Comparison with the Late Triassic Carnian Pluvial Episode. *Geol. Soc. Am. Bull.*, 131, 1255–1275.
- Hesselbo, S. P., Hudson, A. J. L., Huggett, J. M., Leng, M. J., Riding, J. B., and Ullmann, C. V. (2020). Palynological, geochemical, and mineralogical characteristics of the Early Jurassic Liasidium Event in the Cleveland Basin, Yorkshire, UK. *Newsl. Stratigr.*, 53(2), 191–211.
- Hesselbo, S. P., Jenkyns, H. C., Duarte, L. V., and Oliveira, L. C. V. (2007). Carbon-isotope record of the Early Jurassic (Toarcian) Oceanic Anoxic Event from fossil wood and marine carbonate (Lusitanian Basin, Portugal). *Earth Planet. Sci. Lett.*, 253, 455–470.
- Hiscott, R. N., Wilson, R. C., Gradstein, F. M., Pujalte, V., Garcia-Mondéjar, J., Boudreau, R. R., and Wishart, H. A. (1990). Comparative stratigraphy and subsidence history of Mesozoic rift basins of North Atlantic. *Am. Assoc. Pet. Geol. Bull.*, 74(1), 60–76.
- Howarth, M. K. (2002). The Lower Lias of Robin Hood's Bay, Yorkshire, and the work of Leslie Bairstow. *Bull. Nat. Hist. Mus.*, 58, 81–152.
- Knaust, D. (2013). The ichnogenus *Rhizocorallium*: Classification, trace makers, palaeoenvironments and evolution. *Earth-Sci. Rev.*, 126, 1–47.
- Korte, C. and Hesselbo, S. P. (2011). Shallow marine carbon and oxygen isotope and elemental records indicate icehouse-greenhouse cycles during the Early Jurassic. *Paleoceanography*, 26, article no. PA4219.
- Kullberg, J. C., Rocha, R. B., Soares, A. F., Rey, J., Terinha, P., Azerêdo, A. C., Callapez, P., Duarte, L. V., Kullberg, M. C., Martins, L., Miranda, R., Alves, C., Mata, J., Madeira, J., Mateus, O., Moreira, M., and Nogueira, C. R. (2013). A Bacia Lusitânica: estratigrafia paleogeografia e tectónica. In Dias, R., Araújo, A., Terinha, P., and Kullberg, J. C., editors, *Geologia de Portugal*, volume II, pages 195–347. Livraria Escolar Editora, Lisboa.
- Marshall, J. D. (1992). Climatic and oceanographic isotopic signals from carbonate rock record and their preservation. *Geol. Mag.*, 192, 143–160.
- Masetti, D., Figus, B., Jenkyns, H., Barattolo, F., Mattioli, E., and Posenato, R. (2017). Carbon-isotope anomalies and demise of carbonate platforms in the Sinemurian (Early Jurassic) of the Tethyan region: evidence from the Southern Alps (Northern Italy). *Geol. Mag.*, 154, 625–650.
- Mendonça Filho, J. G., Menezes, T. R., Mendonça, J. O., Oliveira, A. D., Silva, T. F., Rondon, N. F., and Silva, F. S. (2012). Organic facies: Palynofacies and organic geochemistry approaches. In Panagiotaras, D., editor, *Geochemistry—Earth's System Processes*, pages 211–248. In Tech, Rijeka.
- Mercuzot, M., Pellenard, P., Durllet, C., Bougeault, C., Meister, C., Dommergues, J. L., Thibault, N., Baudin, F., Mathieu, O., Bruneau, L., and Huret, E.

- (2020). Carbon-isotope events during the Pliensbachian (Lower Jurassic) on the African and European margins of the NW Tethyan Realm. *Newsl. Stratigr.*, 53(1), 41–69.
- Mouterde, R. and Ruget-Perrot, Ch. (1975). Esquisse de la paléogéographie du Jurassique inférieur et moyen au Portugal. *Bull. Soc. Géol. Fr.*, XVII(5), 779–786.
- Munier, T., Deconinck, J.-F., Pellenard, P., Hesselbo, S. P., Riding, J. B., Ullmann, C. V., Bougeault, C., Mercuzot, M., Santoni, A.-L., Huret, É., and Landrein, P. (2021). Million-year-scale alternation of warm-humid and semi-arid periods as a mid-latitude climate mode in the Early Jurassic (Late Sinemurian, Laurusian Seaway). *Clim. Past Discuss.*, 17, 1547–1566.
- Oliveira, L. C. V., Rodrigues, R., Duarte, L. V., and Lemos, V. (2006). Avaliação do potencial gerador de petróleo e interpretação paleoambiental com base em biomarcadores e isótopos estáveis do carbono da seção Pliensbaquiano-Toarciano inferior (Jurássico inferior) da região de Peniche (Bacia Lusitânica, Portugal). *Bol. Geociênc. Petrobras*, 14, 207–234.
- Page, K. N. (2003). The Lower Jurassic of Europe: its subdivision and correlation. *Geol. Surv. Denmark Greenland Bull.*, 1, 23–59.
- Paredes, R., Comas-Rengifo, M. J., and Duarte, L. V. (2013). Moluscos bivalves da Formação de Água de Madeiros (Sinemuriano superior) da Bacia Lusitânica (Portugal). *Comun. Geol.*, 100(Especial I), 21–27.
- Paredes, R., Comas-Rengifo, M. J., Duarte, L. V., García Joral, F., and Goy, A. (2016). The earliest Jurassic brachiopod record in the Lusitanian Basin: palaeoecology insights. Actas de la XXXII Jornadas de la Sociedad Española de Paleontología. *Cuad. Mus. Geominero*, 20, 465–470.
- Peti, L., Thibault, N., Clémence, M.-E., Korte, C., Dommergues, J.-L., Bougeault, C., Pellenard, P., Jelby, M. E., and Ullmann, C. V. (2017). Sinemurian-Pliensbachian calcareous nannofossil biostratigraphy and organic carbon isotope stratigraphy in the Paris Basin: Calibration to the ammonite biozonation of NW Europe. *Palaeogeogr. Palaeoclimatol. Palaeoecol.*, 468, 142–161.
- Poças Ribeiro, N., Mendonça Filho, J. G., Duarte, L. V., Silva, R. L., Mendonça, J. O., and Silva, T. F. (2013). Palynofacies and organic geochemistry of the Sinemurian carbonate deposits in the western Lusitanian Basin (Portugal): Coimbra and Água de Madeiros formations. *Int. J. Coal Geol.*, 111, 37–52.
- Price, G. D., Baker, S. J., VanDeVelde, J., and Clémence, M.-E. (2016). High-resolution carbon cycle and seawater temperature evolution during the Early Jurassic (Sinemurian-Early Pliensbachian). *Geochem. Geophys. Geosys.*, 17(10), 3917–3928.
- Riding, J. B., Leng, M. J., Kender, S., Hesselbo, S. P., and Feist-Burkhardt, S. (2013). Isotopic and palynological evidence for a new Early Jurassic environmental perturbation. *Palaeogeogr. Palaeoclimatol. Palaeoecol.*, 374, 16–27.
- Rocha, R. B., Matioli, E., Duarte, L. V., Pittet, B., Elmi, S., Mouterde, R., Cabral, M. C., Comas-Rengifo, M. J., Gómez, J. J., Goy, A., Hesselbo, S. P., Jenkyns, H. C., Littler, K., Mailliot, S., Oliveira, L. C. V., Osete, M. L., Perilli, N., Pinto, S., Ruget, C. H., and Suan, G. (2016). Toarcian stage of lower Jurassic defined by the Global Boundary Stratotype Section and Point (GSSP) at the Peniche section (Portugal). *Episodes*, 39(3), 460–481.
- Schöllhorn, I., Adatte, T., van de Schootbrugge, B., Houben, A., Charbonnier, G., Janssen, N., and Föllmi, K. B. (2020). Climate and environmental response to the break-up of Pangea during the Early Jurassic (Hettangian-Pliensbachian); the Dorset coast (UK) revisited. *Glob. Planet. Change*, 185, article no. 103096.
- Sêco, S. L. R., Duarte, L. V., Pereira, A. J. S. C., and Silva, R. L. (2018). Field gamma-ray patterns and stratigraphic reinterpretation of offshore well-log data from Lower Jurassic organic-rich units of the Lusitanian Basin (Portugal). *Mar. Pet. Geol.*, 98, 860–872.
- Silva, R. L., Carlisle, C., and Wach, G. (2017). The carbon isotopic record of the Lower Jurassic in the Slyne Basin (Ireland). *Mar. Pet. Geol.*, 86, 499–511.
- Silva, R. L. and Duarte, L. V. (2015). Organic matter production and preservation in the Lusitanian Basin (Portugal) and Pliensbachian climatic hot snaps. *Glob. Planet. Change*, 131, 24–34.
- Silva, R. L., Duarte, L. V., and Comas-Rengifo, M. J. (2015). Carbon isotope chemostratigraphy of Lower Jurassic carbonate deposits, Lusitanian Basin (Portugal): Implications and limitations to the application in sequence stratigraphic studies. In Ramkumar, M., editor, *Chemostratigraphy: Concepts, Techniques, and Applications*, pages 341–371.

- Elsevier, Amsterdam.
- Silva, R. L., Duarte, L. V., Comas-Rengifo, M. J., Mendonça Filho, J. J., and Azerêdo, A. C. (2011). Update of the carbon and oxygen isotopic records of the Early–Late Pliensbachian: insights from the organic-rich hemipelagic series of the Lusitanian Basin (Portugal). *Chem. Geol.*, 283, 177–184.
- Silva, R. L., Duarte, L. V., Wach, G., Morrison, N., and Campbell, T. (2020). Oceanic organic carbon as a possible first-order control on the carbon cycle during the Bathonian–Callovian. *Glob. Planet. Change*, 184, article no. 103058.
- Silva, R. L., Duarte, L. V., Wach, G. D., Ruhl, M., Sadki, D., Gómez, J. J., Hesselbo, S. P., Xu, W., O’Connor, D., Rodrigues, B., and Mendonça Filho, J. G. (2021). An Early Jurassic (Sinemurian–Toarcian) stratigraphic framework for the occurrence of Organic Matter Preservation Intervals (OMPIs). *Earth-Sci. Rev.*, 221, article no. 103780.
- Soares, A. F., Rocha, R. B., Elmi, S., Henriques, M. H., Mouterde, R., Almeras, Y., Ruget, C., Marques, J., Duarte, L. V., Carapito, M. C., and Kullberg, J. (1993). Le sous-bassin nord lusitanien (Portugal) du Trias au Jurassique moyen: histoire d’un « rift avorté ». *C. R. Acad. Sci., Paris, II*, 317, 1659–1666.
- Storm, M. S., Hesselbo, S. P., Jenkyns, H. C., Ruhl, M., Ullmann, C. V., Xu, W., Leng, M. J., Riding, J. B., and Gorbatenko, O. (2020). Orbital pacing and secular evolution of the Early Jurassic carbon cycle. *Proc. Natl. Acad. Sci. USA*, 117(8), 3974–3982.
- Suan, G., Mattioli, E., Pittet, B., Lécuyer, C., Suchéras-Marx, B., Duarte, L. V., Philippe, M., Reggiani, M. L., and Martineau, F. (2010). Secular environmental precursors of Early Toarcian (Jurassic) extreme climate changes. *Earth Planet. Sci. Lett.*, 290, 448–458.
- Thierry, J. and Barrier, E. (2000). Middle Toarcian. In Dercourt, J., Gaetani, M., Vrielynck, B., Barrier, E. B., Biju-Duval, B., Brunet, M. E., Cadet, J. P., Crasquin, S., and Sandulescu, M., editors, *Atlas Peri-Tethys, Paleogeographic Maps*. CCGM/CGMW, Paris. Map 8.
- Ullmann, C. V., Szücs, D., Jiang, M., Hudson, A. J. L., and Hesselbo, S. P. (2022). Geochemistry of macrofossil, bulk rock and secondary calcite in the Early Jurassic strata of the Llanbedr (Mochras Farm) drill core, Cardigan Bay Basin, Wales, UK. *J. Geol. Soc.*, 179(1), article no. jgs2021-018.
- Vitón, I., Comas-Rengifo, M. J., and Paredes, R. (2020). Early Jurassic (Sinemurian) gastropods from the Lusitanian Basin (west of Portugal). *Span. J. Palaeontol.*, 35(2), 147–166.