



INSTITUT DE FRANCE
Académie des sciences

Comptes Rendus

Mécanique

Yutao Li, Antoine Bordino, Augustin Guibaud, David Montero,
Jean-Marie Citerne, Jean-Louis Consalvi, Jose Torero and Guillaume
Legros

**Electric sampling of soot particles in spreading non-premixed flames:
methodology and influence of gravity**

Supplementary material to the article available at:
<https://doi.org/10.5802/crmeca.182>



This article is licensed under the
CREATIVE COMMONS ATTRIBUTION 4.0 INTERNATIONAL LICENSE.
<http://creativecommons.org/licenses/by/4.0/>



*Les Comptes Rendus. Mécanique sont membres du
Centre Mersenne pour l'édition scientifique ouverte*

www.centre-mersenne.org

e-ISSN : 1873-7234



Supplementary material: Electric sampling of soot particles in spreading non-premixed flames: methodology and influence of gravity

Yutao Li^{*}, ^a, Antoine Bordino^b, Augustin Guibaud^c, David Montero^d,
Jean-Marie Citerne^a, Jean-Louis Consalvi^e, Jose Torero^c
and Guillaume Legros^{a, f}

^a Institut Jean Le Rond d'Alembert/UMR CNRS 7190, Sorbonne Université, Paris
F-75005, France

^b Ecole Polytechnique, Palaiseau, France

^c Department of Civil, Environmental and Geomatic Engineering, University College
London, London WC1E6BT, UK

^d Fédération de Chimie et Matériaux de Paris-Centre, Sorbonne Université, Paris
F-75005, France

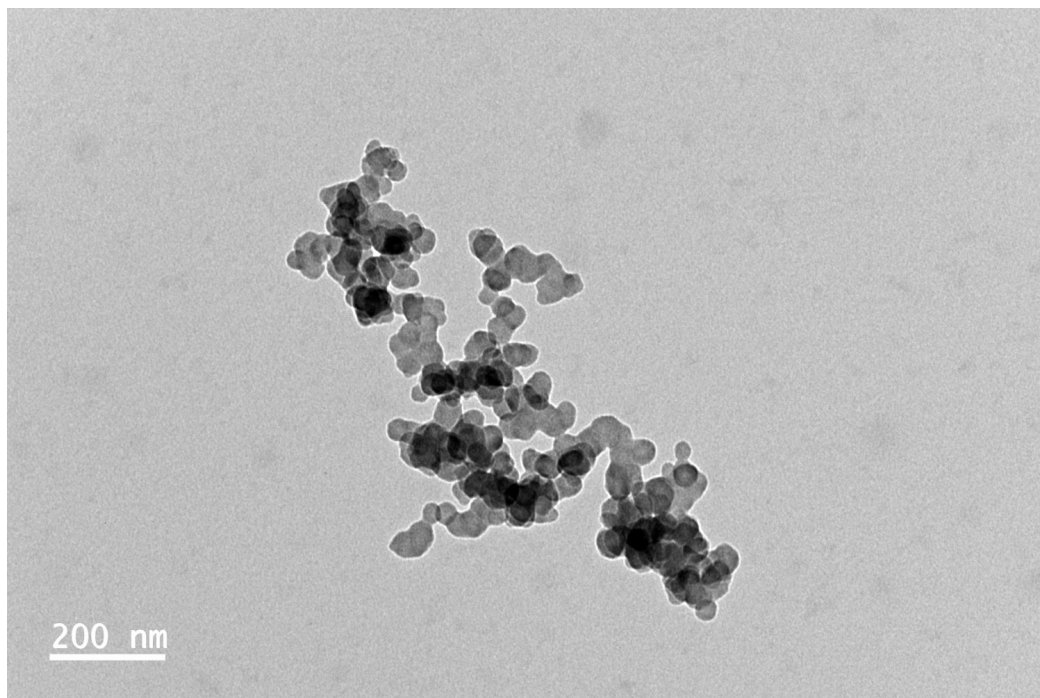
^e Aix-Marseille Université, CNRS, IUSTI UMR 7343, 5 rue E. Fermi, 13013 Marseille,
France

^f CNRS-ICARE / Univ. Orléans, 1C Avenue de la Recherche Scientifique, 45071 Orléans
Cedex 2, France

E-mails: yutao.li@sorbonne-universite.fr (Y. LI), antoine.bordino@polytechnique.edu
(A. Bordino), a.guibaud@ucl.ac.uk (A. Guibaud),
david.montero@sorbonne-universite.fr (D. Montero),
jean-marie.citerne@sorbonne-universite.fr (J.-M. Citerne),
jean-louis.consalvi@univ-amu.fr (J.-L. Consalvi), j.torero@ucl.ac.uk (J. Torero),
guillaume.legros@sorbonne-universite.fr (G. Legros)

Funding. The authors feel grateful to the Centre National d'Etudes Spatiales (CNES) for its financial support under Contract No. 130615.

* Corresponding author.



Supplementary Figure S1. TEM image of soot particles sampled in microgravity at 1st grid with a magnification of 15kX.

Supplementary Table S1. Primary particles results of Figure S1.

Number	CenterPosition_X_pixel	CenterPosition_Y_pixel	Radius_nm	Segmentation_Method
1	1415.6	526.2	19.3	CHT
2	2572.0	2269.2	24.4	CHT
3	2598.9	1698.2	30.3	CHT
4	1667.8	1195.0	21.0	CHT
5	1561.5	813.7	21.7	CHT
6	2100.0	1946.9	21.0	CHT
7	1587.7	1484.9	33.6	CHT
8	1110.6	970.1	33.0	CHT
9	1657.0	1143.4	22.7	CHT
10	1578.4	1114.2	18.5	CHT
11	2014.3	1714.2	21.5	CHT
12	1498.3	1278.3	20.3	CHT
13	1558.7	1046.0	26.7	CHT
14	2006.5	1719.3	22.9	CHT
15	2151.3	1545.0	30.4	CHT
16	2542.3	1767.9	19.9	CHT
17	2674.5	1823.4	21.2	CHT
18	2690.5	2321.0	35.8	CHT
19	1489.2	2069.1	17.4	CHT
20	1123.0	918.0	18.1	CHT
21	1518.2	623.0	20.2	CHT
22	2445.7	1706.0	48.7	CHT
23	1798.8	879.8	23.4	CHT
24	1183.7	1016.6	26.2	CHT
25	1378.2	1199.3	24.2	CHT
26	1519.1	1367.4	18.0	CHT
27	1626.0	878.5	20.7	CHT
28	2274.2	1600.8	20.8	CHT
29	2015.1	1322.6	24.3	CHT
30	1989.2	1037.7	18.2	CHT
31	1731.8	1849.3	19.9	CHT
32	1999.4	1976.1	22.5	CHT
33	1817.8	1266.3	24.3	CHT
34	1572.3	2002.9	17.7	CHT
35	1844.2	1110.5	28.5	CHT
36	2320.9	1588.0	20.7	CHT
37	1570.4	950.6	22.6	CHT
38	1935.6	1977.9	18.4	CHT
39	2171.1	1836.2	38.8	CHT
40	1693.6	1922.1	21.8	CHT
41	1999.0	1337.9	38.3	CHT
42	1618.0	2035.3	22.4	CHT
43	1848.5	869.6	23.7	CHT
44	2328.6	2098.2	18.1	CHT
45	1544.2	1403.9	17.1	CHT

(continued on next page)

Supplementary Table S1. (continued)

Number	CenterPosition_X_pixel	CenterPosition_Y_pixel	Radius_nm	Segmentation_Method
46	1448.1	774.3	25.1	CHT
47	1229.1	717.6	23.5	CHT
48	2052.2	1427.9	31.9	CHT
49	2399.8	2131.6	18.8	CHT
50	2292.9	2049.9	25.6	CHT
51	1507.0	1598.5	18.8	CHT
52	1164.5	882.0	20.2	CHT
53	2632.6	1782.2	22.4	CHT
54	1632.9	1936.1	32.1	CHT
55	1620.5	917.4	19.9	CHT
56	2310.9	1920.1	21.0	CHT
57	2770.1	2119.2	46.6	CHT
58	1801.2	1580.8	34.4	CHT
59	2189.9	1834.5	22.4	CHT
60	1156.5	1009.0	22.6	CHT
61	2376.0	1634.1	25.0	CHT
62	1501.1	632.1	33.3	CHT
63	2042.1	1418.2	18.0	CHT
64	1973.6	1179.9	19.8	CHT
65	1329.2	1118.0	25.9	CHT
66	2076.8	1448.3	18.1	CHT
67	2641.3	2287.1	19.6	CHT
68	1536.5	1716.2	24.0	CHT
69	1759.5	1891.1	20.9	CHT
70	1484.2	1610.2	19.0	CHT
71	1501.7	1625.0	39.6	CHT
72	1836.7	959.3	20.1	CHT
73	1918.9	1053.4	19.6	CHT
74	2440.1	2148.3	18.8	CHT
75	1729.3	1376.0	20.2	CHT
76	1134.5	900.5	20.8	CHT
77	2068.5	1111.5	24.9	CHT
78	2218.7	1765.4	25.0	CHT
79	2764.3	2185.3	20.9	CHT
80	1596.4	2072.8	21.1	CHT
81	1550.0	1737.0	19.6	CHT
82	1618.8	1130.1	17.9	CHT
83	1461.6	1184.6	23.9	CHT
84	2685.6	2336.4	19.5	CHT
85	1255.1	1008.4	22.0	CHT
86	1993.3	1632.5	29.4	CHT
87	1938.9	1791.4	28.1	CHT
88	1902.9	1148.3	39.4	CHT
89	1531.3	2063.1	48.8	CHT
90	1979.6	932.3	18.3	CHT

(continued on next page)

Supplementary Table S1. (continued)

Number	CenterPosition_X_pixel	CenterPosition_Y_pixel	Radius_nm	Segmentation_Method
91	1924.9	1132.1	17.9	CHT
92	2298.1	2034.5	23.9	CHT
93	1259.0	839.2	32.1	CHT
94	1797.5	2012.4	25.2	CHT
95	2261.6	1704.2	20.9	CHT
96	1578.9	2085.0	24.0	CHT
97	1780.9	1313.8	20.0	CHT
98	1956.8	1307.4	19.8	CHT
99	1528.7	1677.7	21.0	CHT
100	1901.6	1699.1	28.5	CHT
101	2340.9	1712.6	21.6	CHT
102	1666.2	1568.8	22.7	CHT
103	1579.2	1745.1	24.5	CHT
104	1620.9	1771.8	22.7	CHT
105	2076.5	977.9	32.6	CHT
106	1385.9	591.6	19.8	CHT
107	1878.0	1224.4	28.8	CHT
108	1708.7	1799.0	22.7	CHT
109	2790.2	2137.0	20.5	CHT
110	1510.2	1159.1	20.8	CHT
111	2181.8	1060.5	30.8	CHT
112	1367.0	673.5	19.8	CHT
113	2748.1	2228.0	24.9	CHT
114	2143.0	1583.6	39.3	CHT
115	1988.4	1311.2	17.9	CHT
116	1901.7	1543.7	29.0	CHT
117	1432.2	1193.7	20.1	CHT
118	1863.1	1625.2	22.6	CHT
119	1962.5	1430.2	23.6	CHT
120	2609.1	1909.6	24.6	CHT
121	1948.7	1195.6	38.5	CHT
122	1988.7	1360.4	17.6	CHT
123	2629.9	1983.5	22.7	CHT
124	2127.1	1676.4	24.2	CHT
125	1187.0	934.0	23.0	Gradient
126	1238.0	898.0	24.5	Gradient
127	1264.0	911.0	44.0	Gradient
128	1262.0	1014.0	21.0	Gradient
129	1404.0	1137.0	42.5	Gradient
130	1406.0	1013.0	27.5	Gradient
131	1407.0	534.0	26.5	Gradient
132	1455.0	1002.0	16.0	Gradient
133	1456.0	686.0	33.0	Gradient
134	1509.0	1623.0	40.0	Gradient
135	1528.0	1271.0	17.5	Gradient

(continued on next page)

Supplementary Table S1. (continued)

Number	CenterPosition_X_pixel	CenterPosition_Y_pixel	Radius_nm	Segmentation_Method
136	1540.0	1368.0	32.5	Gradient
137	1539.0	1654.0	20.0	Gradient
138	1563.0	1153.0	42.0	Gradient
139	1577.0	860.0	26.5	Gradient
140	1604.0	1214.0	21.0	Gradient
141	1596.0	916.0	28.5	Gradient
142	1630.0	1945.0	27.0	Gradient
143	1628.0	1142.0	24.0	Gradient
144	1653.0	1175.0	29.0	Gradient
145	1693.0	1789.0	22.0	Gradient
146	1693.0	1942.0	45.0	Gradient
147	1687.0	1722.0	35.5	Gradient
148	1730.0	1689.0	36.0	Gradient
149	1748.0	1880.0	45.0	Gradient
150	1748.0	1785.0	24.5	Gradient
151	1788.0	1858.0	26.5	Gradient
152	1822.0	1932.0	26.5	Gradient
153	1820.0	1268.0	25.5	Gradient
154	1835.0	1484.0	21.5	Gradient
155	1848.0	1961.0	15.5	Gradient
156	1851.0	1328.0	18.0	Gradient
157	1888.0	1047.0	42.0	Gradient
158	1882.0	1490.0	33.5	Gradient
159	1868.0	1625.0	20.5	Gradient
160	1868.0	1269.0	16.0	Gradient
161	1891.0	973.0	43.0	Gradient
162	1890.0	1675.0	18.5	Gradient
163	1905.0	1737.0	33.0	Gradient
164	1917.0	1160.0	40.5	Gradient
165	1924.0	1774.0	20.5	Gradient
166	1932.0	1572.0	15.5	Gradient
167	1942.0	1222.0	18.5	Gradient
168	1968.0	1330.0	38.0	Gradient
169	1948.0	1510.0	26.5	Gradient
170	1955.0	1974.0	17.0	Gradient
171	2031.0	1507.0	31.5	Gradient
172	1998.0	1747.0	45.0	Gradient
173	2014.0	1788.0	43.0	Gradient
174	2025.0	1434.0	37.0	Gradient
175	2070.0	1738.0	22.0	Gradient
176	2059.0	1776.0	18.5	Gradient
177	2187.0	1745.0	45.0	Gradient
178	2317.0	1978.0	17.5	Gradient
179	2528.0	2086.0	30.5	Gradient
180	2335.0	1774.0	18.0	Gradient

(continued on next page)

Supplementary Table S1. (continued)

Number	CenterPosition_X_pixel	CenterPosition_Y_pixel	Radius_nm	Segmentation_Method
181	2355.0	1831.0	45.0	Gradient
182	2449.0	1904.0	34.0	Gradient
183	2551.0	2215.0	17.5	Gradient
184	2611.0	1797.0	45.0	Gradient
185	2683.0	2142.0	33.0	Gradient
186	2707.0	2180.0	36.5	Gradient
187	2768.0	2107.0	17.0	Gradient
188	2750.0	2154.0	31.0	Gradient
189	1128.0	970.0	34.5	Entropy
190	1397.0	682.0	34.5	Entropy
191	1456.0	602.0	16.0	Entropy
192	1565.0	2048.0	16.0	Entropy
193	1567.0	1155.0	44.5	Entropy
194	1600.0	1511.0	21.5	Entropy
195	1775.0	1427.0	44.5	Entropy
196	1987.0	1010.0	20.5	Entropy
197	1841.0	1291.0	45.0	Entropy
198	1947.0	1505.0	29.0	Entropy
199	1993.0	1324.0	26.0	Entropy
200	2030.0	1503.0	34.0	Entropy
201	2061.0	1753.0	38.0	Entropy
202	2187.0	1745.0	45.0	Entropy
203	2357.0	1793.0	34.0	Entropy
204	2601.0	1702.0	28.0	Entropy